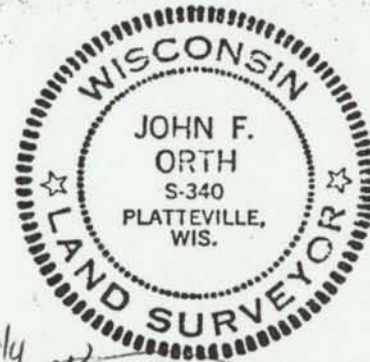
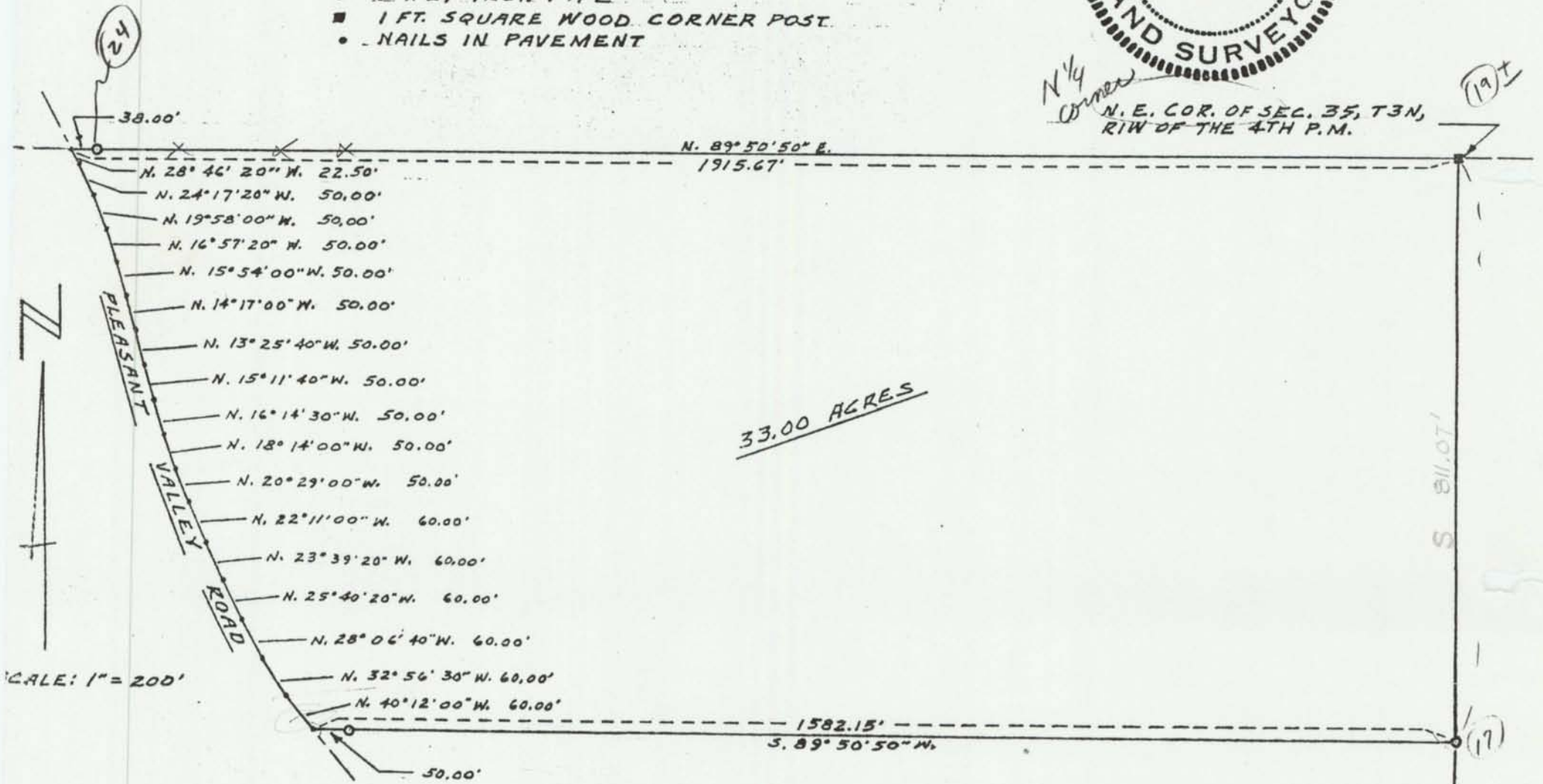


CHARLES BOGAERT FARM PROPERTY
 PLATTEVILLE TWP.
 GRANT COUNTY, WIS.
 10/29/82



- 1" x 24" IRON PIPE
- 1 FT. SQUARE WOOD CORNER POST
- NAILS IN PAVEMENT

N 1/4 corner
 N. E. COR. OF SEC. 35, T3N,
 R1W OF THE 4TH P.M.



NF85