

REC'D OCT 5 1995

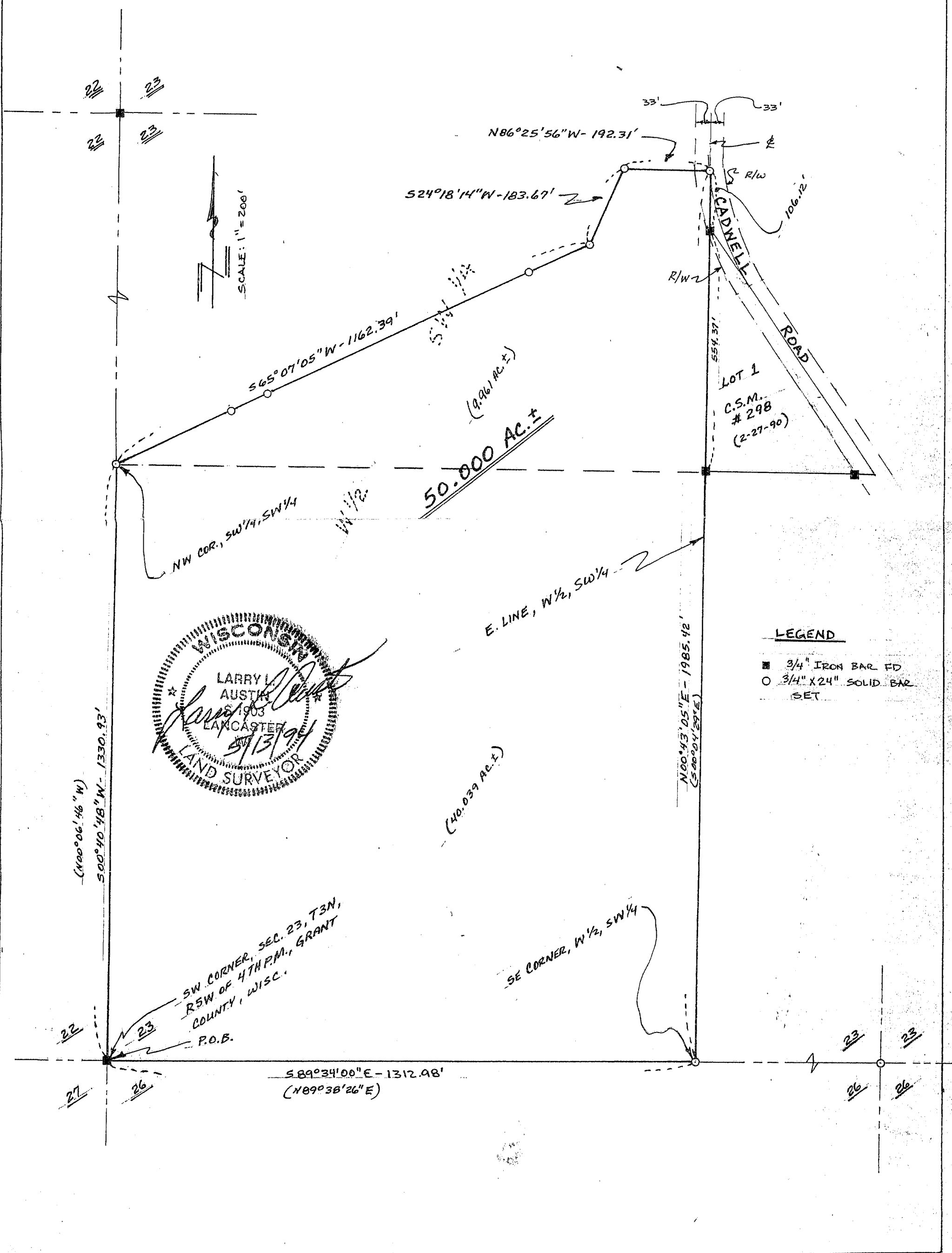
125

SHEET 2 OF 2

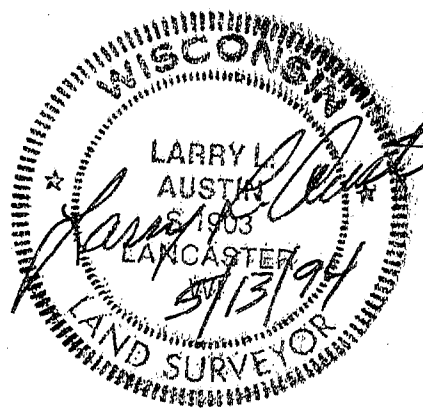
pg only rec'd

# SURVEY PLAT

JOYCE - BREUR  
DDYCFB 9506 PW7



SCALE: 1" = 200'



- LEGEND**
- 3/4" IRON BAR FD
  - 3/4" X 24" SOLID BAR SET

SW CORNER, SEC. 23, T3N,  
R5W OF 4TH P.M., GRANT  
COUNTY, WISC.  
P.O.B.

SE CORNER, W 1/2, SW 1/4

N00°43'05"E - 1985.42'  
(5000.4' E)

50.000 AC. ±

(9.96 AC. ±)

(40.039 AC. ±)

LOT 1  
C.S.M.  
# 298  
(2-27-90)

CADWELL ROAD

33'

R/W

R/W

106.12'

N86°25'56"W - 192.31'

S24°18'14"W - 183.67'

S65°07'05"W - 1162.39'

NW COR., SW 1/4, SW 1/4  
W 1/2

E. LINE, W 1/2, SW 1/4

(N00°06'46"W)  
500'40'48"W - 1330.93'

S89°34'00"E - 1312.98'  
(N89°38'26"E)