

RECEIVED  
GRANT COUNTY

DEC 2 1994

# BOSCABEL BLOCK CORNER REMONUMENTATION

BEING PART OF THE SE 1/4 OF THE SW 1/4 OF SECTION 26, T8N, R3W, CITY OF BOSCABEL, GRANT COUNTY, WISCONSIN.

### SURVEYOR'S NOTES:

- 1.) The east line of the SW 1/4 used for this survey is the line between the S 1/4 corner and occupied center of section 26. This line has been retraced back as early as 1947 by surveys by Homer Ralph. Numerous surveys on record are tied to this line. The N-S 1/4 line is slightly east of the occupied line and bears N 0°11'11" W, 5305.99' from the S 1/4 corner to the N 1/4 corner.
- 2.) The street east of block 3, Mortimer's Addition, is staked 66' west of the east line of the SW 1/4 in conformance with the City's Assessor plat. Mortimer's Addition indicated that the street was only 1/2 width or 33'.
- 3.) Assessor's plat lots 26, 27, 28 do not conform to east-west dimensions shown on the plat as occupied. The dimensions associated with the City's assessment records are different than the assessment plat for this area and more closely correspond to the actual occupation lines. Stakes were placed 33' west of the east line of the SW 1/4 as shown on the Assessor's plat to allow for the west half of the street.
- 4.) Seaton's Addition plat shows an unnamed street of unspecified width east of Block 2. The City Assessment plat shows an unspecified width between the west line of the SW 1/4 and the east line of block 2. The remaining width of same is shown on the plat and is occupied by the owners of lots 8 & 9, Block 2.

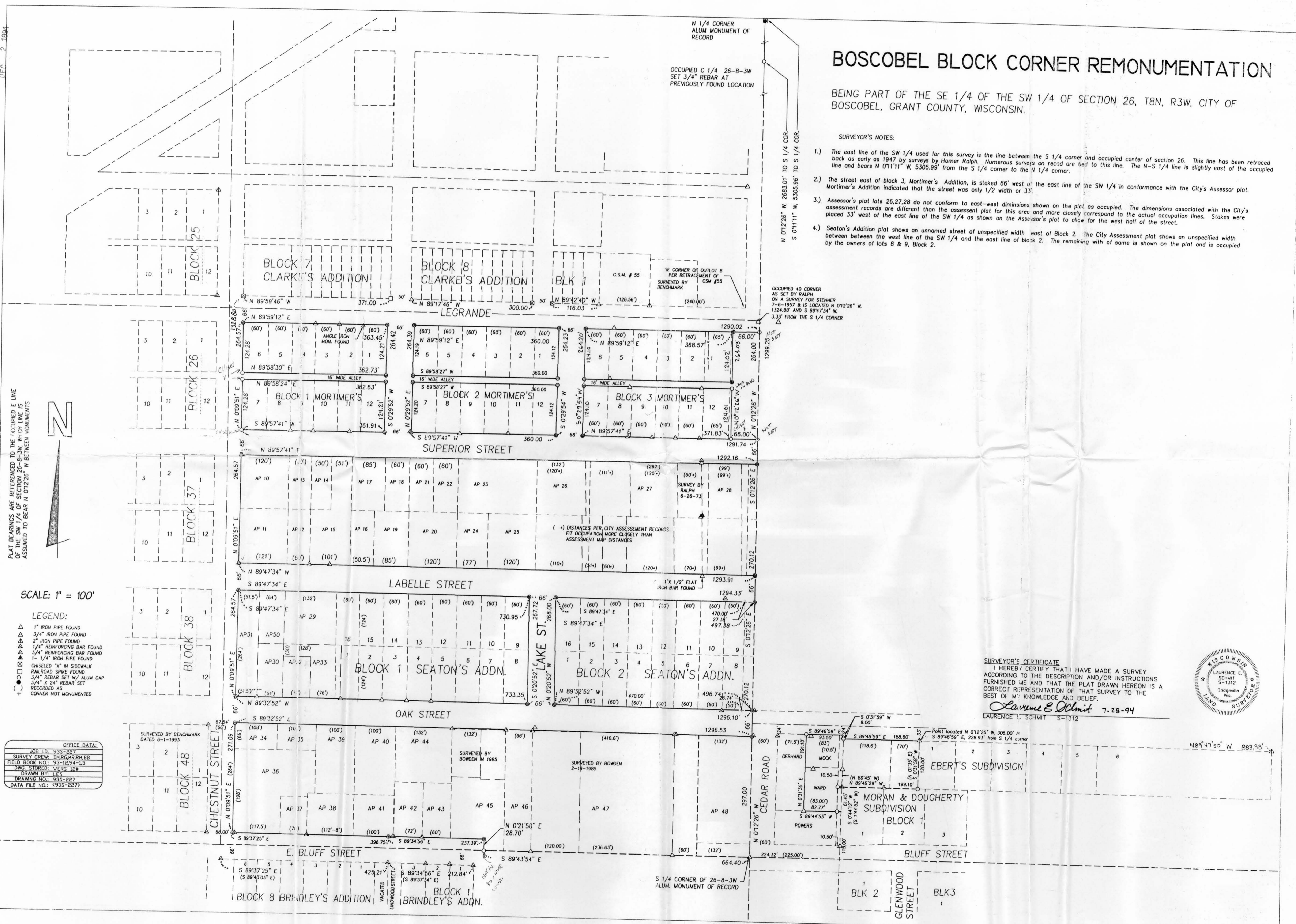
PLAT BEARINGS ARE REFERENCED TO THE OCCUPIED E LINE OF THE SW 1/4 OF SECTION 26. BEARING ON EACH LINE IS ASSUMED TO BEAR N 0°12'26" W BETWEEN MONUMENTS



SCALE: 1" = 100'

- LEGEND:**
- △ 1" IRON PIPE FOUND
  - △ 3/4" IRON PIPE FOUND
  - △ 2" IRON PIPE FOUND
  - △ 1/4" REINFORCING BAR FOUND
  - △ 3/4" REINFORCING BAR FOUND
  - △ 1- 1/4" IRON PIPE FOUND
  - CHISELED "X" IN SIDEWALK
  - RAILROAD SPIKE FOUND
  - 3/4" REBAR SET W/ ALUM. CAP
  - 3/4" X 24" REBAR SET
  - RECORDED AS
  - CORNER NOT MONUMENTED

OFFICE DATA:	
JOB NO.	935-227
SURVEY CREW:	DMR, MR, SM, BB
FIELD BOOK NO.:	93-1254-15
DWG. STORED:	VERS 12#
DRAWN BY:	LES
DRAWING NO.:	935-227
DATA FILE NO.:	935-227



**SURVEYOR'S CERTIFICATE**  
 I HEREBY CERTIFY THAT I HAVE MADE A SURVEY ACCORDING TO THE DESCRIPTION AND/OR INSTRUCTIONS FURNISHED ME AND THAT THE PLAT DRAWN HEREON IS A CORRECT REPRESENTATION OF THAT SURVEY TO THE BEST OF MY KNOWLEDGE AND BELIEF.

*Laurence E. Schmit* 7-28-94  
 LAURENCE E. SCHMIT S-1312

