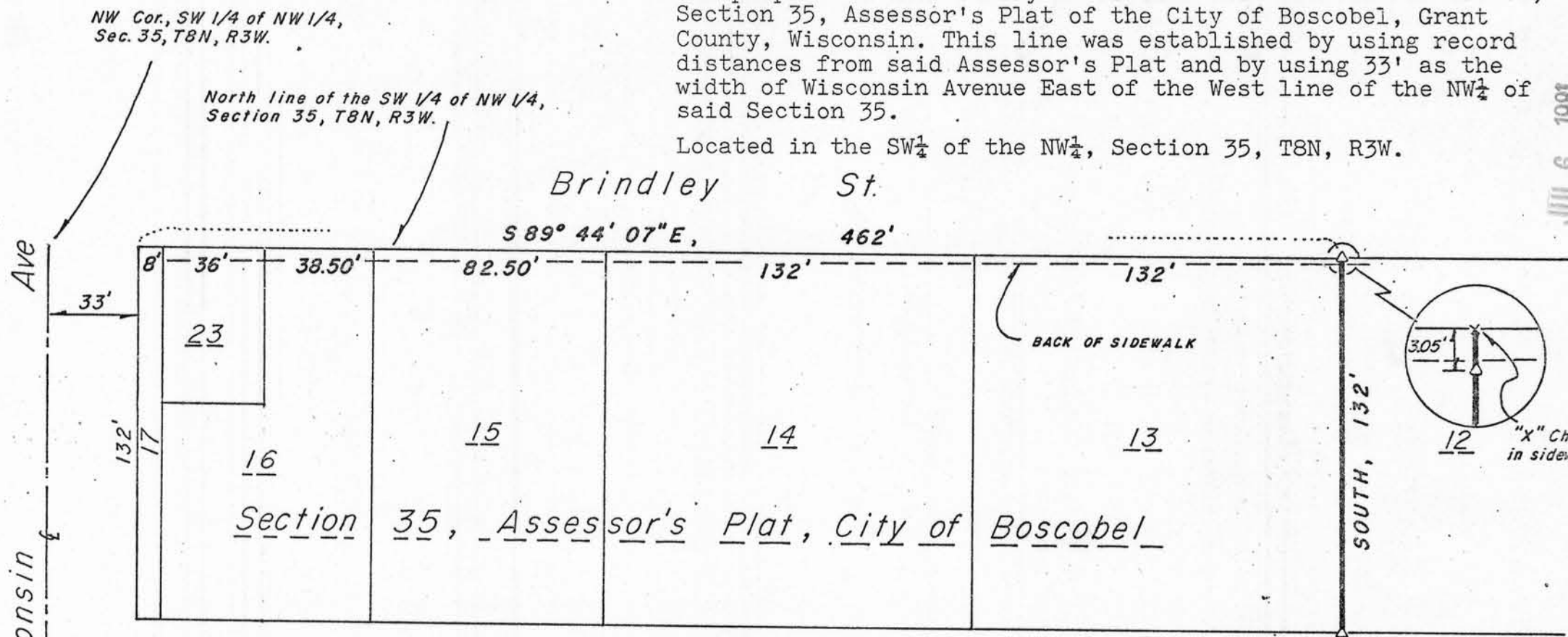


Sec. 35, T8N, R3W

81S-047

PLAT OF SURVEY

For: Joint School District No. 6  
of the City of Boscobel, etc.  
Boscobel, Wis.



The purpose of this survey is to mark the West line of Lot 12, Section 35, Assessor's Plat of the City of Boscobel, Grant County, Wisconsin. This line was established by using record distances from said Assessor's Plat and by using 33' as the width of Wisconsin Avenue East of the West line of the NW 1/4 of said Section 35.

Located in the SW 1/4 of the NW 1/4, Section 35, T8N, R3W.

Brindley St.

S 89° 44' 07" E, 462'

NW Cor., SW 1/4 of NW 1/4,  
Sec. 35, T8N, R3W.

North line of the SW 1/4 of NW 1/4,  
Section 35, T8N, R3W.

Ave

Wisconsin

33'

132'

8'

36'

38.50'

82.50'

132'

132'

17

16

15

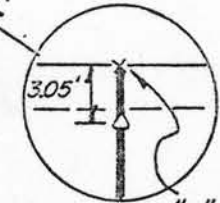
14

13

Section 35, Assessor's Plat, City of Boscobel

BACK OF SIDEWALK

SOUTH, 132'

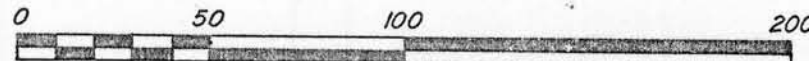


"X" Chiseled  
in sidewalk

West line of NW 1/4,  
Sec. 35, T8N, R3W

Legend

△ 3/4" Ø (No. 6) X 30" Long Rebar set  
Wt. = 1.502 lbs/lin. ft.



Scale - 1" = 50'

COPY

BEARINGS REFERENCED TO THE WEST  
LINE OF NW 1/4, SEC. 35, T8N, R3W.  
ASSUMED BRG. - NORTH



David A. Davis  
June 26, 1981

JUL 6 1981