



CERTIFIED LAND CORNER

STATE OF WISCONSIN )  
 COUNTY OF GRANT ) S.S.

CERTIFICATE

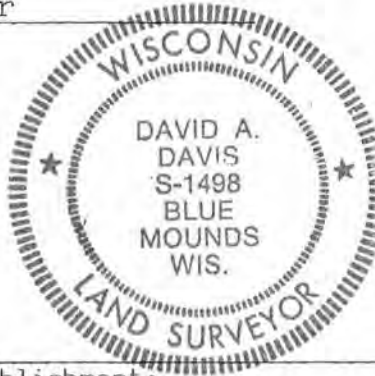
I, David A. Davis, do hereby certify that on the \_\_\_\_\_ day of December 1980, I found (evidence) ~~(xxxxxx)~~ of the Northeast corner of Section 21, T 3 N, R 3 W, Fourth Principal Meridian, and I re-established said corner according to the Wisconsin Statutes as shown and described hereon.

Dated this 22 day of September 1981

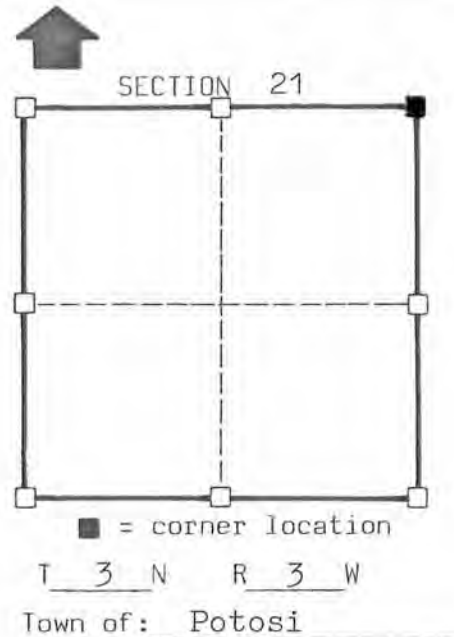
*David A. Davis*

Registered land surveyor  
 Title

**SOUTHWEST ENGINEERING, INC.**  
 206 S. Iowa Street  
 DODGEVILLE, WIS. 53533



Seal



History of original corner establishment:

1871 survey by Geo. McFall found original corner.

Description of corner evidence found:

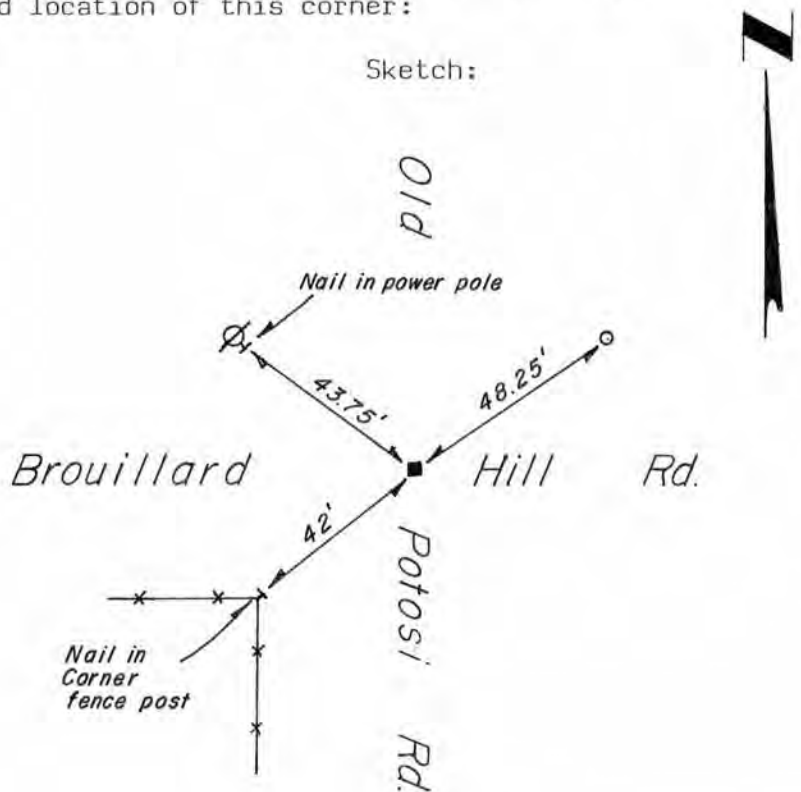
Accepted the travelled centerlines of Old Potosi Rd. & Brouillard Rd.  
 intersection of

Description of corner and witness monuments, references and accessories used to perpetuate the original or re-established location of this corner:

Witnesses to corner location:

\_\_\_\_\_  
 \_\_\_\_\_  
 \_\_\_\_\_  
 \_\_\_\_\_

Sketch:



Legend

- ⊘ Power pole
- \*-\*- Fenceline
- 2" ∅ Iron pipe set
- No. 10 (1-1/4" ∅) Rebar

SURVEY CONTROL ORDER

Horizontal
Vertical

WISCONSIN COORDINATE SYSTEM

Corner	East(X)	North(Y)	Elevation(Z)	Zone
Control Sta. Name				

CERTIFIED LAND CORNER

STATE OF WISCONSIN )  
 COUNTY OF GRANT ) S.S.

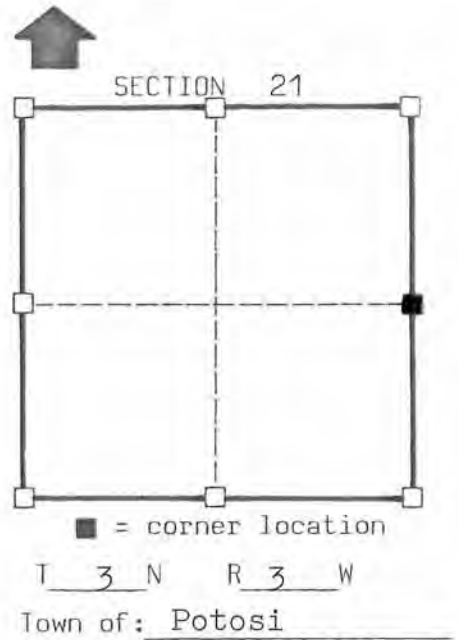
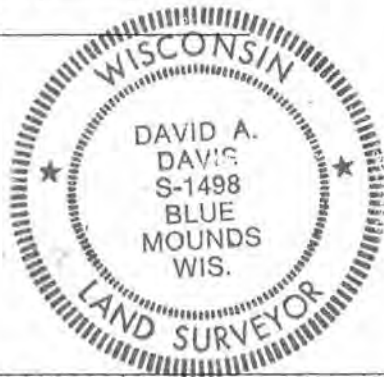
CERTIFICATE

I, David A. Davis, do hereby certify that on the \_\_\_\_\_ day of December 1980, I found (evidence) (~~no evidence~~) of the East  $\frac{1}{4}$  corner of Section 21, T 3N, R 3W, Fourth Principal Meridian, and I re-established said corner according to the Wisconsin Statutes as shown and described hereon.

Dated this 22 day of September 1981

David A. Davis  
 Registered land surveyor  
 Title

**SOUTHWEST ENGINEERING, INC.**  
 206 S. Iowa Street  
 DODGEVILLE, WIS. 53533



Seal

History of original corner establishment:

1881 survey by J. C. Scott - His bearing trees not found.  
 1871 survey by Geo. McFall found original corner.

Description of corner evidence found:

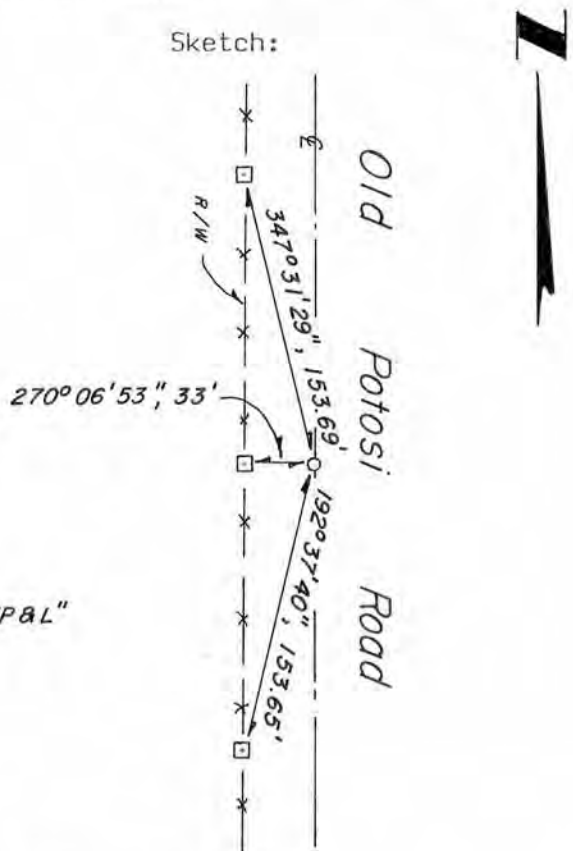
Accepted travelled centerline of Old Potosi Road at fences East & West.

Description of corner and witness monuments, references and accessories used to perpetuate the original or re-established location of this corner:

Witnesses to corner location:

\_\_\_\_\_  
 \_\_\_\_\_  
 \_\_\_\_\_  
 \_\_\_\_\_

Sketch:



Legend

- No. 6 (3/4" Ø) Rebar
- 3-3/4" Ø Aluminum Monument marked "WP&L"
- \*- Fenceline

SURVEY CONTROL ORDER

Horizontal
Vertical

WISCONSIN COORDINATE SYSTEM

Corner	East(X)	North(Y)	Elevation(Z)	Zone
Control Sta. Name				

CERTIFIED LAND CORNER

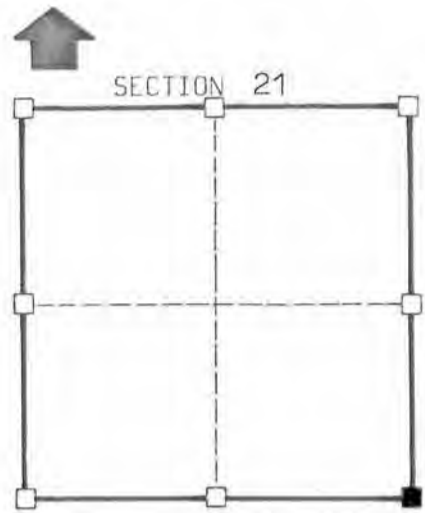
STATE OF WISCONSIN )  
 COUNTY OF GRANT ) S.S.

CERTIFICATE

I, David A. Davis, do hereby certify that on the \_\_\_\_\_ day of December 1980, I found (evidence) (~~no evidence~~) of the Southeast corner of Section 21, T 3N, R 3W, Fourth Principal Meridian, and I re-established said corner according to the Wisconsin Statutes as shown and described hereon.

Dated this 22 day of September 1981

David A. Davis  
 Registered land surveyor  
 Title

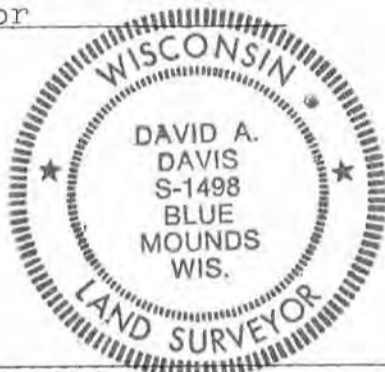


■ = corner location

T 3 N R 3 W

Town of: Potosi

**SOUTHWEST ENGINEERING, INC.**  
 206 S. Iowa Street  
 DODGEVILLE, WIS. 53533



Seal

History of original corner establishment:

3 - 1881 surveys by J. C. Scott - Bearing trees not found.

Accepted intersection of travelled centerlines of Old Potosi Rd. & See More Ridge Rd.

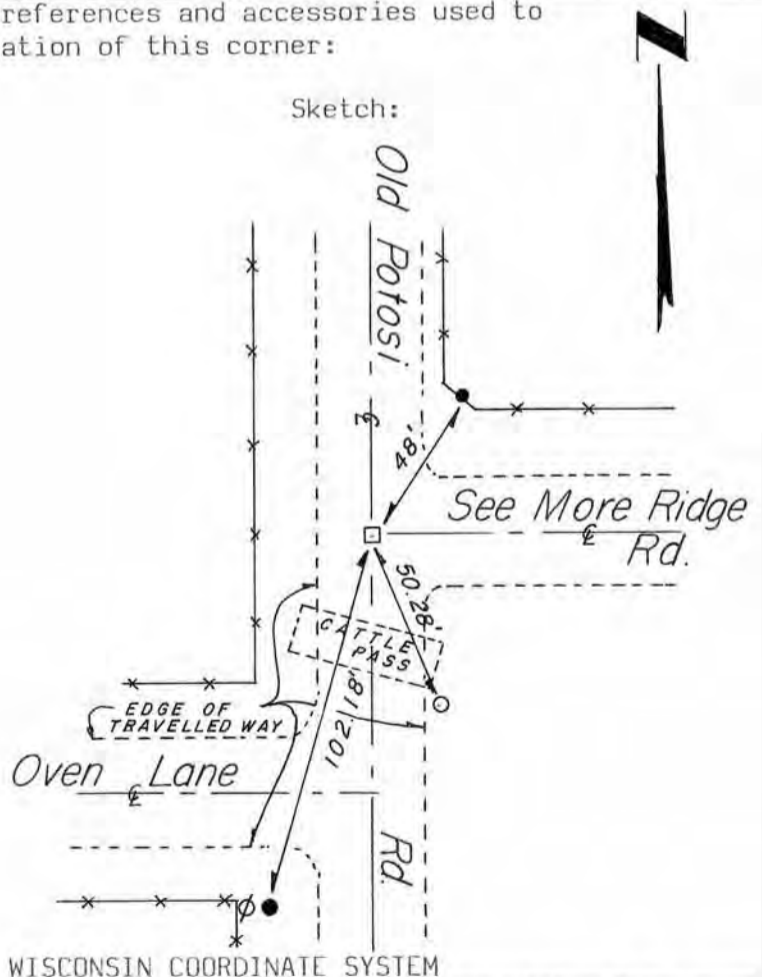
Description of corner evidence found:

Description of corner and witness monuments, references and accessories used to perpetuate the original or re-established location of this corner:

Witnesses to corner location:

\_\_\_\_\_  
 \_\_\_\_\_  
 \_\_\_\_\_  
 \_\_\_\_\_

Sketch:



Legend

- R.R. Spike
- 1" ∅ Iron pipe
- 1-1/2" Iron pipe
- ∅ Power pole
- \*-\* Fenceline

SURVEY CONTROL ORDER

Horizontal				
Vertical				
Corner	East(X)	North(Y)	Elevation(Z)	Zone
Control Sta. Name				