

Sec. 2, T2N, R2W

# VAN NATA KIELER SURVEY



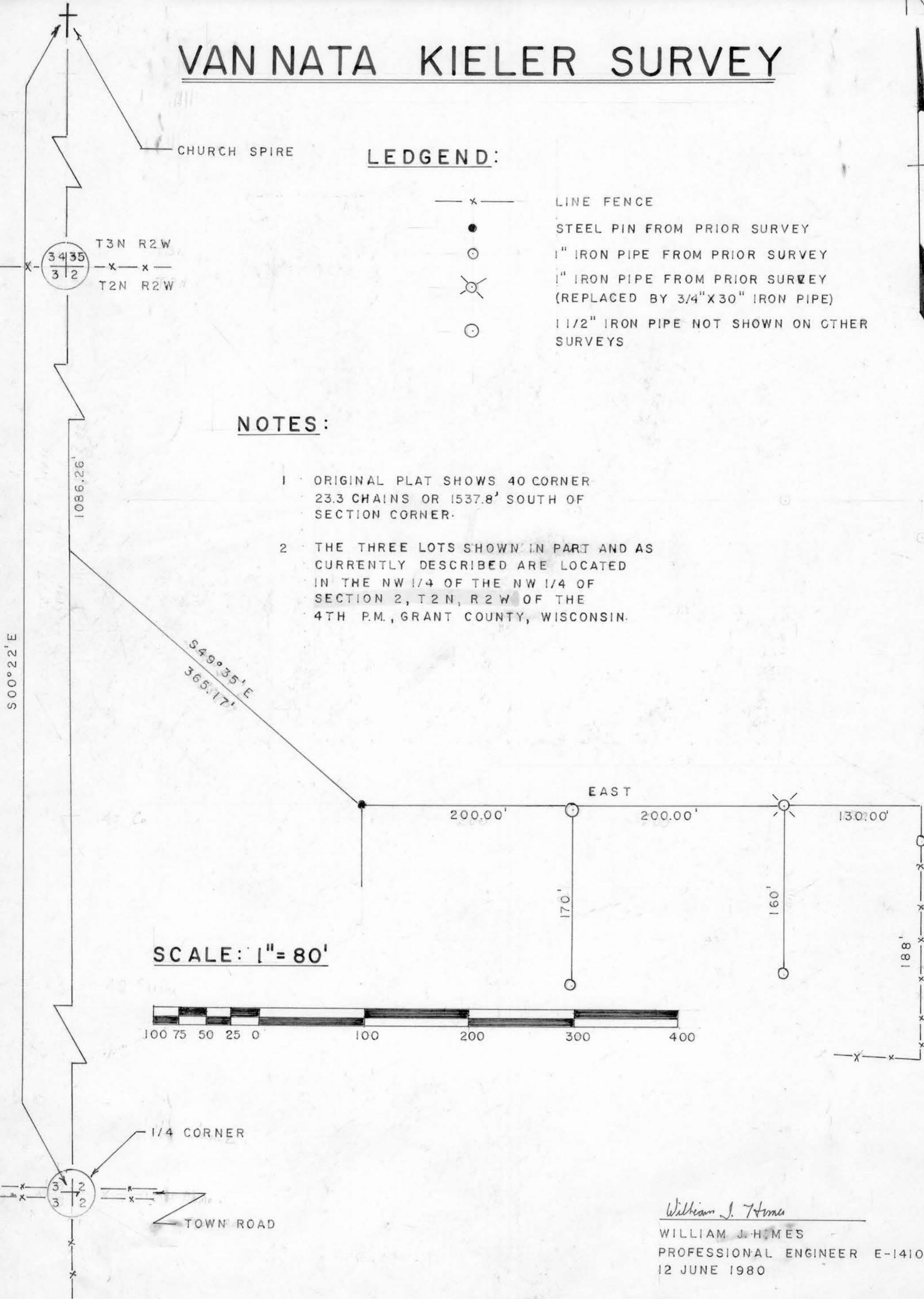
CHURCH SPIRE

## LEDGEND:

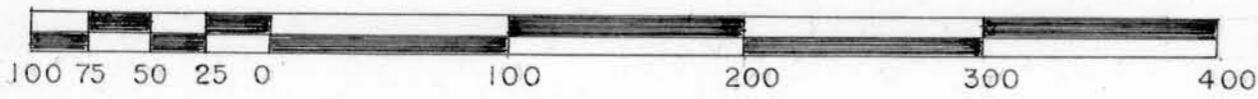
- x — LINE FENCE
- STEEL PIN FROM PRIOR SURVEY
- 1" IRON PIPE FROM PRIOR SURVEY
- ⊗ 1" IRON PIPE FROM PRIOR SURVEY (REPLACED BY 3/4" X 30" IRON PIPE)
- 1 1/2" IRON PIPE NOT SHOWN ON OTHER SURVEYS

## NOTES:

- 1 ORIGINAL PLAT SHOWS 40 CORNER 23.3 CHAINS OR 1537.8' SOUTH OF SECTION CORNER.
- 2 THE THREE LOTS SHOWN IN PART AND AS CURRENTLY DESCRIBED ARE LOCATED IN THE NW 1/4 OF THE NW 1/4 OF SECTION 2, T2N, R2W OF THE 4TH P.M., GRANT COUNTY, WISCONSIN.



SCALE: 1" = 80'



*William J. Himes*  
 WILLIAM J. HIMES  
 PROFESSIONAL ENGINEER E-14107  
 12 JUNE 1980