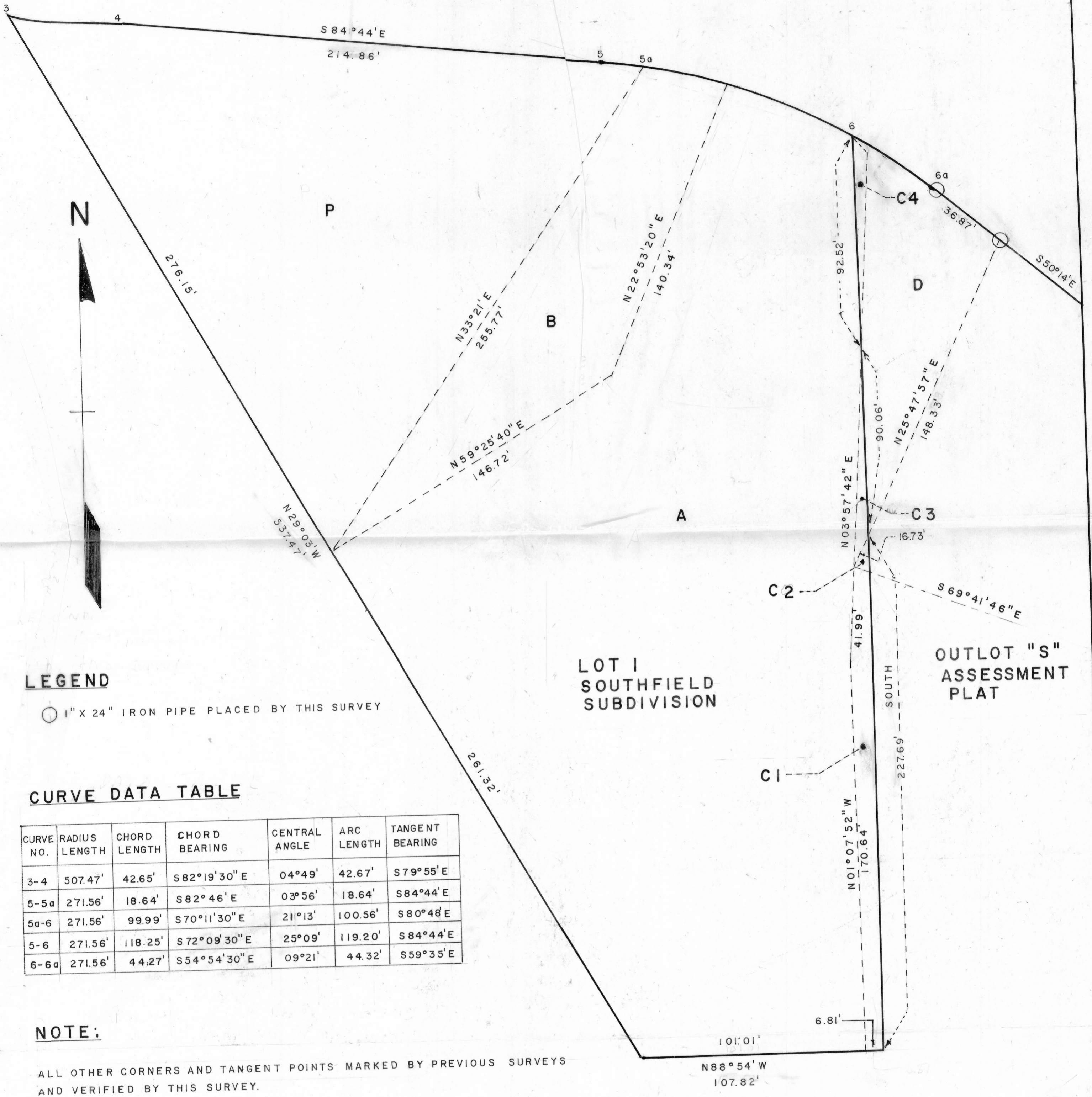


# KRUSE SURVEY

LANCASTER, WIS



## LEGEND

○ 1" X 24" IRON PIPE PLACED BY THIS SURVEY

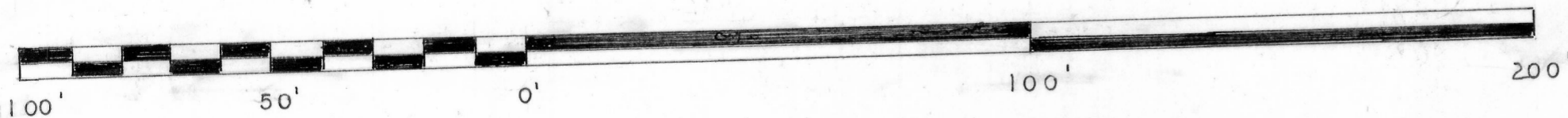
## CURVE DATA TABLE

CURVE NO.	RADIUS LENGTH	CHORD LENGTH	CHORD BEARING	CENTRAL ANGLE	ARC LENGTH	TANGENT BEARING
3-4	507.47'	42.65'	S82°19'30"E	04°49'	42.67'	S79°55'E
5-5a	271.56'	18.64'	S82°46'E	03°56'	18.64'	S84°44'E
5a-6	271.56'	99.99'	S70°11'30"E	21°13'	100.56'	S80°48'E
5-6	271.56'	118.25'	S72°09'30"E	25°09'	119.20'	S84°44'E
6-6a	271.56'	44.27'	S54°54'30"E	09°21'	44.32'	S59°35'E

## NOTE:

ALL OTHER CORNERS AND TANGENT POINTS MARKED BY PREVIOUS SURVEYS AND VERIFIED BY THIS SURVEY.

SCALE: 1" = 30'



*William J. Himes*  
WILLIAM J. HIMES

PROFESSIONAL ENGINEER E-14107  
OCTOBER 1979

