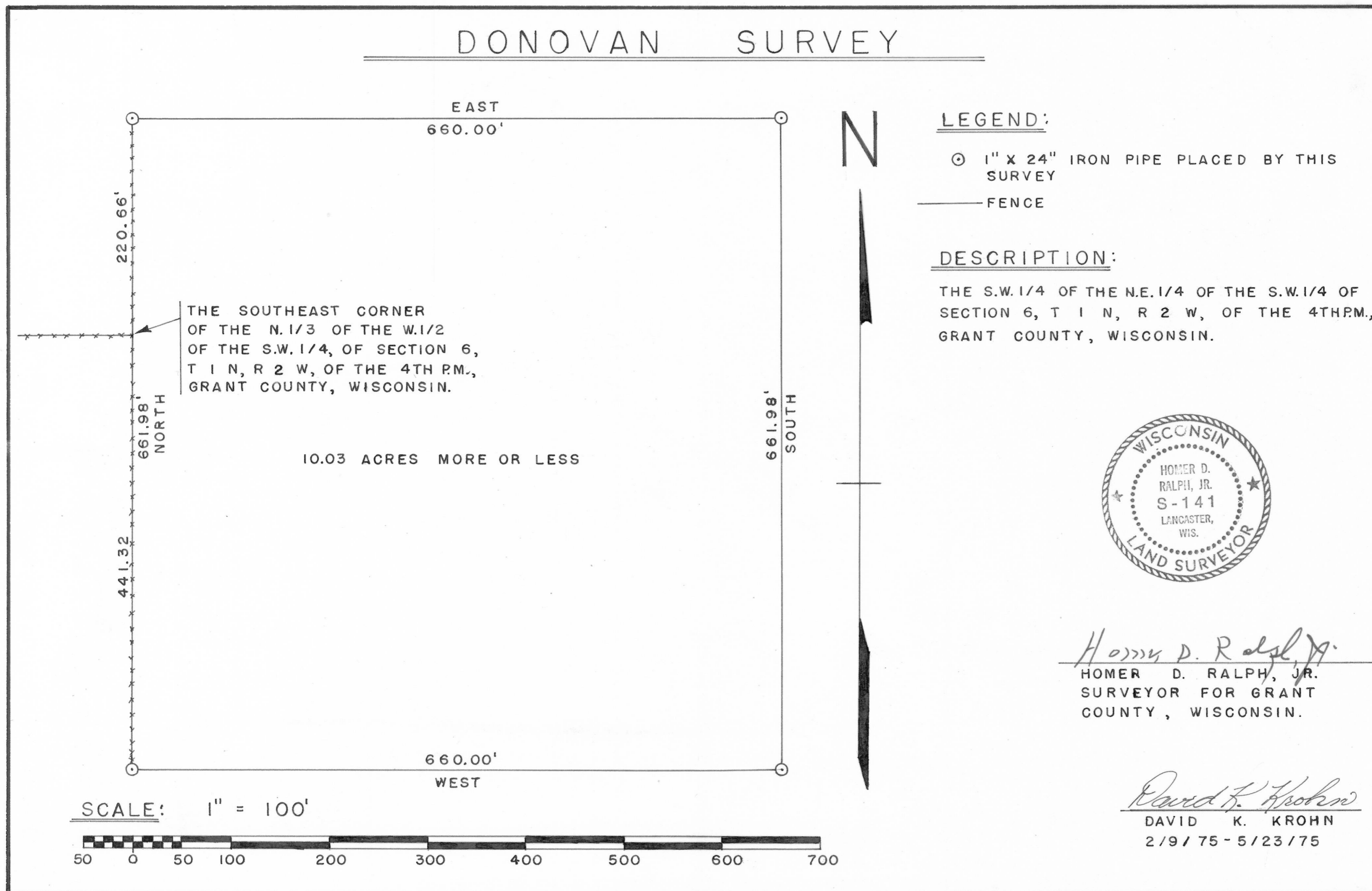


# DONOVAN SURVEY



THE SOUTHEAST CORNER  
OF THE N. 1/3 OF THE W. 1/2  
OF THE S.W. 1/4, OF SECTION 6,  
T 1 N, R 2 W, OF THE 4TH P.M.,  
GRANT COUNTY, WISCONSIN.

10.03 ACRES MORE OR LESS

SCALE: 1" = 100'

