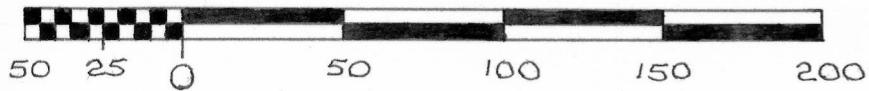


**PRELIMINARY PLAT**

A PART OF LOT 1, AND A PART OF LOT 2, BLOCK 14, OF THE ASSESSMENT PLAT TO THE CITY OF PLATTEVILLE, GRANT CO., WIS., ALSO, THE EAST 91.00 FEET OF LOTS 9, 10, 11, 12, 13, AND 14, BLOCK H, OF BAYLEY'S SUBDIVISION, CITY OF PLATTEVILLE, GRANT CO., WISCONSIN.

SCALE: 1" = 60'



**DESCRIPTION:**

A PART OF THE N.E. 1/4 OF THE N.E. 1/4 OF SECTION 15, T 3 N, R 1 W, OF THE 4TH RM., GRANT COUNTY, WISCONSIN, DESCRIBED AS FOLLOWS TO-WIT: COMMENCE AT THE NORTHEAST CORNER OF SAID SECTION 15; THENCE SOUTH 230.00 FEET TO THE POINT OF BEGINNING; THENCE SOUTH 273.58 FEET; THENCE WEST 263.92 FEET; THENCE NORTH 273.58 FEET; THENCE EAST 263.92 FEET TO THE POINT OF BEGINNING. CONTAINING 1.66 ACRES MORE OR LESS.

THE ABOVE DESCRIBED PARCEL OF LAND BEING A PART OF LOT 1, AND A PART OF 2, BLOCK 14, OF THE ASSESSMENT PLAT, AND A PART OF LOTS 9, 10, 11, 12, 13, AND 14, BLOCK H, OF BAYLEY'S SUBDIVISION, ALL IN THE CITY OF PLATTEVILLE, GRANT COUNTY, WISCONSIN, ACCORDING TO THE RECORDED MAPS OR PLATS THEREOF.

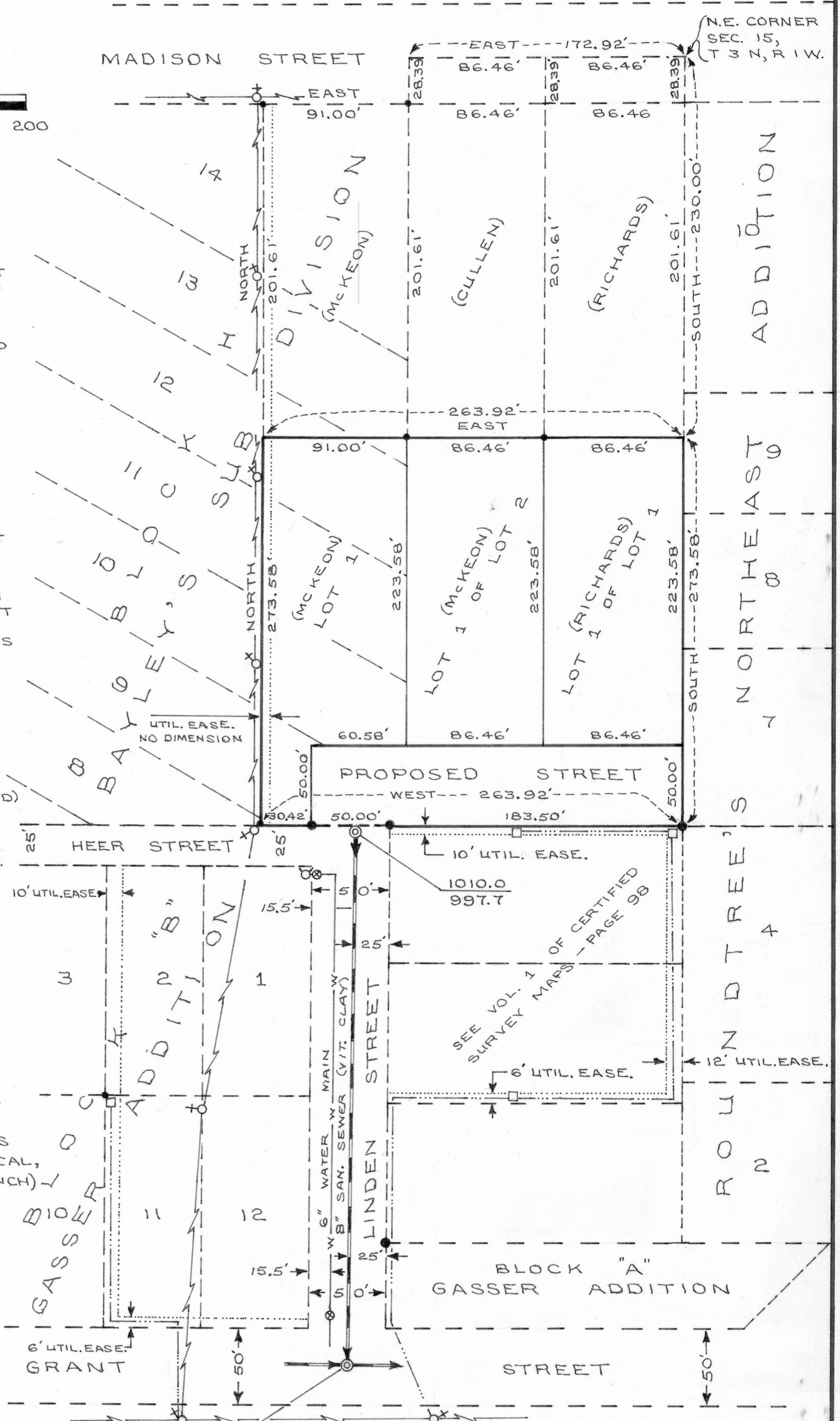
**LEGEND:**

- UTILITY POST (UNDERGROUND)
- ⊗ UTILITY POLE
- ⊙ 1010.0 RIM ELEV. 997.7 MANHOLE INVERT ELEV.
- ⊕ HYDRANT
- ⊗ WATER VALVE
- W — WATER MAIN
- ..... UTILITY EASEMENT
- SANITARY SEWER
- ⚡ OVERHEAD UTILITIES
- 1" x 24" IRON PIPE PLACED BY A PREVIOUS SURVEY
- 2" x 30" IRON PIPE PLACED BY A PREVIOUS SURVEY
- ..... UNDERGROUND UTILITIES (TELEPHONE, T.V., ELECTRICAL, ARE ALL IN THE SAME TRENCH)



*David K. Krohn*

DAVID K. KROHN  
REG. NO. 1309  
2/21/77 - 2/24/77



**NOTE:** LINDEN STREET HAS A 26' FOOT WIDE BITUMINOUS SURFACE. THERE IS NO CURB AND GUTTER ON LINDEN STREET.