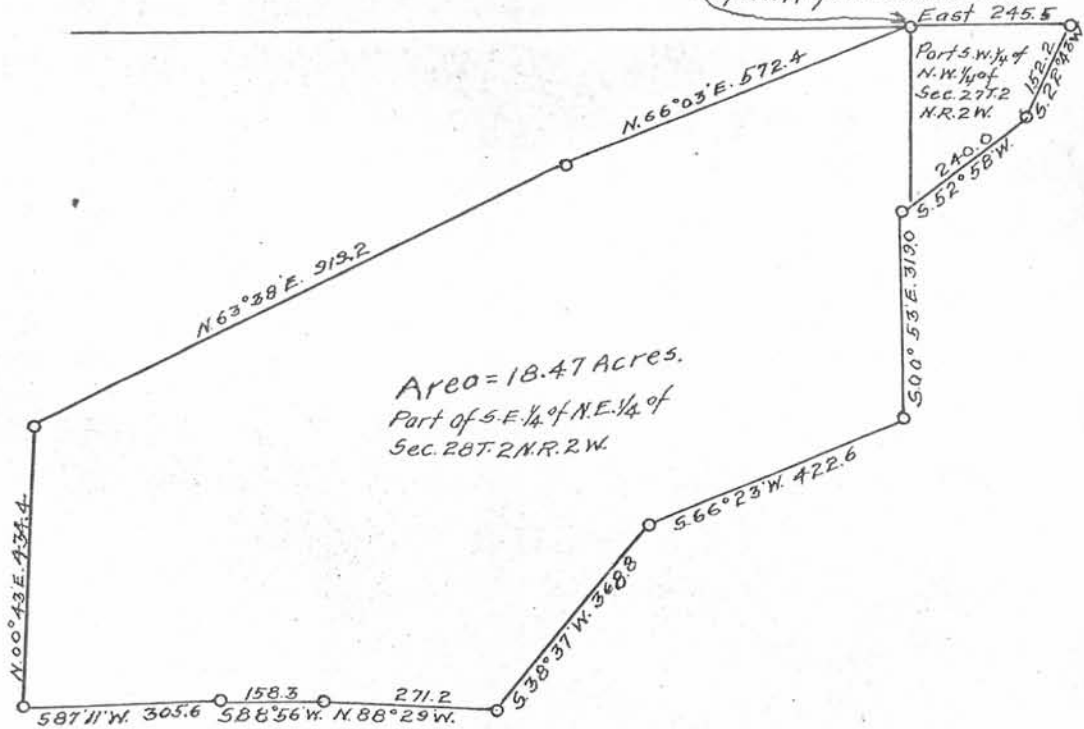


Surveyed Oct. 1, 1947.
 George Ginter.
 Leo Pitzer.
 John T. Buser
 County Surveyor.

OFFICE OF
JOHN T. BUSER
 GRANT COUNTY SURVEYOR

PLATTEVILLE, WIS.

Gas Pipe 3 in by 6 ft in length at S.W. Cor. of Village of Dickeyville - Being S.W. Cor. of N.W. 1/4 of N.W. 1/4 of Sec. 27 T. 2 N. R. 2 W.



Area = 18.47 Acres.
 Part of S.E. 1/4 of N.E. 1/4 of
 Sec. 28 T. 2 N. R. 2 W.

Part of the South West Quarter (S.W. 1/4) of the North West Quarter (N.W. 1/4) of Section Twenty-seven (27) and a part of the South East Quarter (S.E. 1/4) of the North East Quarter (N.E. 1/4) of Section Twenty-eight (28) all in Town Two (2) North Range Two (2) West of the 4th P.M. Grant County, Wisconsin, described as follows, to-wit:- Commence at the South West corner of the North West Quarter (N.W. 1/4) of the North West Quarter (N.W. 1/4) of said Section Twenty-seven (27), thence running East 245.5 feet, thence S. 22° 23' W. 152.2 feet, thence S. 52° 58' W. 240.0 feet, thence S. 00° 53' E. 319.0 feet, thence S. 66° 23' W. 422.6 feet, thence S. 38° 37' W. 368.8 feet, thence N. 88° 29' W. 271.2 feet, thence S. 88° 56' W. 158.3 feet, thence S. 87° 11' W. 305.6 feet, thence N. 00° 43' E. 434.4 feet, thence N. 63° 38' E. 919.2 feet, thence N. 66° 03' E. 572.4 feet to the place of beginning containing 18.47 acres, more or less.