

# Dixon and Orth

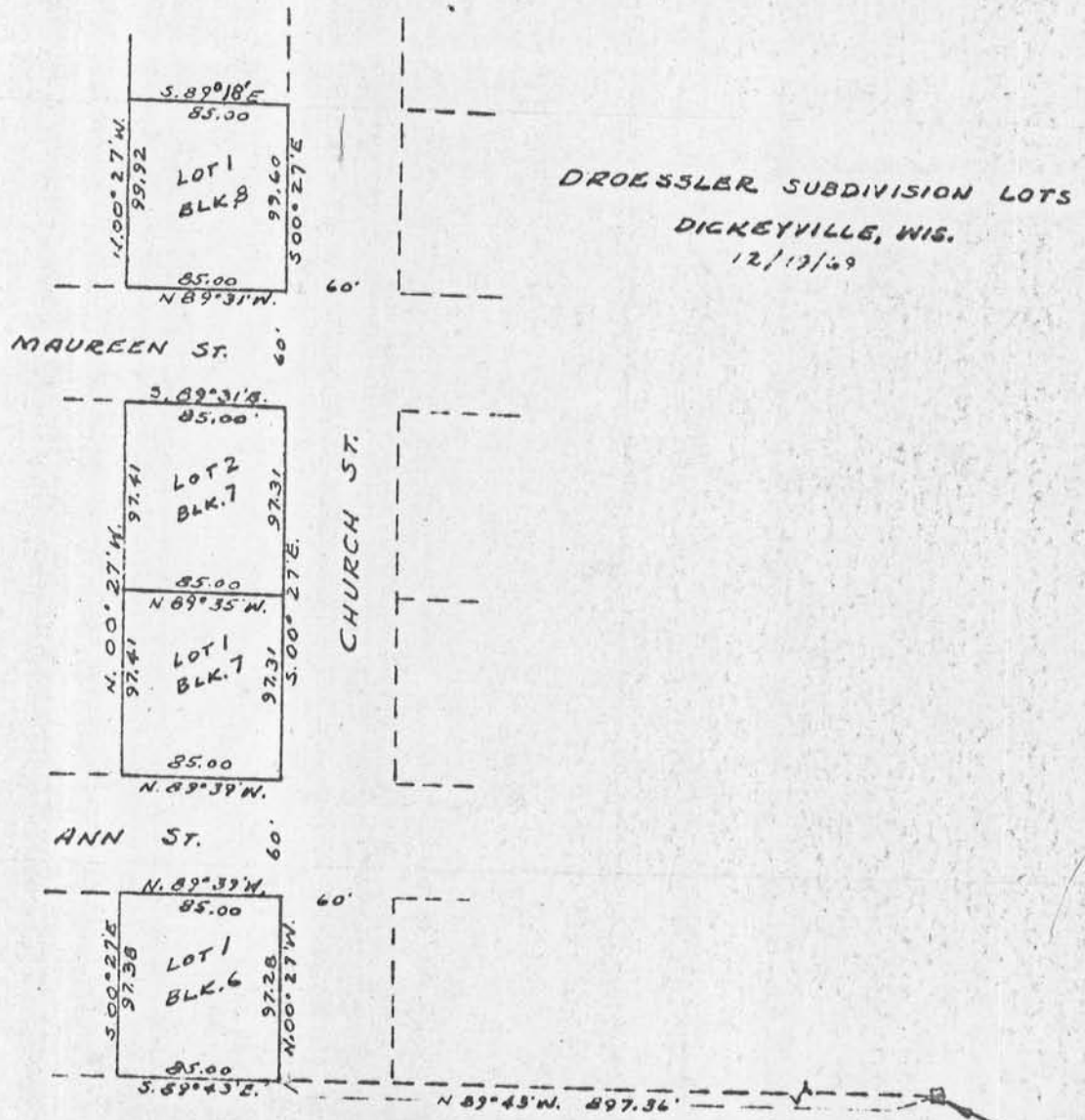
Registered Engineers and Surveyors  
 PLATTEVILLE, WIS. 53818

DALE DIXON  
 155 Preston Drive  
 Telephone 348-6408

JOHN ORTH  
 65 Elmer Street  
 Telephone 348-5731



SCALE: 1" = 100'



DROESSLER SUBDIVISION LOTS  
 DICKEYVILLE, WIS.  
 12/17/69

S. E. COR. OF S.W. 1/4 OF SEC. 22,  
 T2N, R2W OF 4TH P.M.