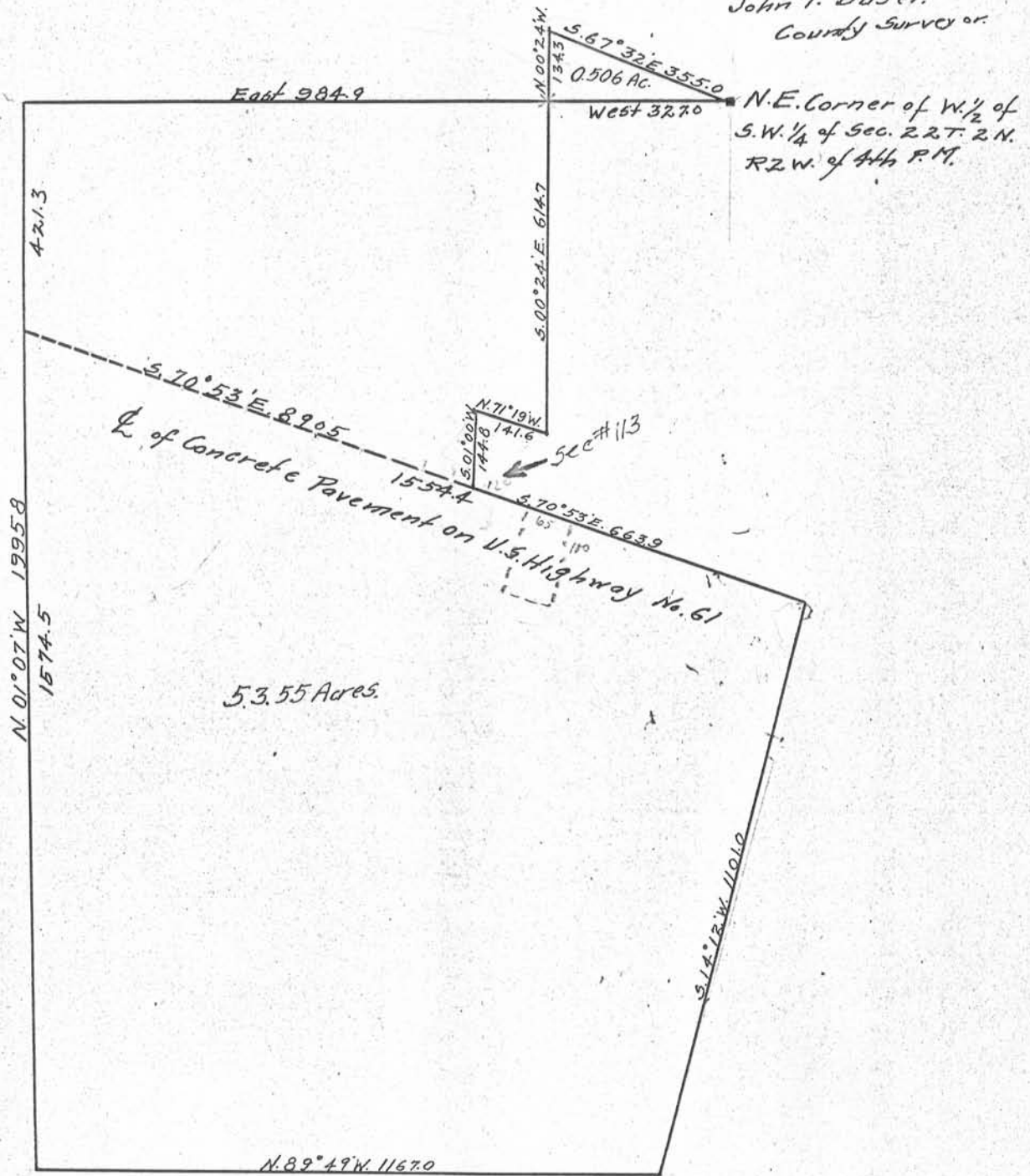


Surveyed Oct. 15-1938
 Roy W. Cushman
 John T. Buser.
 County Surveyor.



Plat of Survey made for the Frank Wallenhorst Estate of part of the N.W. 1/4 of S.W. 1/4 ; N. 1/2 of S.W. 1/4 of S.W. 1/4, a small part of N.E. 1/4 of S.W. 1/4 and a small triangular tract in the S.E. Corner of the S.W. 1/4 of the N.W. 1/4 all in Sec. 22 T. 2 N. R. 2 West.
 The balance of the land described in the Caption of this Abstract is not shown on the plat.