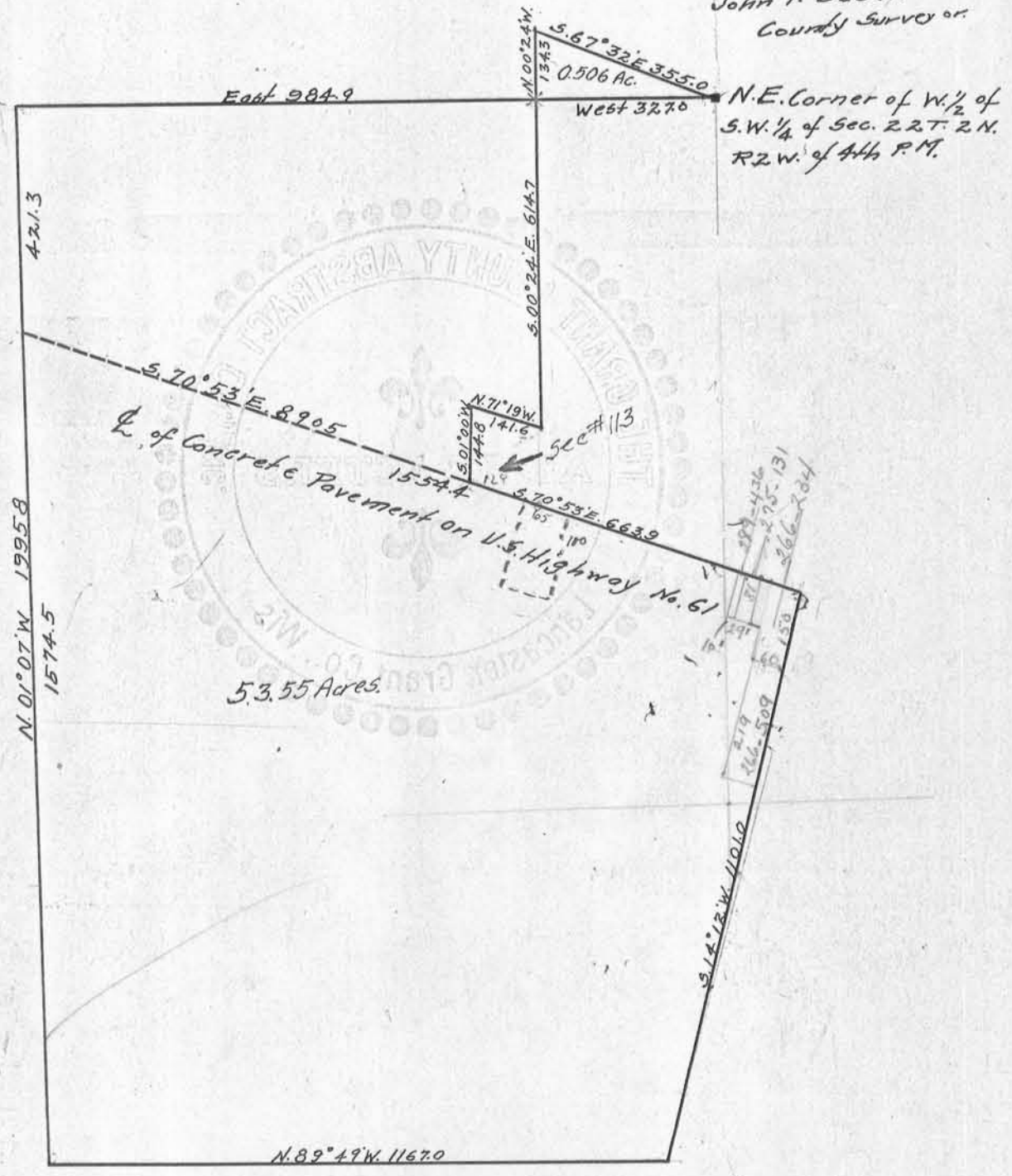


30 scale

Surveyed Oct. 15-1938  
Roy W. Cushman  
John T. Buser,  
County Surveyor



Plat of Survey made for the Frank Wallenhorst Estate of part of the N.W. 1/4 of S.W. 1/4 ; N. 1/2 of S.W. 1/4 of S.W. 1/4, a small part of N.E. 1/4 of S.W. 1/4 and a small triangular tract in the S.E. Corner of the S.W. 1/4 of the N.W. 1/4 all in Sec. 22 T. 2 N. R. 2 West. The balance of the land described in the Caption of this Abstract is not shown on the plat.