

JOHN T. BUSER.

Civil Engineer



PLATTEVILLE, WIS.

Surveyed May 1-1934

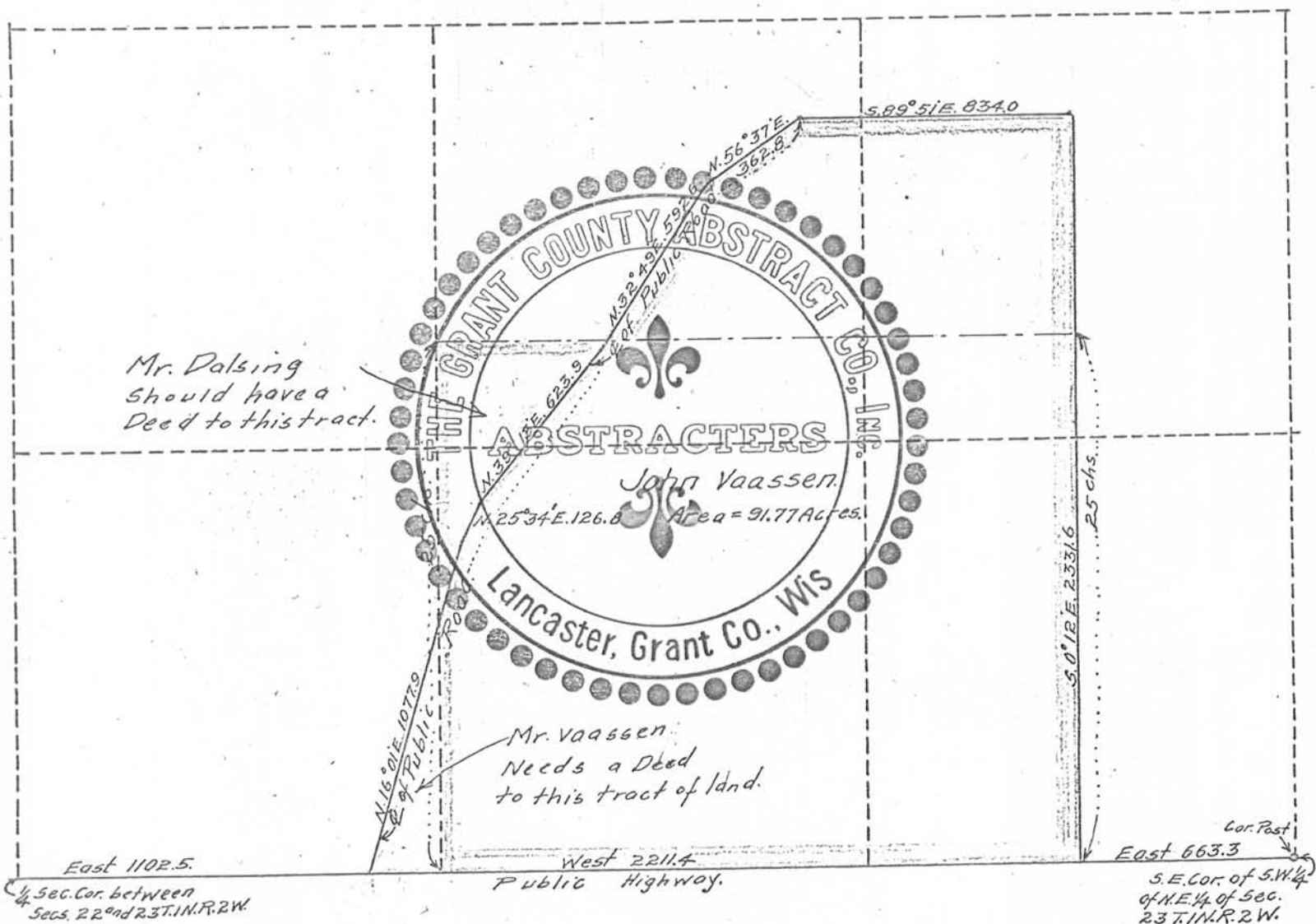
John Vaassen.

Joseph Vaassen

John T. Buser

County Surveyor.

Survey made for Mr. John Vaassen - In Section 23 T.1 N.R.2 W. of 4th P.M.



I, John T. Buser, County Surveyor of Grant County, Wisconsin hereby certify that the above plat is a correct representation of a survey made for Mr. John Vaassen on the 1st of May, 1934.

The land owned by Mr. Vaassen is shown surrounded by a Red line. The land shown by a Blue line is the land owned by Mr. Vaassen according to the Abstract of Title, which is incorrect as the land actually owned is the land shown by a Red line.

*John T. Buser, Co. Surveyor*