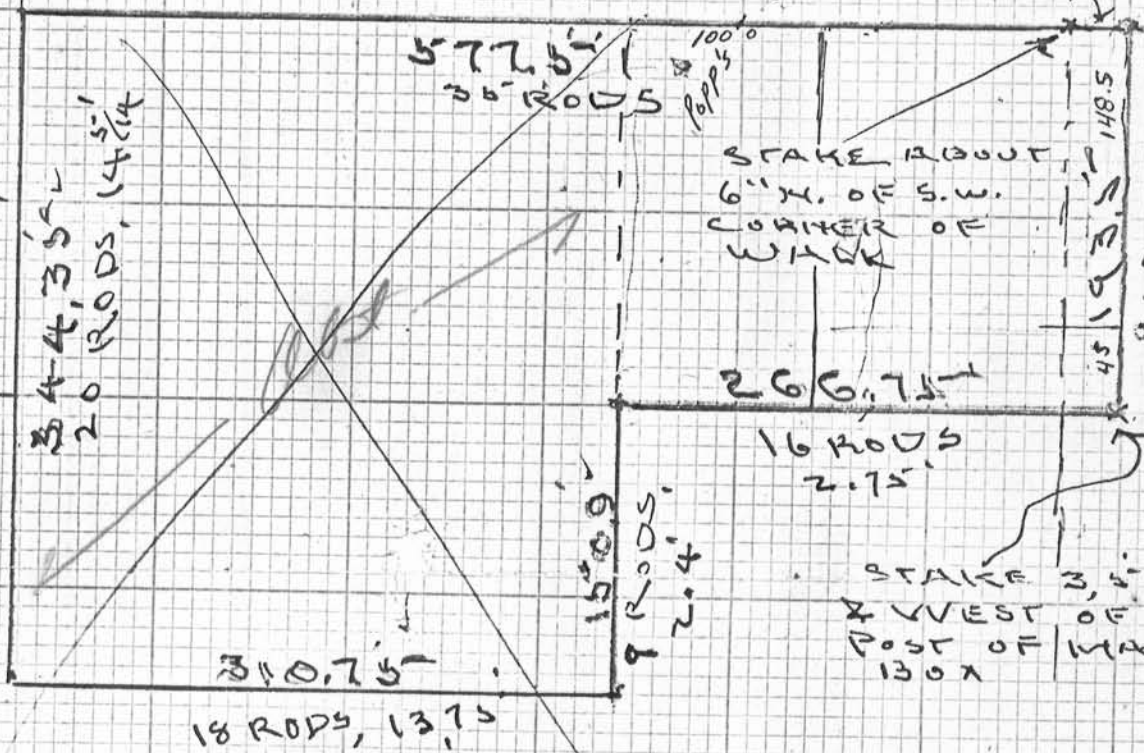
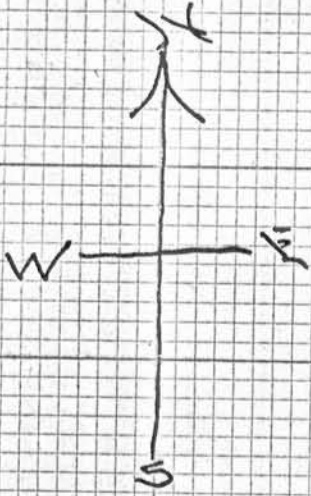


N.E. CORNER? SECT 28  
 T. 2. N. R. 1. W.  
 4TH P.M.



31.2' TO  
 W. SIDE WALK

STAKE ABOUT  
 6" N. OF S.W.  
 CORNER OF  
 WALK

STAKE 3.5' South  
 & WEST OF S.  
 POST OF MAIL  
 130x



URGENT A. HORNBECK LOT  
 GEORGETOWN, WIS.  
 MAY 11, 1957

By *E. E. Clarke*  
 Platteville, Wis.