

Range 1 West of the 4th P.M.

EDWARD SNYDER
CERTIFIED SURVEY MAP

The South line of Section 22, Township 1 North, Range 1 West of the Fourth Principal Meridian, Grant County, Wisconsin.

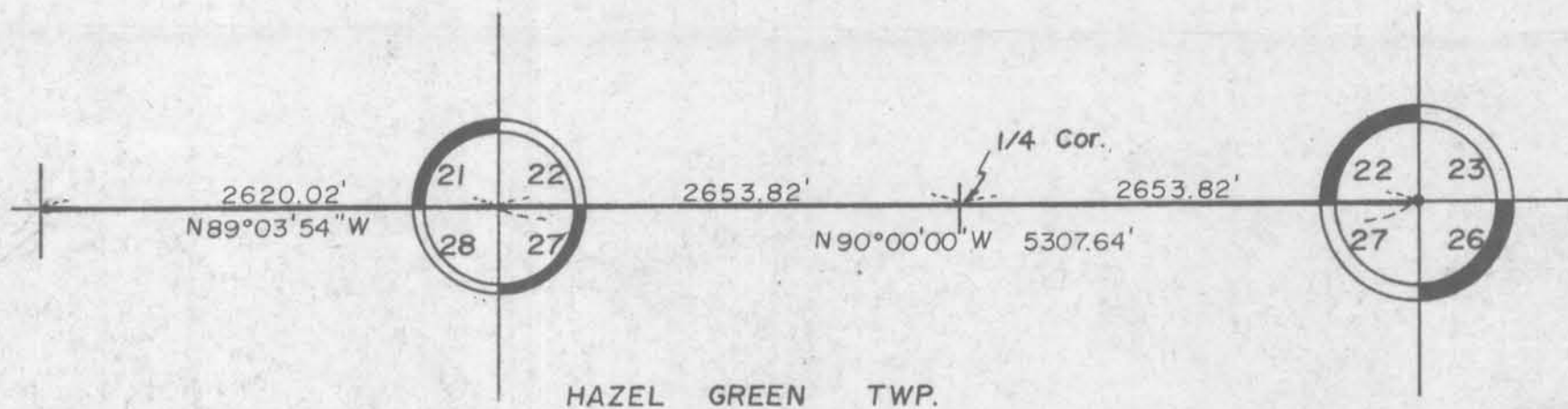
I HEREBY CERTIFY that this Map was caused to be surveyed by Edward Snyder, and the above Description and this Map are correct and in accordance with a survey made by me, or under my direct personal supervision on July 3, 5, 11, 1978. I further certify that I have fully complied with the requirements of s. 236.34 of the Wisconsin Statutes.

August 10, 1978

Carl B. Schoenhard, Jr.
Carl B. Schoenhard, Jr. R.L.S.
Wisconsin License #S-1298



Township 1 North



LEGEND

———— Boundary of Property Surveyed

● Existing PK Nail in Blacktop

| | | | | | |
|---|-----------------------------------|-----------------------------|------------------------|---------------|--|
| GALENA, ILL. | | SCHOENHARD DIVISION | | DUBUQUE, IOWA | |
| BERT B. HANSON AND ASSOCIATES Consulting Engineers — Land Surveyors Civil - Structural - Sanitary - Highway - Electrical | | | | | |
| DRAWN BY REK | DATE DRAWN Aug. 2, 1978 | SCALE 1" = 1,000' | REVISIONS | | |
| CHECKED BY CBS | APPROVED BY CBS | FIELD BK. 2-J-78 | DATE | BY | |
| SURVEYED BY CBS, DLL, RB, WK | | | | | |
| DATE July 3, 5, 11, 1978 | | | | | |
| TITLE Edward Snyder | | | NO. 80-WI-78 | | |