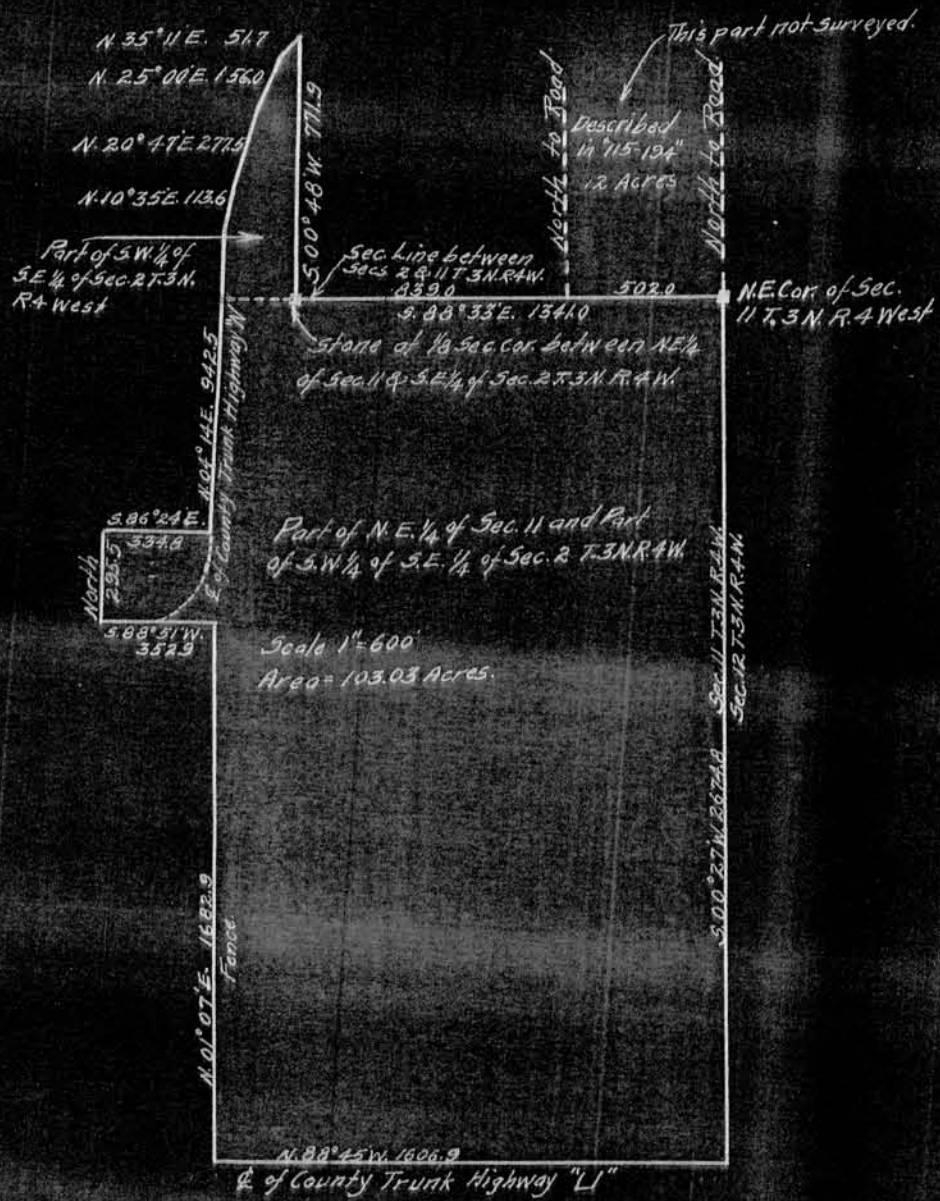


Surveyed Nov. 3 & 11-1938

John Albee
Fay Raschi
Rudolph Turtcher
John T. Buser
County Surveyor.



Plat of survey of part of S.W. 1/4 of S.E. 1/4 of Sec. 2 and part of N.E. 1/4 of Sec. 11 T.3 N. R.4 West, showing the location of the land Abstracted.