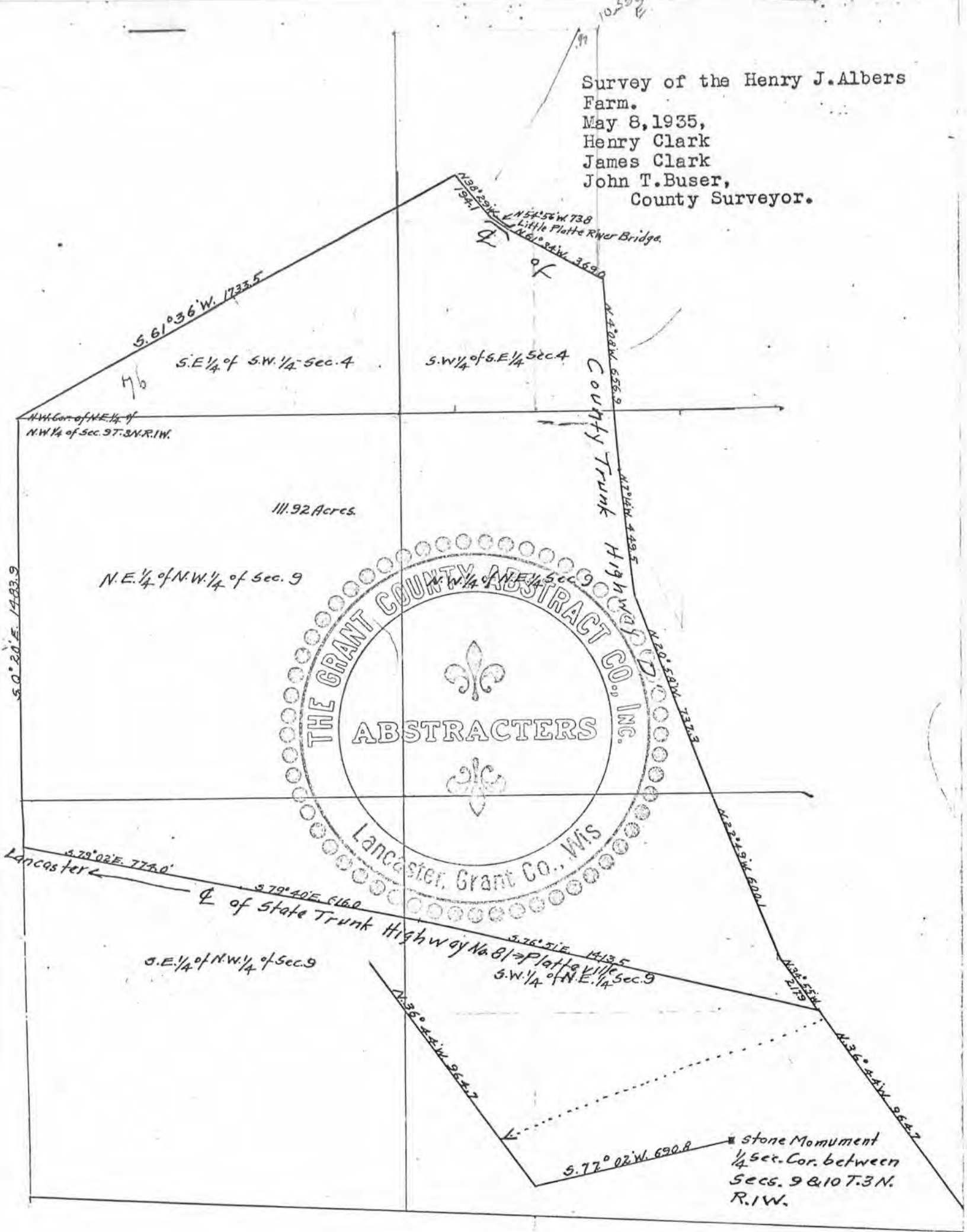


Survey of the Henry J. Albers Farm.  
 May 8, 1935,  
 Henry Clark  
 James Clark  
 John T. Buser,  
 County Surveyor.



JOHN T. BUSER  
Civil Engineer

Survey May 8-1935  
Henry Clark  
James Clark  
John T. Buser  
County Surveyor.

PLATTEVILLE, WIS.

N. 38° 29' W. 194.1  
Bridge across Little Platte River.  
N. 54° 56' W. 73.8'

