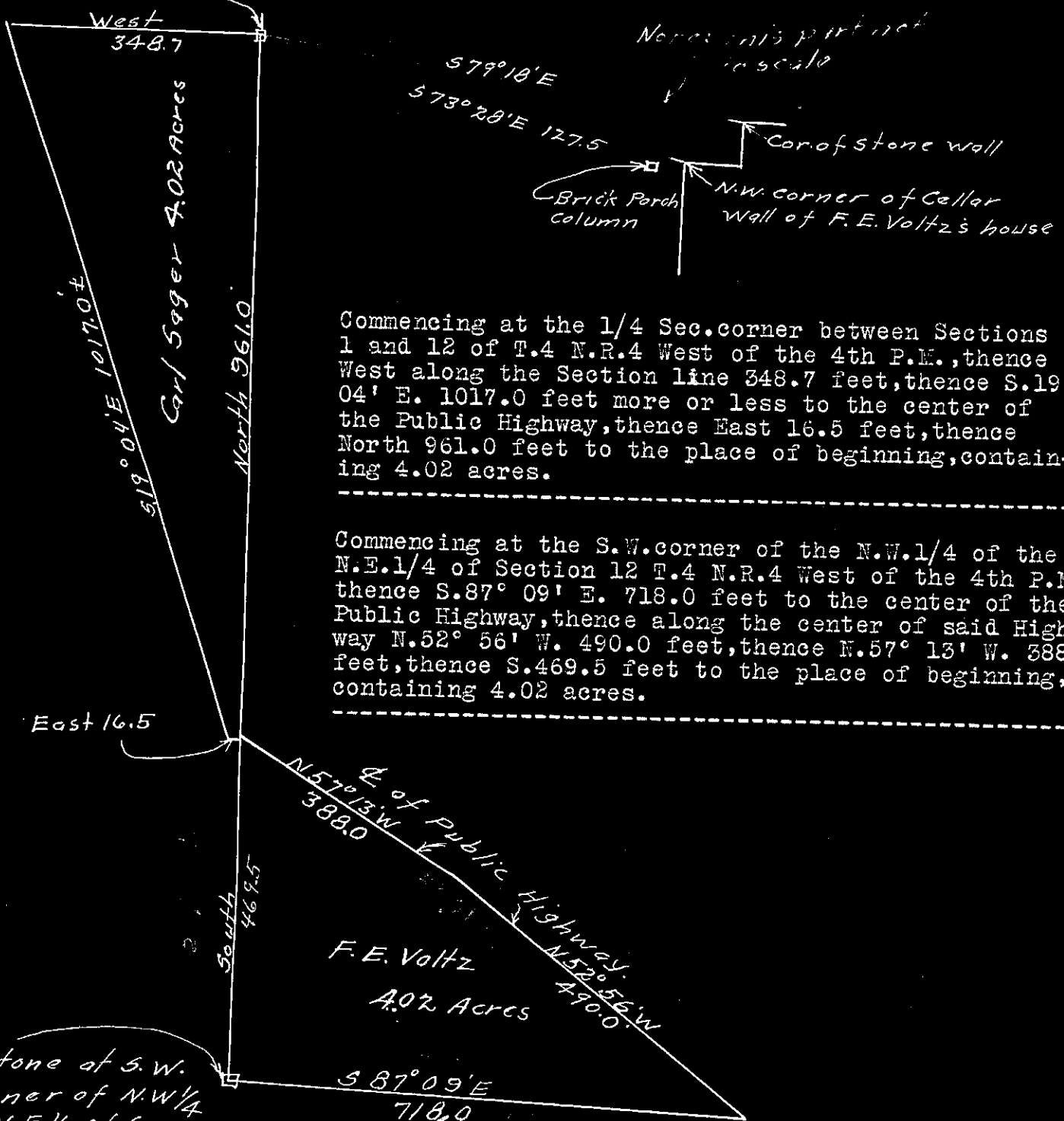


Surveyed Oct 15-1928

JOHN T. BUSER
CIVIL ENGINEER
PLATTEVILLE, WIS.

F.E. Voltz
William Sager
John T. Buser
Co. Surveyor.

Stone at 1/4 Sec. Cor.
between secs. 1 & 12
T4NR4W. of 4th P.M.



Commencing at the 1/4 Sec. corner between Sections 1 and 12 of T.4 N.R.4 West of the 4th P.M., thence West along the Section line 348.7 feet, thence S.19° 04' E. 1017.0 feet more or less to the center of the Public Highway, thence East 16.5 feet, thence North 961.0 feet to the place of beginning, containing 4.02 acres.

Commencing at the S.W. corner of the N.W. 1/4 of the N.E. 1/4 of Section 12 T.4 N.R.4 West of the 4th P.M. thence S.87° 09' E. 718.0 feet to the center of the Public Highway, thence along the center of said Highway N.52° 56' W. 490.0 feet, thence N.57° 13' W. 388.0 feet, thence S.469.5 feet to the place of beginning, containing 4.02 acres.

Stone of S.W. Corner of N.W. 1/4 of N.E. 1/4 of sec. 12 T4NR4W of 4th P.M.