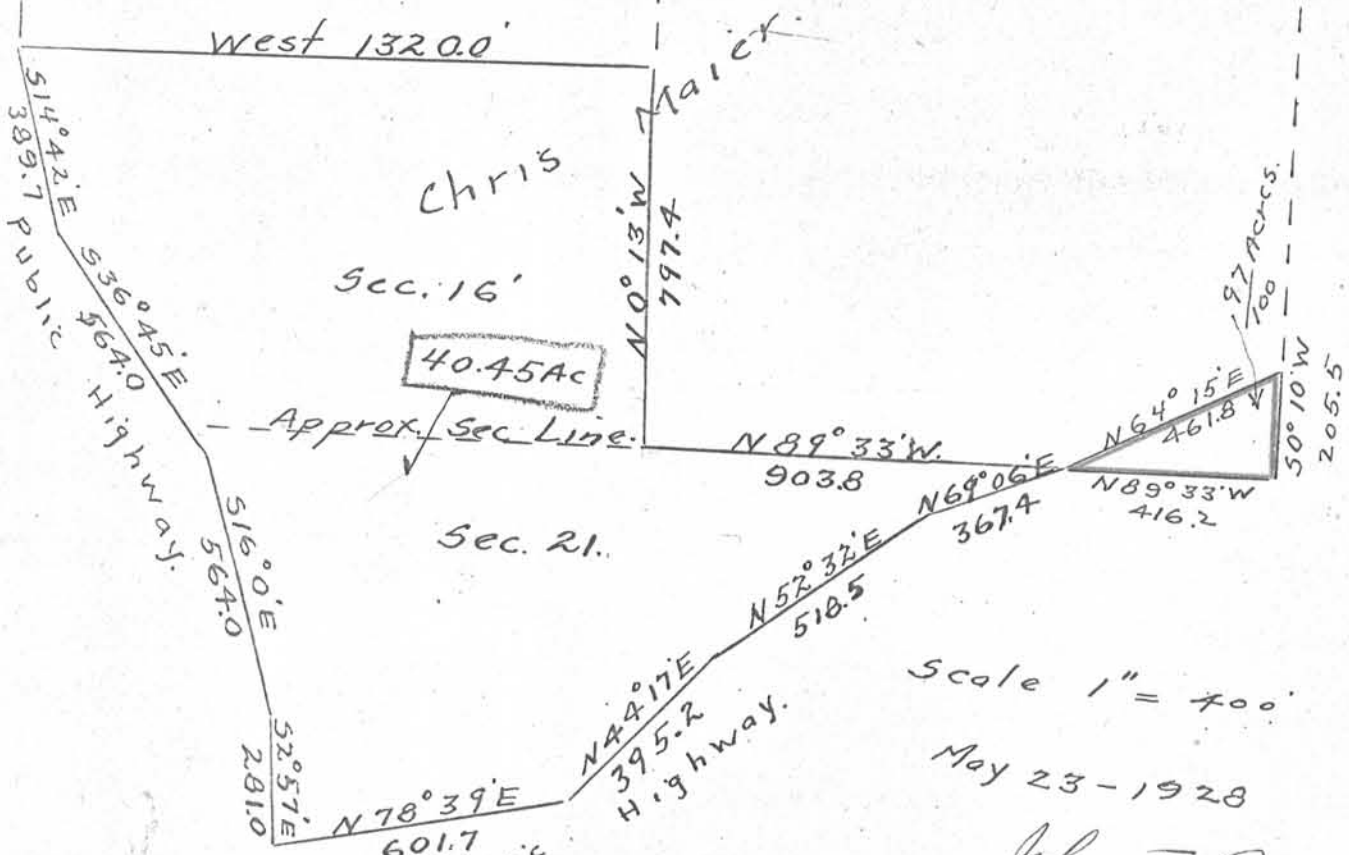


27a Part of the SW 1/4 of SW 1/4 of Sec 16 and part of
 N 1/2 of N.W. 1/4 of sec. 21 T6 NR2W of 4th P.M. Contg 40.45
 Acres.

NW 1/4 of SW 1/4
 of Sec 16 T.6 NR2W

E 1/2 of S.W. 1/4 of
 Sec. 16 T6 NR2W,
 except part enclosed
 by Red Lines.



146 acres regular
 1 out

 40.45 - this survey

 185.45