

WISCONSIN

Lancaster, Wis.

Surveyed April 22-1937

John Welch
John T. Buser
County Surveyor.

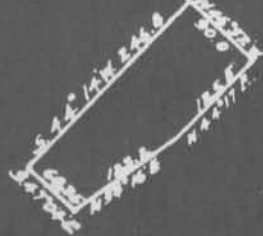
OFFICE OF
JOHN T. BUSER
SURVEYOR
PLATEVILLE, WIS.



Stone Monument at Corner
To Secs. 19, 20, 29 & 30 T.6
N.R. 34W. From this Cor.
The pole on the Cupola
of Mt. Ida School house
S. 22° 51' E

This line returned to the stone monument

S. 46° 52' E. 696.7



Survey of a tract of land in the Village, of Mt. Ida, Grant County, Wisconsin for the Peoples Telephone Company, described as follows:-

Commencing at a stone Monument at the corner to Sections 19, 20, 29 and 30 T.6 N.R. 3 West of the 4th P.M., Grant County, Wisconsin, thence running S. 46° 52' E. 696.7 feet to the place of beginning, thence running S. 44° 14' W. 246.8 feet, thence S. 47° 04' E. 68.35 feet, thence N. 54° 16' E. 123.2 feet, thence N. 44° 17' E. 125.5 feet, thence N. 46° 52' W. 90 feet to the place of beginning

EXHIBIT "A"