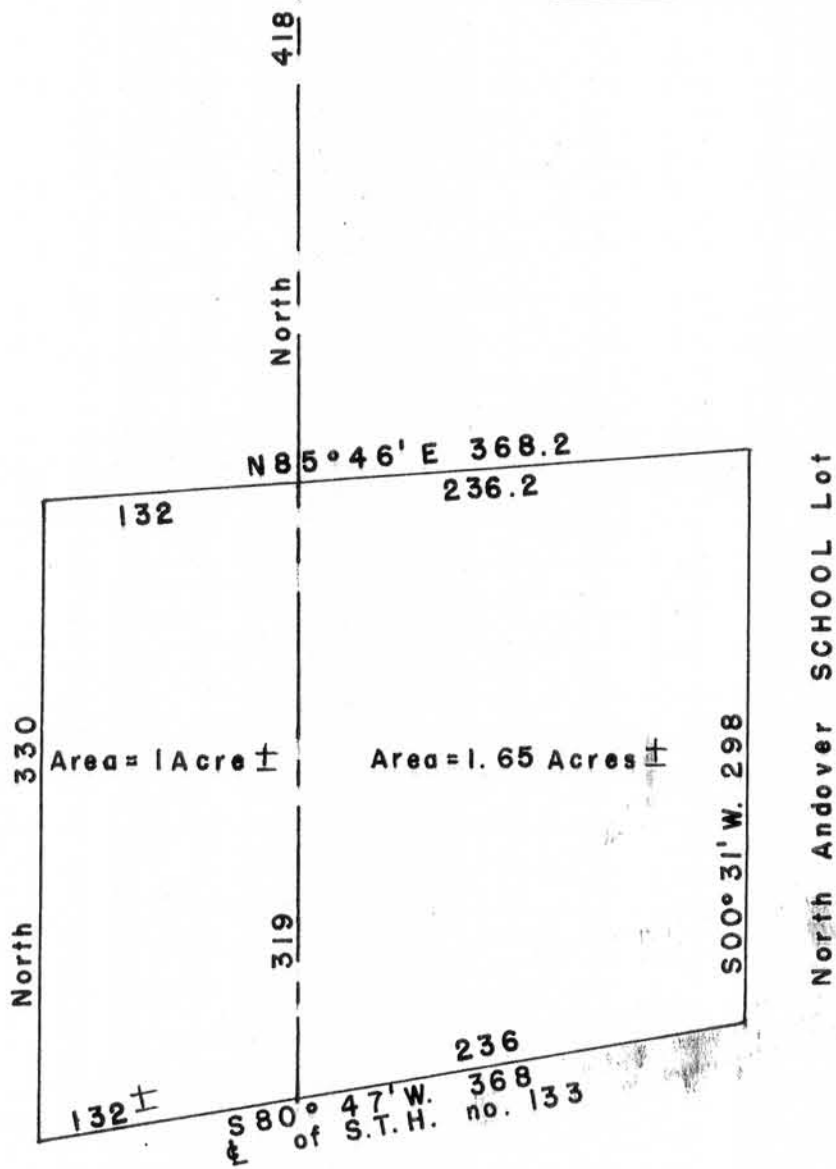


N.W. Cor. of S.E. 1/4  
of S.E. 1/4 of Sec. 16  
T4N R5W.



A Plat of part of the S.E.1/4 of the S.E.1/4; and part of the S.W.1/4 of the S.E.1/4 of Sec. 16 T 4 N, R 5 W., Grant Co., Wis., described as follows: Commencing at a point 418.0 ft. S. of the N.W. corner of the S.E.1/4 of the S.E.1/4 of said Sec. 16; thence N. 85°46' E.236.2 ft. to the N.W. corner of the School lot; thence along the W. side of the School Lot S. 00°31' W. 298.0 ft., to the center line of State Trunk Highway No. 133; thence along the center line of said highway S.80°47' W. 368 ft., thence North 330 ft., th. N. 85° 46' E. 132 ft. to the place of beginning, containing 2.65 acres more or less.