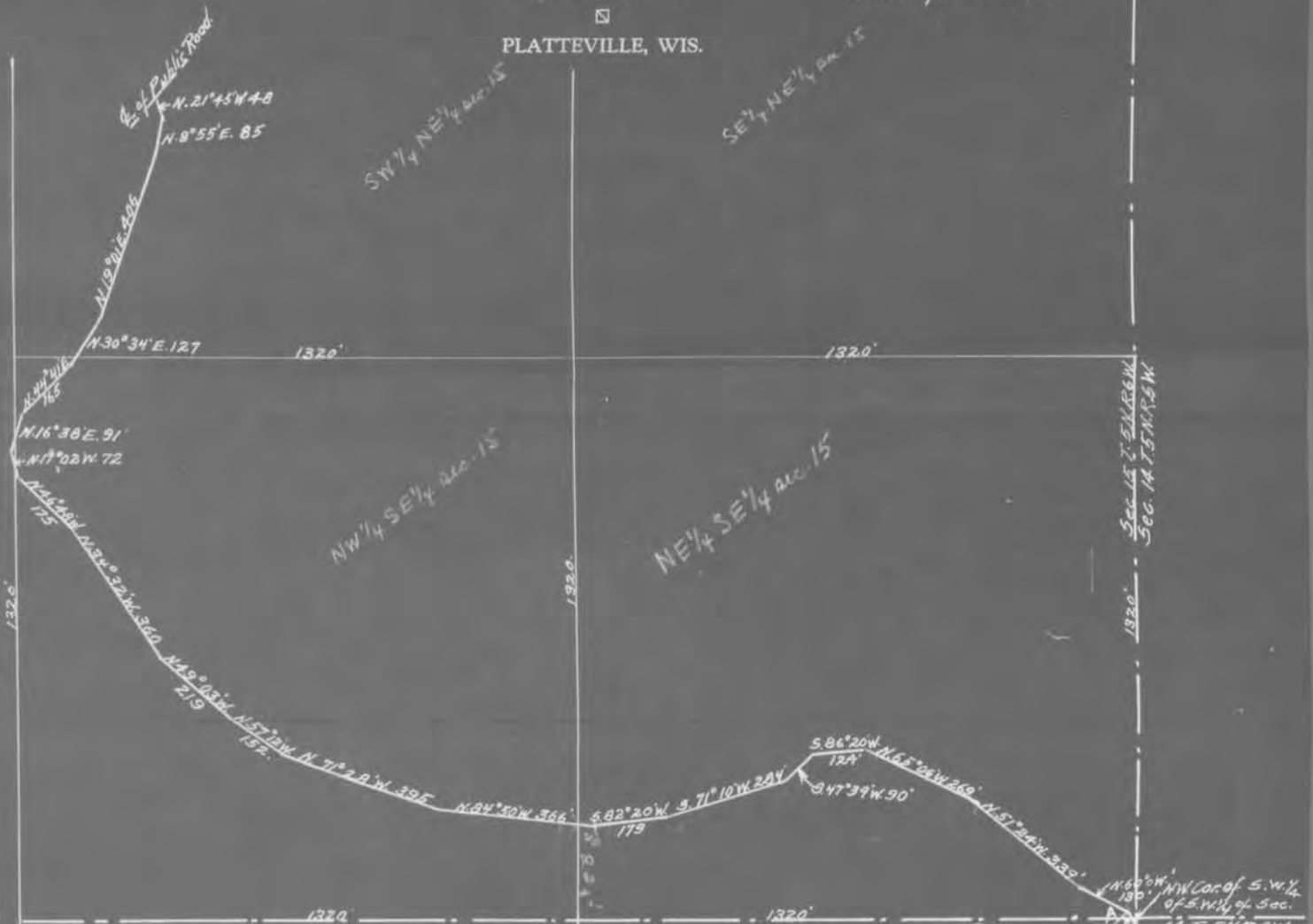


JOHN T. BUSER  
Civil Engineer

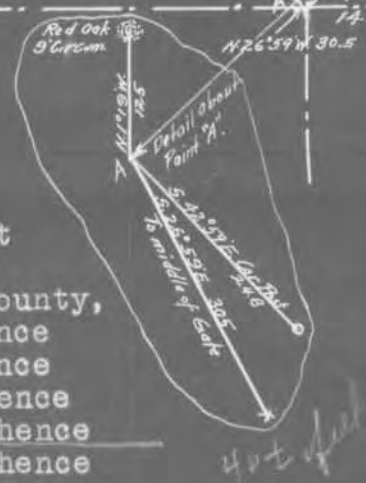
PLATTEVILLE, WIS.

Surveyed Nov 10-1934  
Viola F. Woltz.  
Betty Buser  
Frances Buser  
John T. Buser.  
County Surveyor



Description of a Private Road leading to the farm of **Nollie T. Clark**

Commencing at the middle of a Gate, which point is 10 feet more or less South of the North West corner of the South West Quarter (S.W. 1/4) of the South West Quarter (S.W. 1/4) of Section Fourteen (14) Town Five (5) North Range Six (6) West of the 4th P.M., Grant County, Wisconsin, thence running N. 26° 59' W. 30.5 feet, thence N. 60° 00' W. 130 feet, thence N. 51° 24' W. 339 feet, thence N. 65° 06' W. 269 feet, thence S. 86° 20' W. 124 feet, thence S. 47° 39' W. 90 feet, thence S. 71° 10' W. 284 feet, thence S. 82° 20' W. 179 feet, thence N. 84° 50' W. 366 feet, thence N. 71° 28' W. 395 feet, thence N. 57° 12' W. 152 feet, thence N. 49° 03' W. 219 feet, thence N. 34° 32' W. 360 feet, thence N. 46° 48' W. 175 feet, thence N. 17° 02' W. 72 feet, thence N. 16° 38' E. 91 feet, thence N. 44° 41' E. 165 feet, thence N. 30° 34' E. 127 feet, thence N. 19° 01' E. 406 feet, thence N. 8° 55' E. 85 feet, thence N. 21° 45' W. 48 feet to the center line of the public highway commonly known as the "Dry Hollow Road".

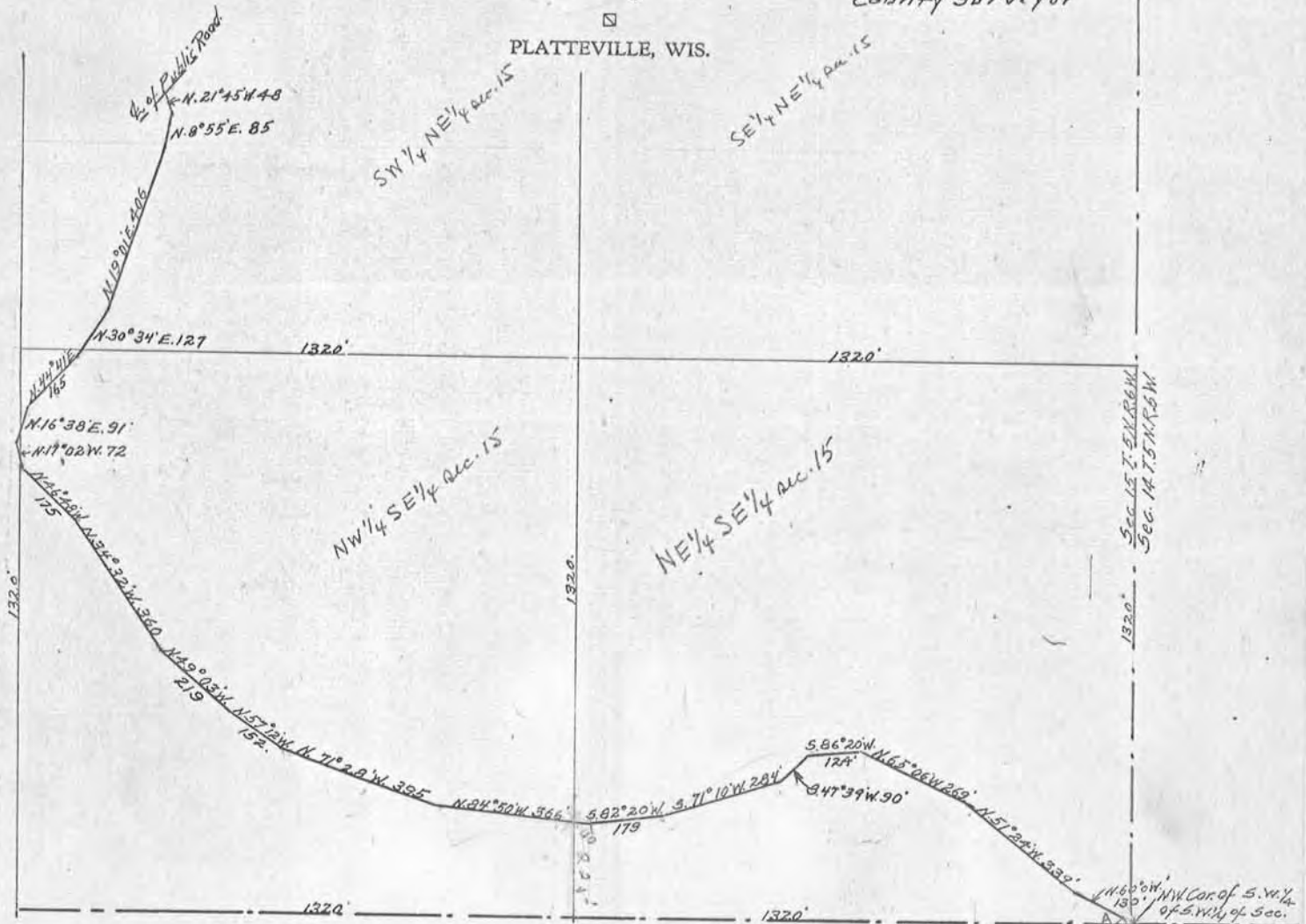




JOHN T. BUSER  
Civil Engineer

PLATTEVILLE, WIS.

Surveyed Nov. 10-1934  
Viola F. Wolz.  
Betty Buser  
Frances Buser  
John T. Buser.  
County Surveyor



Description of a Private Road leading to the farm of Mollie T. Clark

Commencing at the middle of a Gate, which point is 10 feet more or less South of the North West corner of the South West Quarter (S.W.1/4) of the South West Quarter (S.W.1/4) of Section Fourteen (14) Town Five (5) North Range Six (6) West of the 4th P.M., Grant County, Wisconsin, thence running N.26°59' W. 30.5 feet, thence N.60°00' W. 130 feet, thence N.51°24' W. 339 feet, thence N.65°06' W. 269 feet, thence S.86°20' W. 124 feet, thence S.47°39' W. 90 feet, thence S.71°10' W. 284 feet, thence S.82°20' W. 179 feet, thence N.84°50' W. 366 feet, thence N.71°28' W. 395 feet, thence N.57°12' W. 152 feet, thence N.49°03' W. 219 feet, thence N.34°32' W. 360 feet, thence N.46°48' W. 175 feet, thence N.17°02' W. 72 feet, thence N.16°38' E. 91 feet, thence N.44°41' E. 165 feet, thence N.30°34' E. 127 feet, thence N.19°01' E. 406 feet, thence N.8°55' E. 85 feet, thence N.21°45' W. 48 feet to the center line of the public highway commonly known as the "Dry Hollow Road".

