

Return to Fitzgerald & Lederman

Sheet 1 of 2

CERTIFIED SURVEY

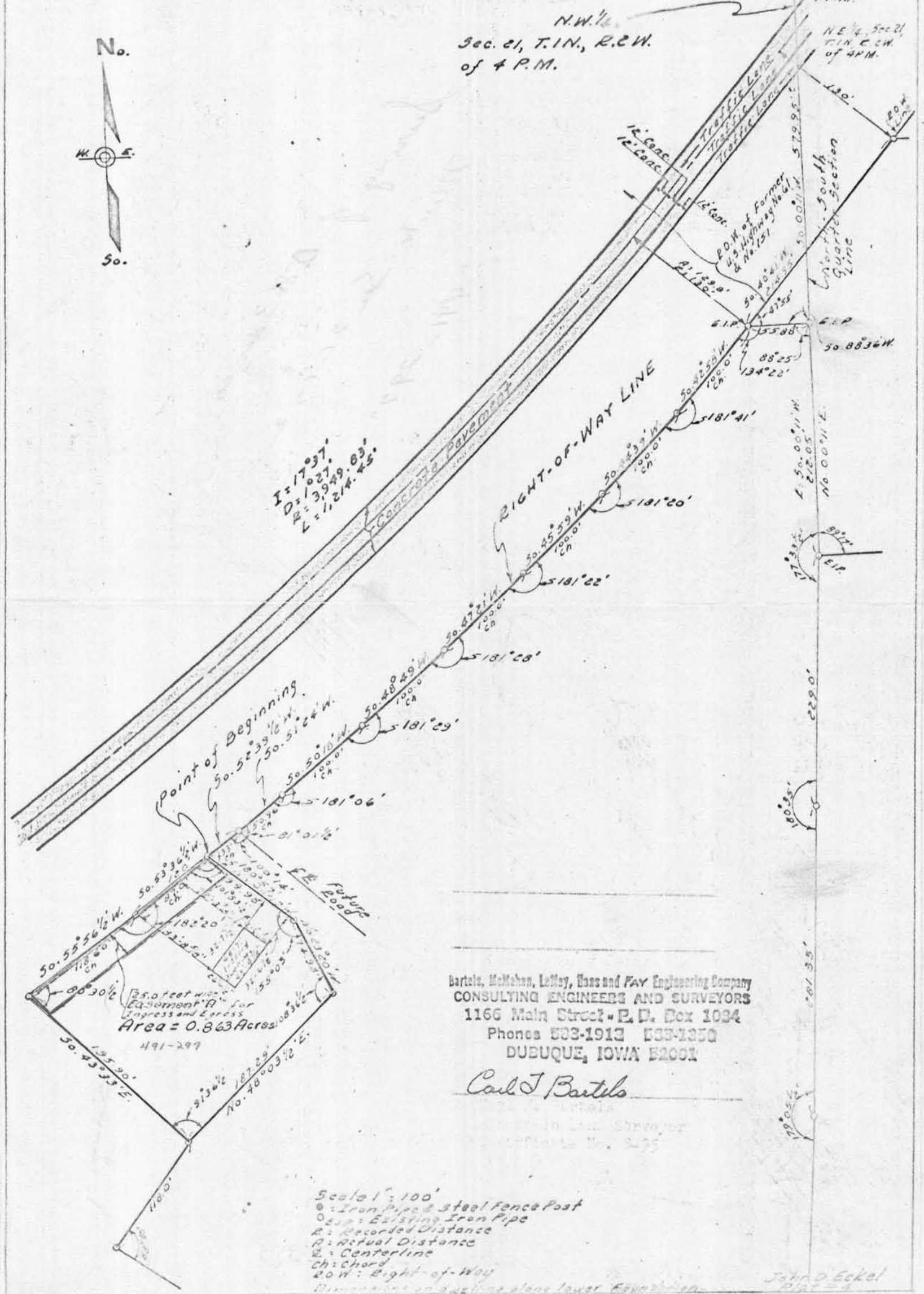


N.W. Corner of N.E. 1/4 Sec. 21, T.1N., R.2W. of 4 P.M.

N.W. 1/4 Sec. 21, T.1N., R.2W. of 4 P.M.

N.E. Corner Sec. 21, T.1N., R.2W. of 4 P.M.

N.E. 1/4, Sec. 21, T.1N., R.2W. of 4 P.M.



I = 17°37'
D = 1°02'
R = 3949.83'
L = 11274.45'

Point of Beginning
50.52°39'1/2" W
50.51°24" W
50.50°10" W
50.48°49" W



Bartels, McMahon, LeMay, Bass and Fay Engineering Company
CONSULTING ENGINEERS AND SURVEYORS
1166 Main Street - P. O. Box 1034
Phones 503-1913 503-1350
DUBUQUE, IOWA 52001

Carl J. Bartels

Professional Engineer
No. 3-25

Scale 1" = 100'
● = Iron Pipe & Steel Fence Post
○ = Existing Iron Pipe
R = Recorded Distance
A = Actual Distance
C = Centerline
Ch = Chord
20 W = Right-of-Way
Dimensions on a setting along lower foundation

John D. Eckel
Plat 34

397 E 1/2 NW