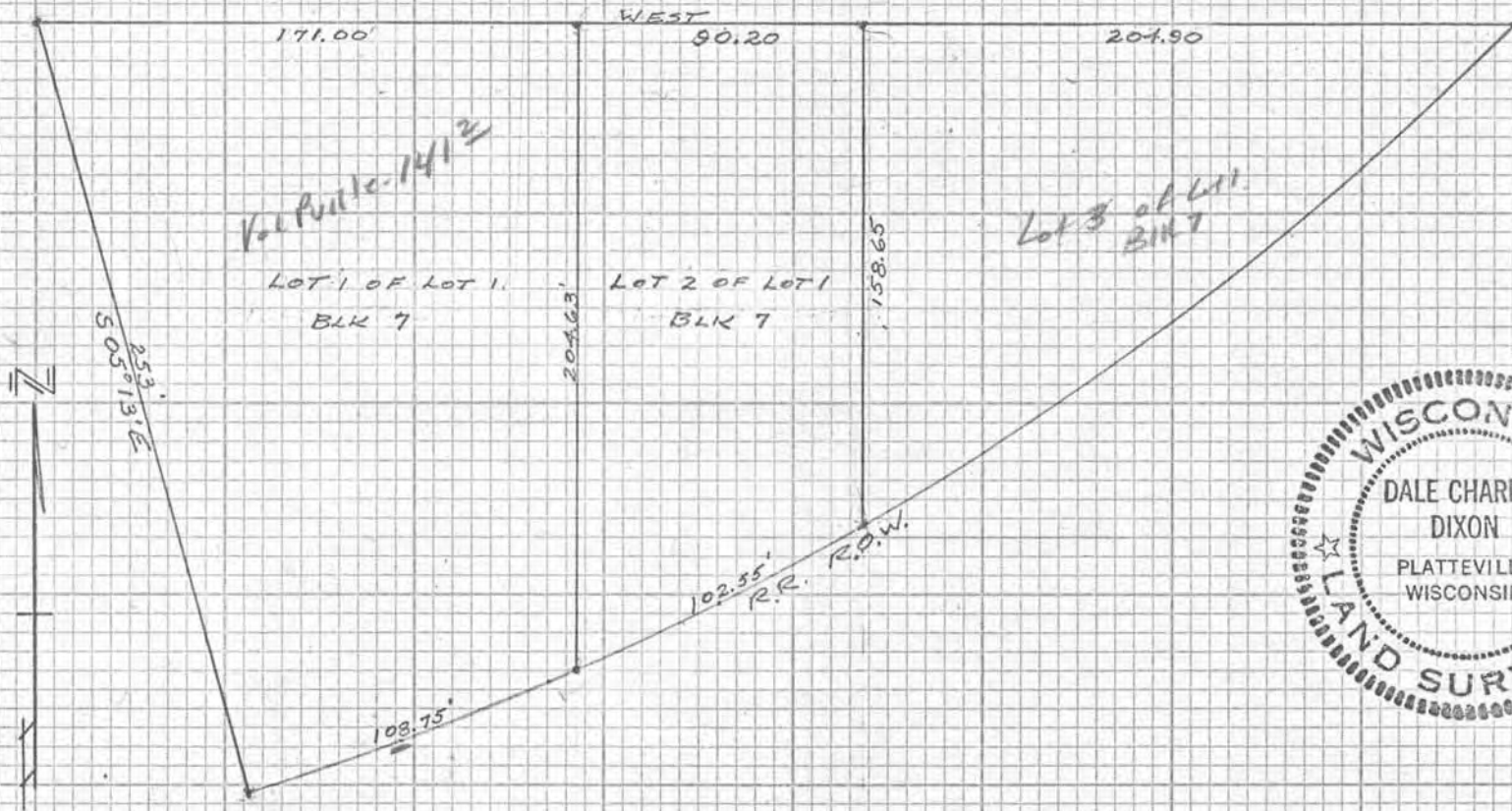




WITH COR 225.5  
SEC. 14 T3N  
R1W, 7TH PM.

EAST MINERAL ST.



"THE CHAMPION LINE" NO. 810  
CROSS SECTION - 10 SQUARES TO INCH

MERLIN KLAAS PROPERTY  
PART OF LOT 1 BLK 7  
ASSESSMENT PLAT  
PLATTEVILLE, WIS.  
4/14/67

*Dale Charles Dixon*