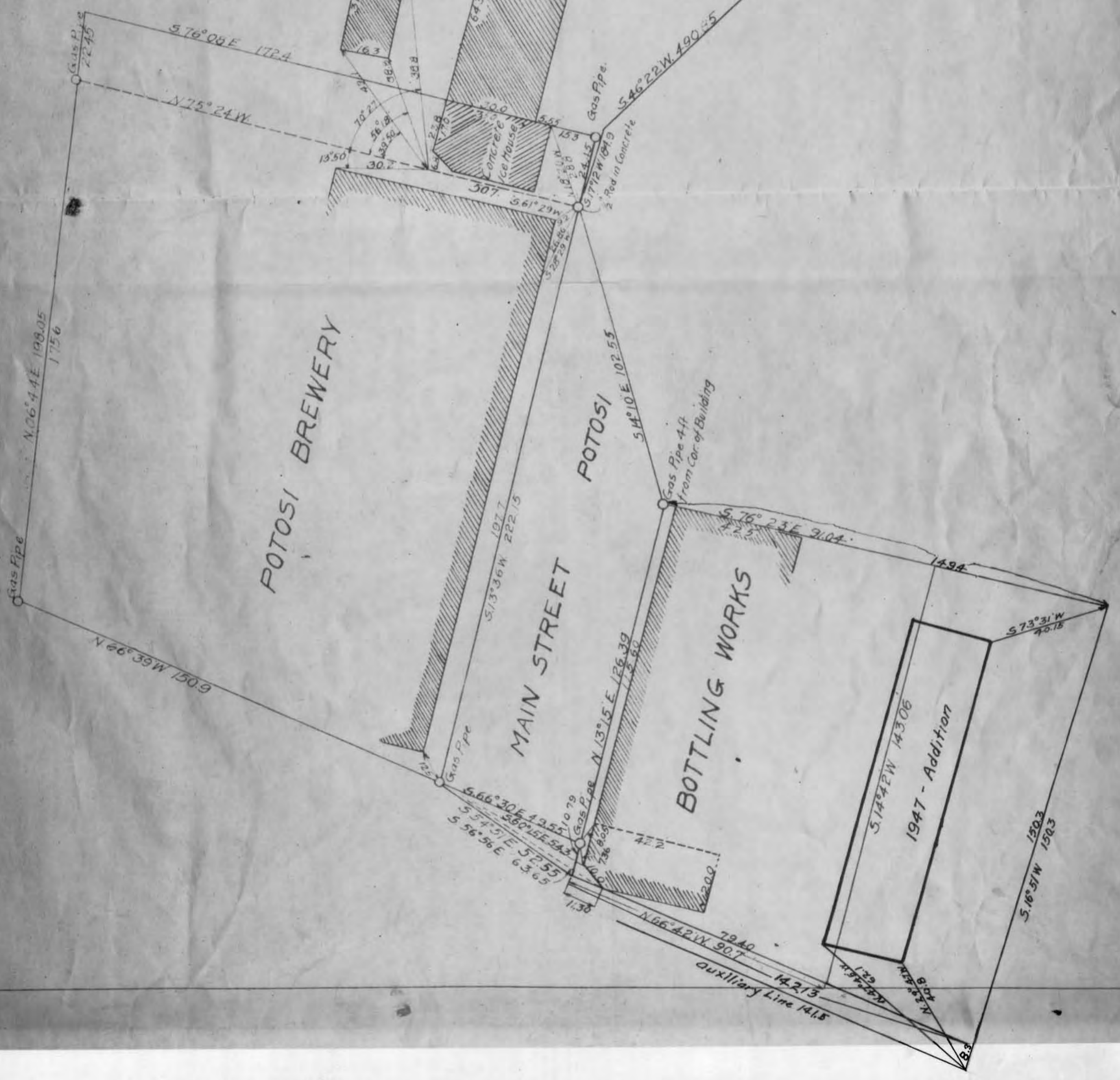


Sec. 3 and 4 T. 2 N. R. 3 W. of 4th P.M.
A B

PLAT OF A SURVEY
MADE FOR
THE POTOSI BREWERY, POTOSI WISCONSIN
Surveyed November 25, 1939 John T. Buser, County Surveyor
Scale - Traverse 1" = 200'
Details 1" = 30'



PLAT OF A SURVEY
MADE FOR

THE POTOSI BREWERY, POTOSI WISCONSIN.

Surveyed November 25 1939 John T. Euser, County Surveyor

Scale - Traverse 1" = 200
Details 1" = 30'

See Cor. to Secs 33 & 34 T3N R3W &
Secs 3 and 4 T2N R3W of 4th P. 14.

