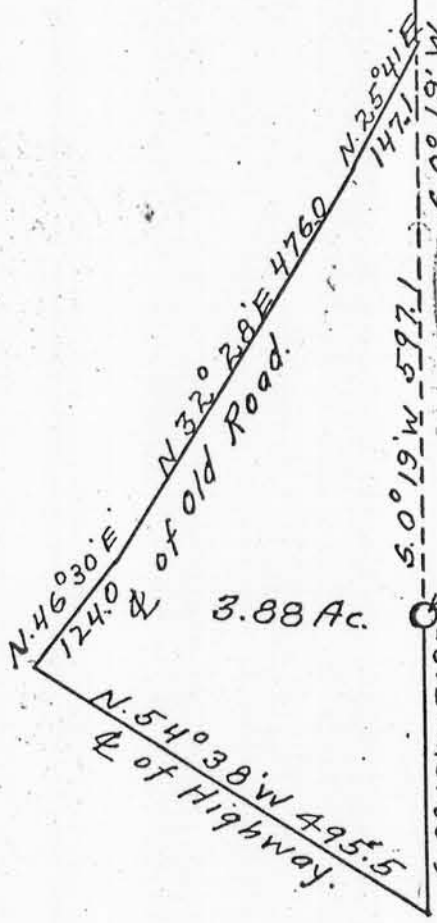


Stone to Cor. of Secs. 25, 26, 35 & 36 T. 7 N. R. 3 W.

Surveyed July 29, 1930.
Dave Blanchard,
John T. Buser, Co. Surveyor.

N.W. 1/4 of N.W. 1/4 of Sec. 36 T. 7 N. R. 3 West.



S.W. Cor. of N.W. 1/4 of N.W. 1/4 of Sec. 36 T. 7 N. R. 3 W.

Commencing at the S.E. corner of the N.E. 1/4 of the N.E. 1/4 of Section 35 T. 7 N. R. 3 West of the 4th P.M., Grant County, Wisconsin, thence along the Section line S. 0° 19' W. 309.3 feet to the center line of the Public highway, thence along said Highway N. 54° 38' W. 495.5 feet, thence N. 46° 30' E. 124.0 feet, thence N. 32° 28' E. 476.0 feet, thence N. 25° 41' E. 147.1 feet to the Section line between Sections 35 and 36 T. 7 N. R. 3 West, thence along said Section line S. 0° 19' W. 597.1 feet to the place of beginning, containing 3.88 acres; also the N.W. 1/4 of the N.W. 1/4 of Section 36 T. 7 N. R. 3 West of the 4th P.M.