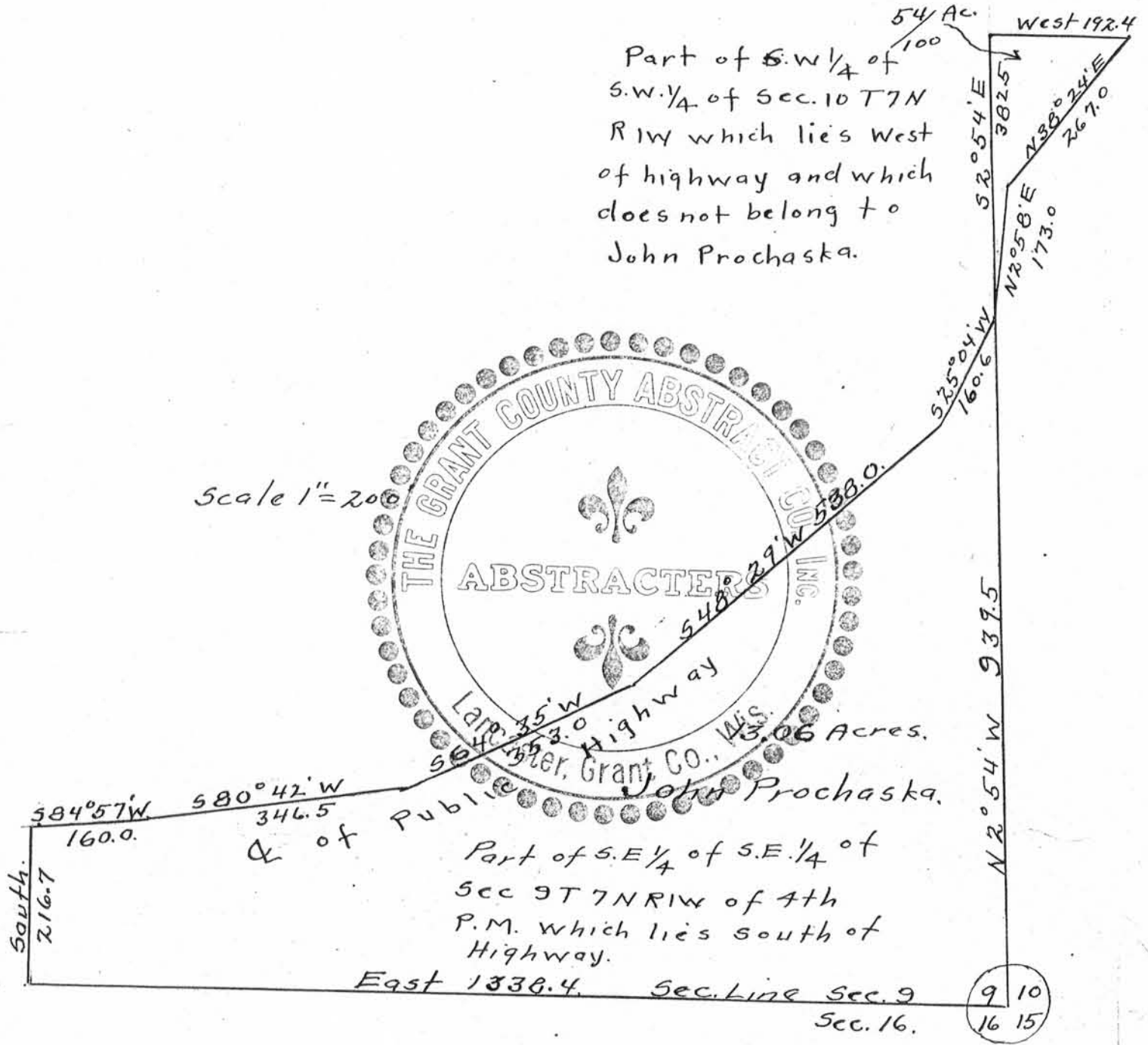


Part of S.W. 1/4 of S.W. 1/4 of Sec. 10 T7N R1W which lies West of highway and which does not belong to John Prochaska.

Scale 1" = 200'



I hereby certify that the above is a correct plat of the notes of a survey made by me on the 27th day of Feb. 1928 for John Prochaska.

John T. Buser
County Surveyor.