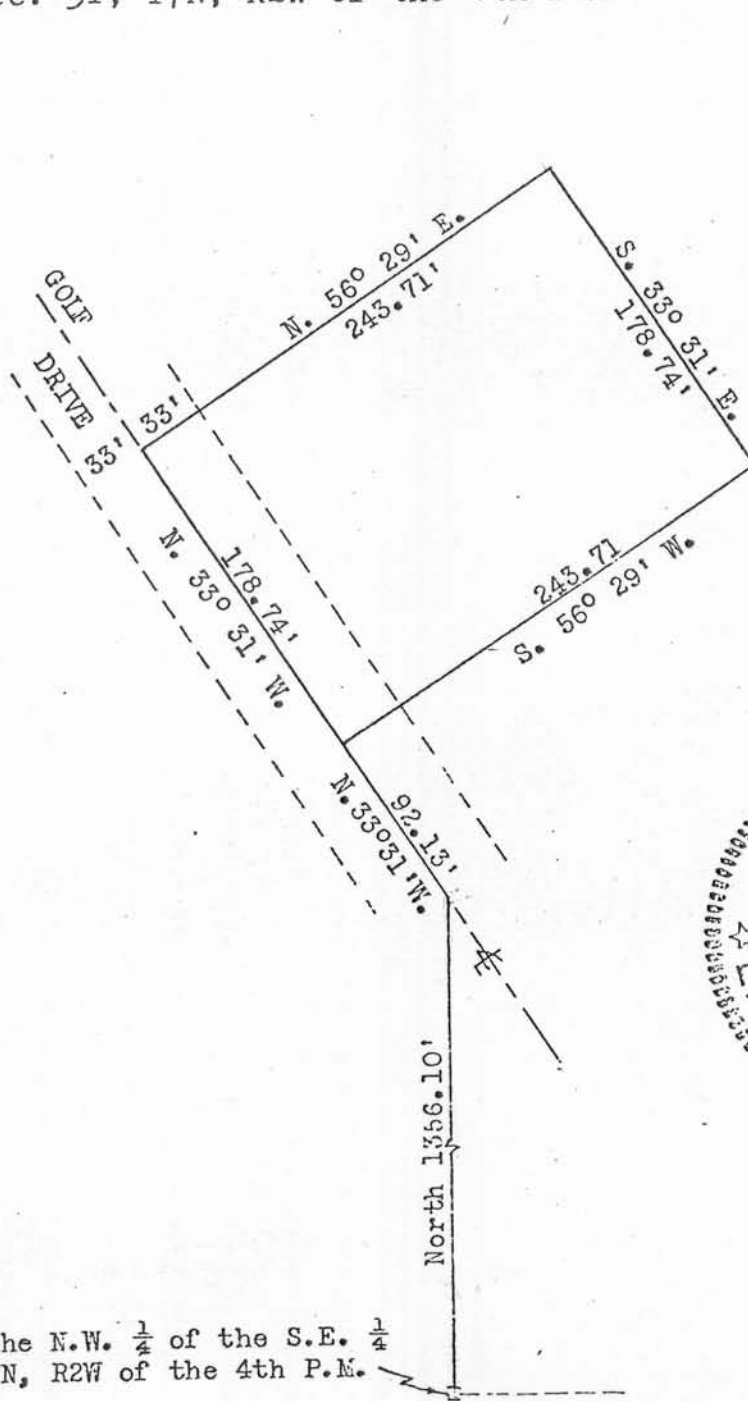


December 10, 1979

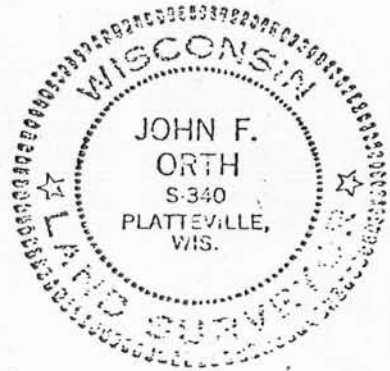
Terry Arndt Survey  
Hickory Grove Twp.  
Grant County

(2nd Revision of Description of 6/7/79 to Satisfy Sanitary Disposal Requirements)

Commencing at the S.W. Corner of the N.W. 1/4 of the S.E. 1/4 of Sec. 31, T7N, R2W of the 4th P.M., Grant County, Wisconsin; thence North 1356.10 ft.; thence N. 33° 31' W. 92.13 ft. to a point in the center-line of Golf Drive and the point of beginning; thence N. 33° 31' W. 178.74 ft. along said center-line; thence N. 56° 29' E. 243.71 ft.; thence S. 33° 31' E. 178.74 ft.; thence S. 56° 29' W. 243.71 ft. to the point of beginning, containing 1.00 acre, more or less, and being located in the S.W. 1/4 of the N.E. 1/4 and the S.E. 1/4 of the N.W. 1/4 of Sec. 31, T7N, R2W of the 4th P.M.



Scale: 1"=100'



S.W. Cor. of the N.W. 1/4 of the S.E. 1/4 of Sec. 31, T7N, R2W of the 4th P.M.