

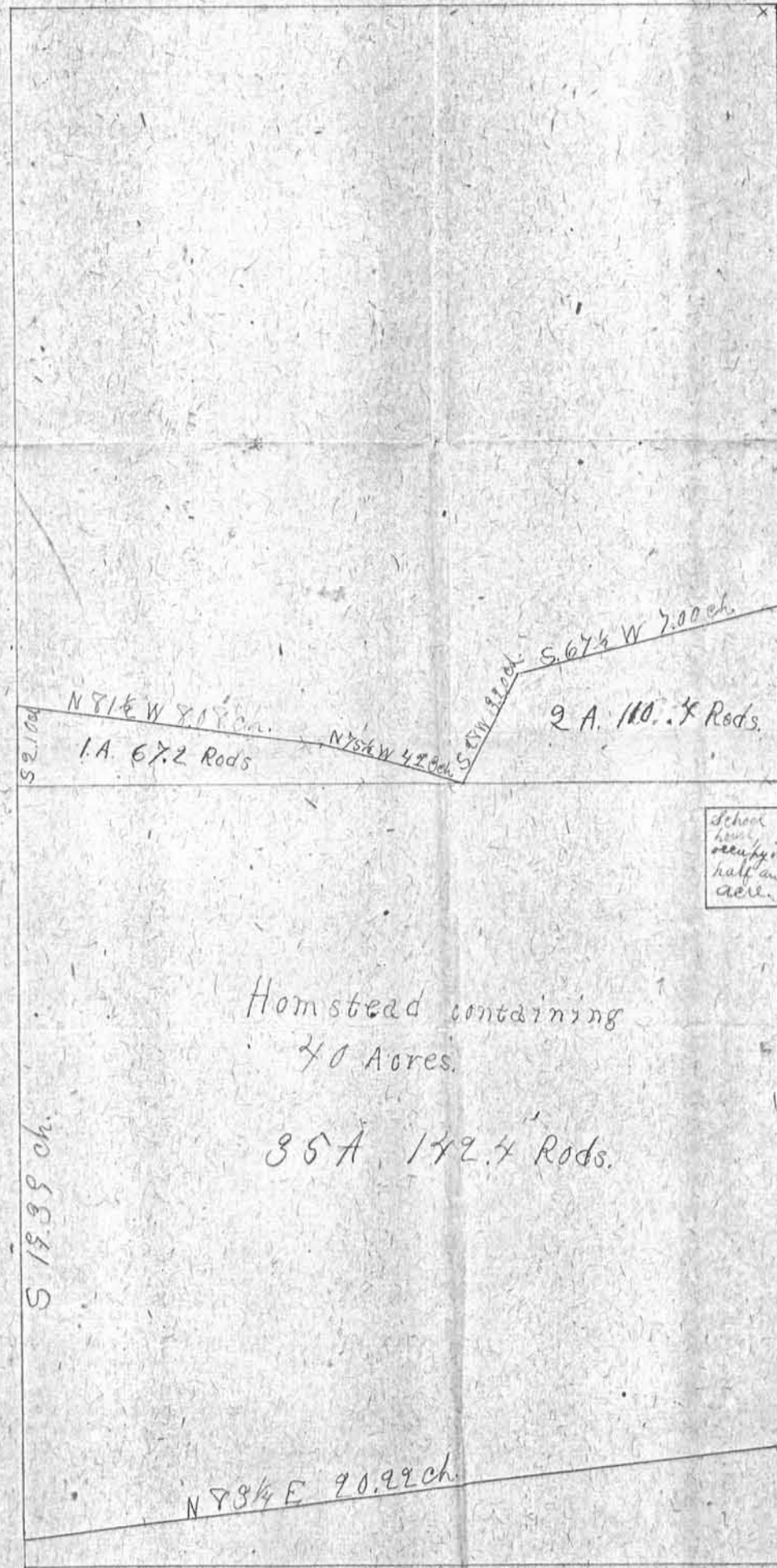
I hereby certify that the above is a true plat of survey of Homestead, on E 1/2 of N 1/2 of Section 16 T 7 R 2 W, under the direction of commissioners appointed for that purpose, commencing on east side of said tract of land at the N 1/2 Section corner thence north 7 5/8 ch. thence S 76 1/4 W 17.00 ch. - thence S 28 W 82.0 ch. - thence N 75 1/2 W 42.8 ch. - thence N 81 1/2 W 80.8 ch. - thence S 2.10 ch. to N 1/2 Section corner on west side of said tract of land - thence S 19.39 ch. thence N 83 1/4 E 20.22 ch. thence N 17.00 ch. to place of beginning; containing forty acres.

H. A. W. McNair, Surveyor.

North

West

East



Homestead containing 40 Acres.

35 A. 142.4 Rods.

Surveyor's fee \$3.00

South