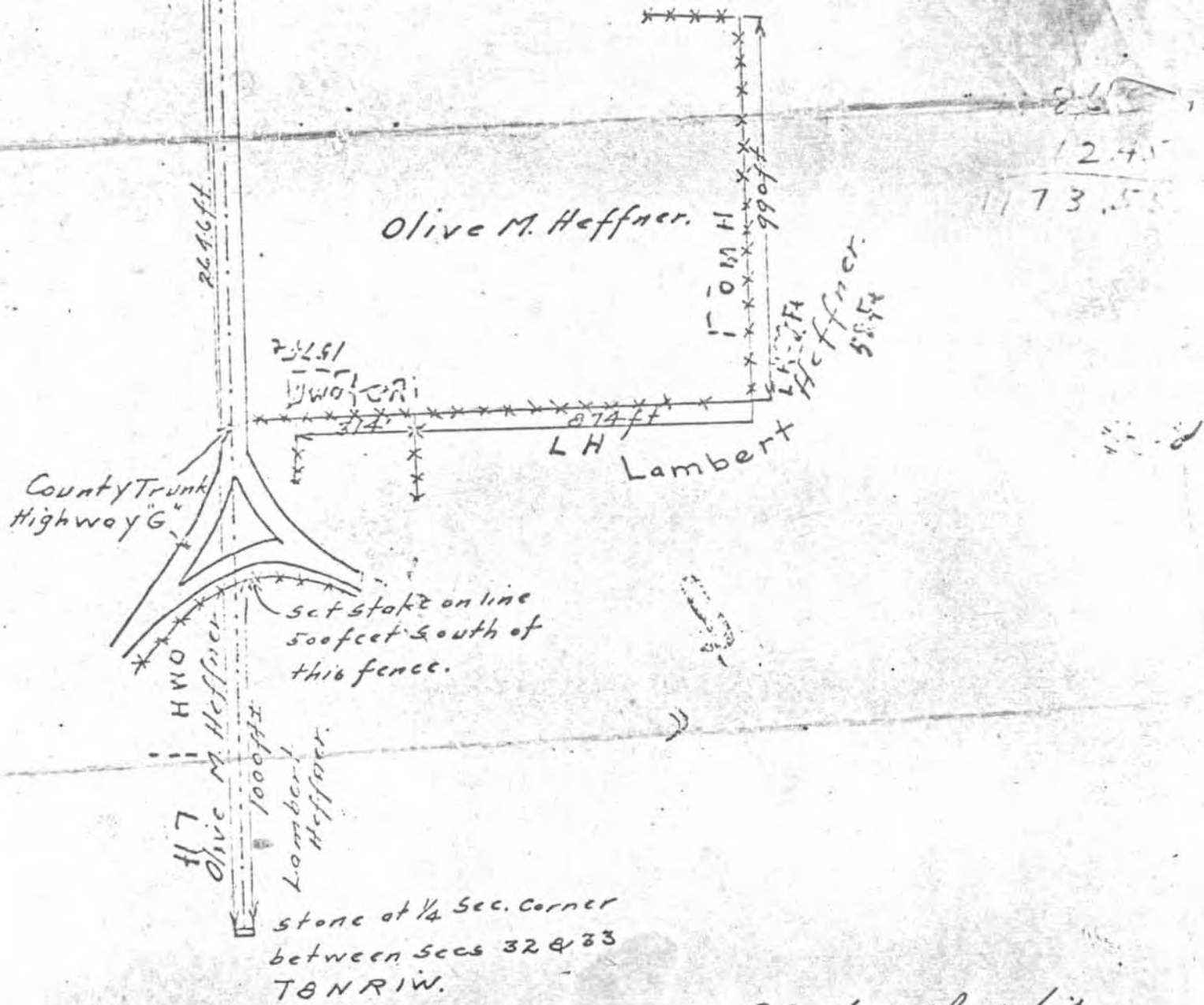


JOHN T. BUSER
 CIVIL ENGINEER
 PLATTEVILLE, WIS.

Survey Aug. 9, 1926.

Witness Rocks by former survey.
 To see corner to sections 28, 29,
 32 & 33 T8N R1W of 4th P.M.
 Original witness tree N 85° W good condition
 Corner is midway between the witness stones.



Platteville Wis.
 Aug. 16-1926
 John T. Buser
 County Surveyor.

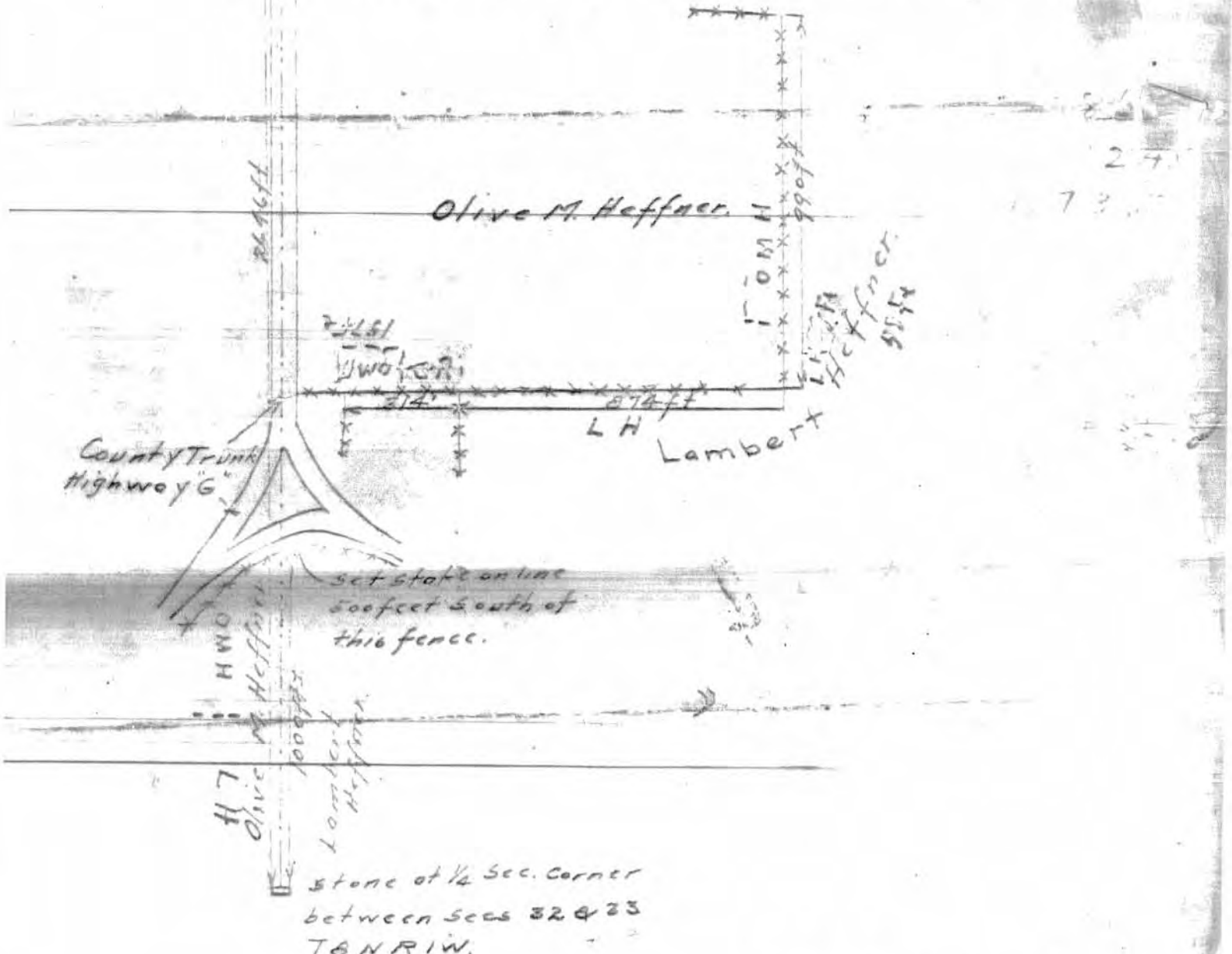
JOHN T. BUSER

CIVIL ENGINEER

PLATTEVILLE, WIS.

Survey Aug. 9, 1926

Witness Rocks by former survey.
To Sec. Corner to Sections 28, 29,
32 & 33 T8N R1W of 4th P.M.
Original witness tree N 85° W good condition
Corner is midway between the witness stones.



Platteville Wis.
Aug 16-1926
John T. Buser
County Surveyor.