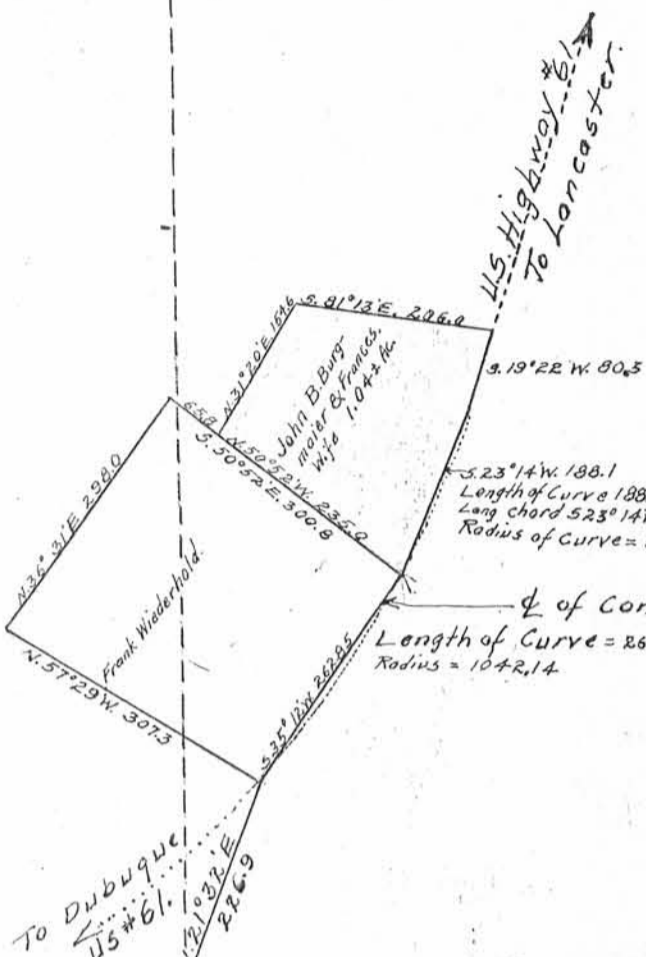


S.E. 1/4 of S.W. 1/4 of Sec 3 T.1 N. R. 2 W.



Length of Curve 188.34ft
Long chord 523° 14' W. 188.1
Radius of Curve = 1042.14

Length of Curve = 863.53
Radius = 1042.14

Sec. 3 T.1 N. R. 2 W.
Sec. 10 T.1 N. R. 2 W.

Plat of part of S. 1/2 of S.W. 1/4 of Sec. 3 T.1 N.R. 2 West of the 4th P.M., Grant County, Wisconsin showing the location of the land Abstracted.

North 1320.0 (not to scale)

S.E. Co. of N.W. 1/4 of N.W. 1/4 of Sec. 10 T.1 N. R. 2 W.

1" = 200'