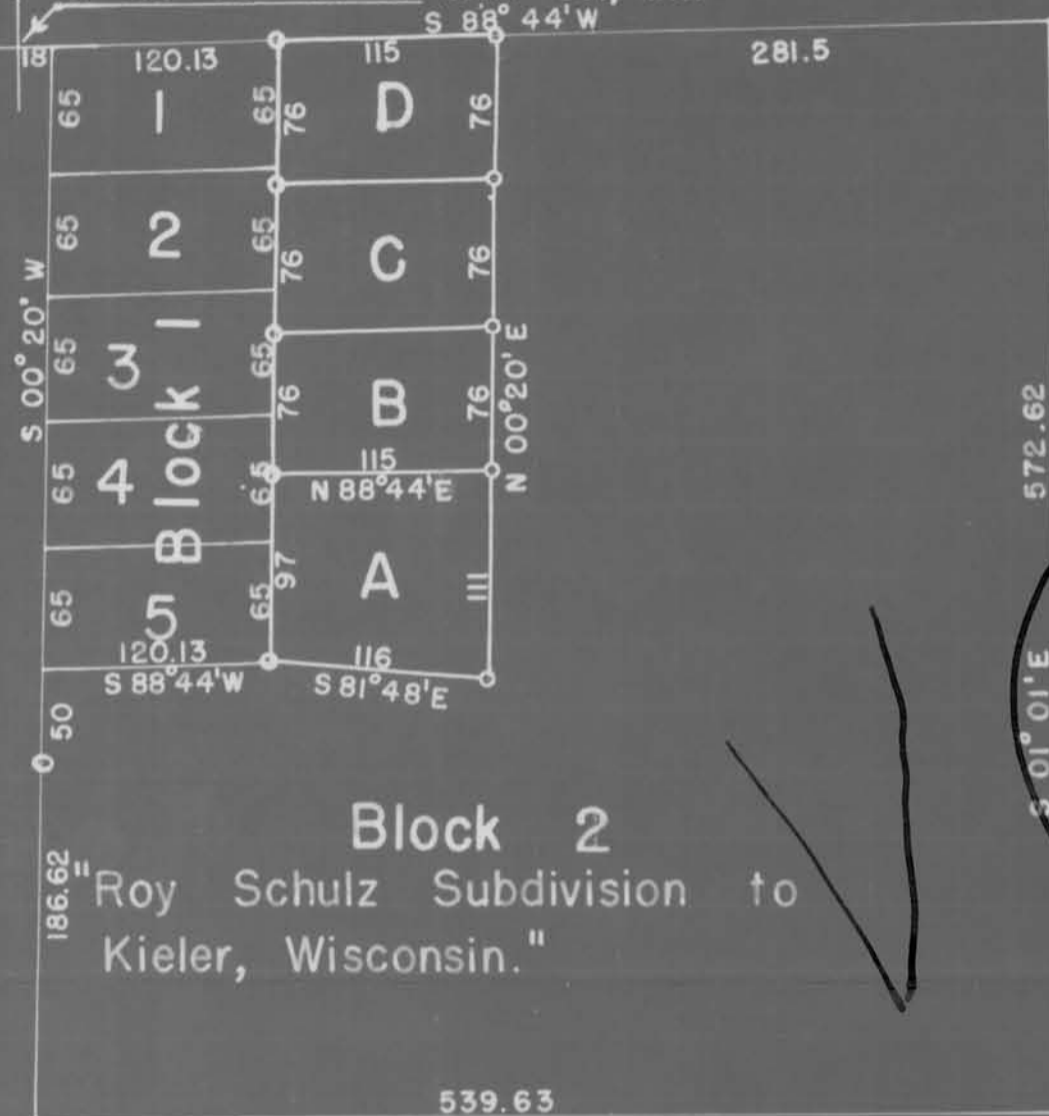


Northwest corner of S.W.1/4 of S.W.1/4 of Sec. 3, T1N, R2W.  
of the 4th P.M. in Grant Co., Wis.



SURVEY OF PART OF BLOCK 2 OF ROY SCHULZ SUBDIVISION TO KIELER, WISCONSIN

Descriptions of Parcels surveyed.

PARCEL "A"

Commence at the Southeast corner of Lot 5, Block 1 of Roy Schulz Subdivision to Kieler in the S.W.1/4 of the S.W.1/4 of Sec. 3, T 1 N, R 2 W. of the 4th P.M. in Grant County, Wisconsin; thence S 81° 48' E. 116 feet; thence N 00° 20' E. 111 feet; thence S 88° 44' W. 115 feet; thence S 00° 20' W. 97 feet to the place of beginning. All in Block 2 of said Roy Schulz Subdivision.

PARCEL "B"

Commence at a point N 00° 20' E. 97 feet from the Southeast corner of Lot 5, Block 1 of Roy Schulz Subdivision to Kieler in the S.W.1/4 of the S.W.1/4 of Sec. 3, T 1 N, R 2 W. of the 4th P.M. in Grant County, Wisconsin; thence N 00° 20' E. 76 feet; thence N 88° 44' E. 115 feet; thence S 00° 20' W. 76 feet; thence S 88° 44' W. 115 feet to the place of beginning. All in Block 2 of said Roy Schulz Subdivision.

PARCEL "C"

Commence at a point N 00° 20' E. 173 feet from the Southeast corner of Lot 5, Block 1 of Roy Schulz Subdivision to Kieler in the S.W.1/4 of the S.W.1/4 of Sec. 3, T 1 N, R 2 W. of the 4th P.M. in Grant County, Wisconsin; thence N 00° 20' E. 76 feet; thence N 88° 44' E. 115 feet; thence S 00° 20' W. 76 feet; thence S 88° 44' W. 115 feet to the place of beginning. All in Block 2 of said Roy Schulz Subdivision.

PARCEL "D"

Commence at a point N 00° 20' E. 249 feet from the Southeast corner of Lot 5, Block 1 of Roy Schulz Subdivision to Kieler in the S.W.1/4 of the S.W.1/4 of Sec. 3, T 1 N, R 2 W. of the 4th P.M. in Grant County, Wisconsin; thence N 00° 20' E. 76 feet; thence N 88° 44' E. 115 feet; thence S 00° 20' W. 76 feet; thence S 88° 44' W. 115 feet to the place of beginning. All in Block 2 of said Roy Schulz Subdivision.

State of Wisconsin)  
County of Grant ) ss

I, Homer D. Ralph, Jr., Surveyor for Grant County, Wisconsin hereby certify that on the 30th day of June, A.D., 1955, by order and direction of John W. Wiederholt I surveyed part of Block 2, of Roy Schulz Subdivision to Kieler, Wisconsin, and that this map and the accompanying descriptions are a true and correct representation of said survey.

*Homer D. Ralph, Jr.*  
Homer D. Ralph, Jr., Surveyor for  
Grant Co., Wis. 6/14/55