

28, 27

1/4 cor. between Secs. 27 & 28 T3N, R5W., of 4th P.M. Grant Co., Wis.

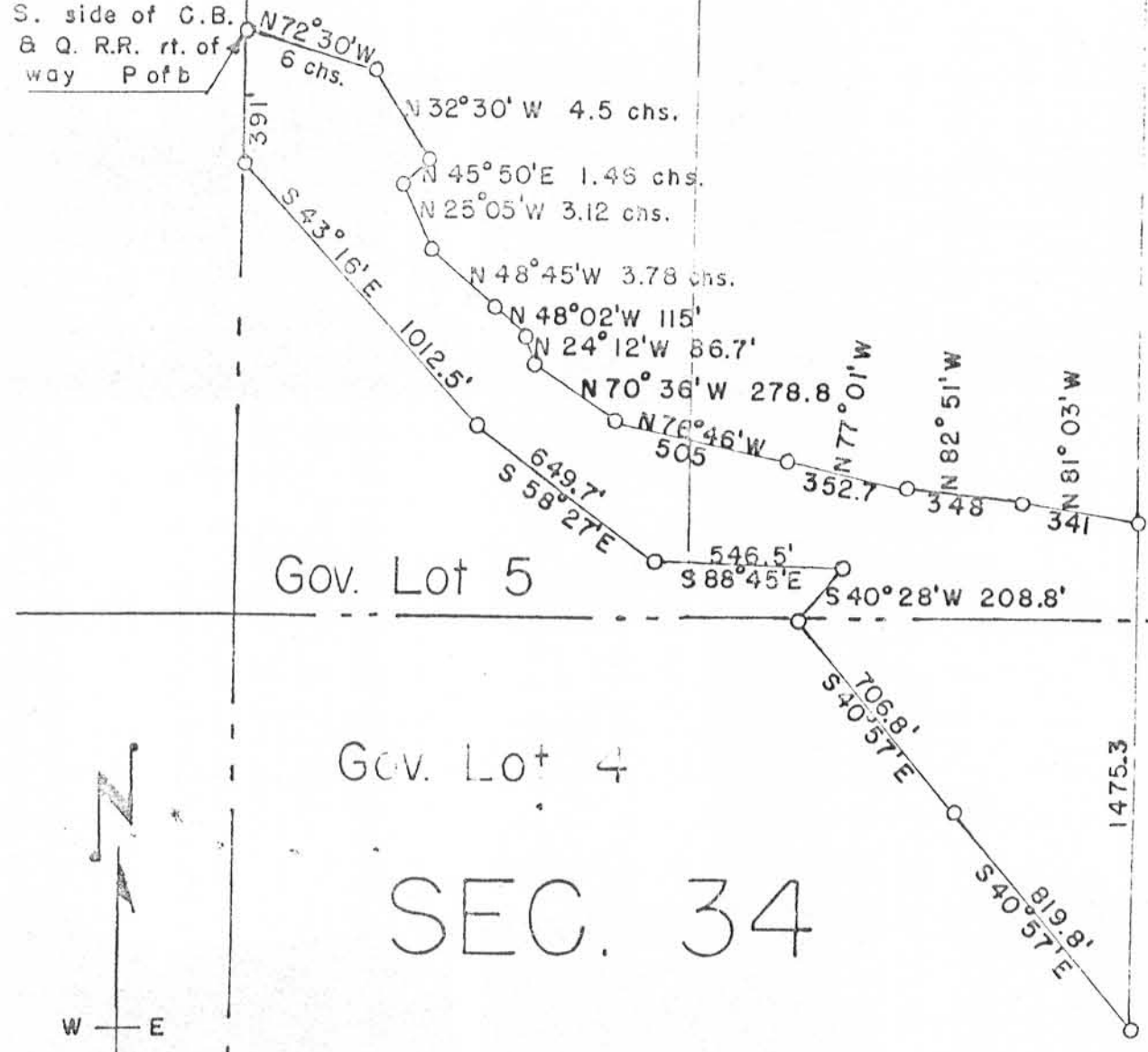
S. side of C.B. & Q. R.R. rt. of way P of b

Gov. Lot 1

Gov. Lot 2

Gov. Lot 3

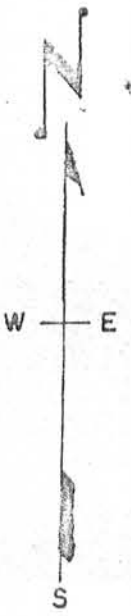
3



Gov. Lot 5

Gov. Lot 4

SEC. 34



Map showing the lands covered by this Abstract of Title.

