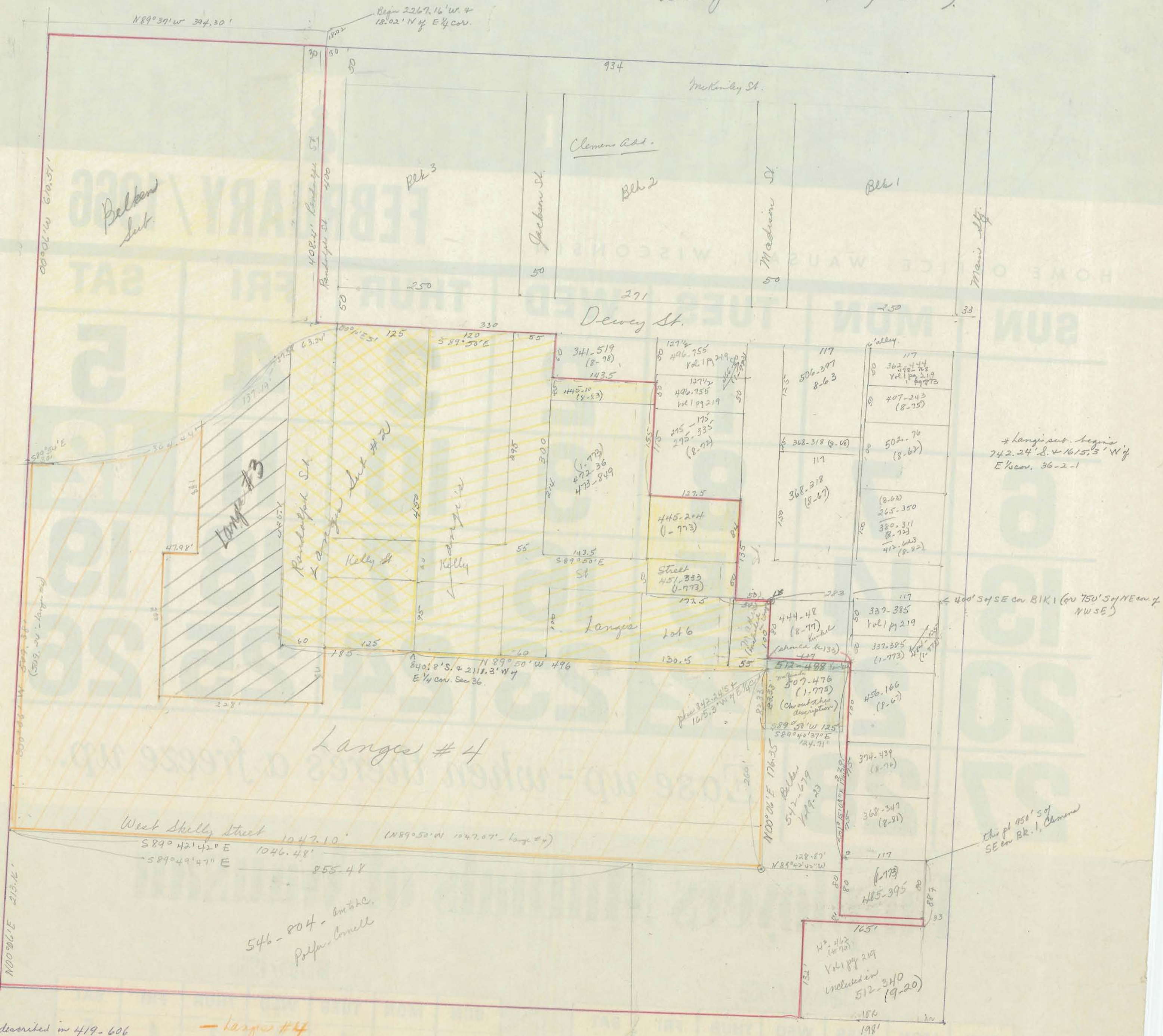




NW. SE. 36-2-1 (This plat is not exactly to scale)



\* Langes sub. begins  
742.24' S. + 1615.3' W of  
E' corner, 36-2-1

400' S + SE cor BK 1 (on 750' S of NE cor. of  
NW SE)

this pt 150' S of  
SE cor BK. 1, Clemons

- as described in 419-606
- new lands to be expected
- as in city data 1/26/76
- Langes #4
- Langes #3
- 526-436 describes Langes #3 + 4.