

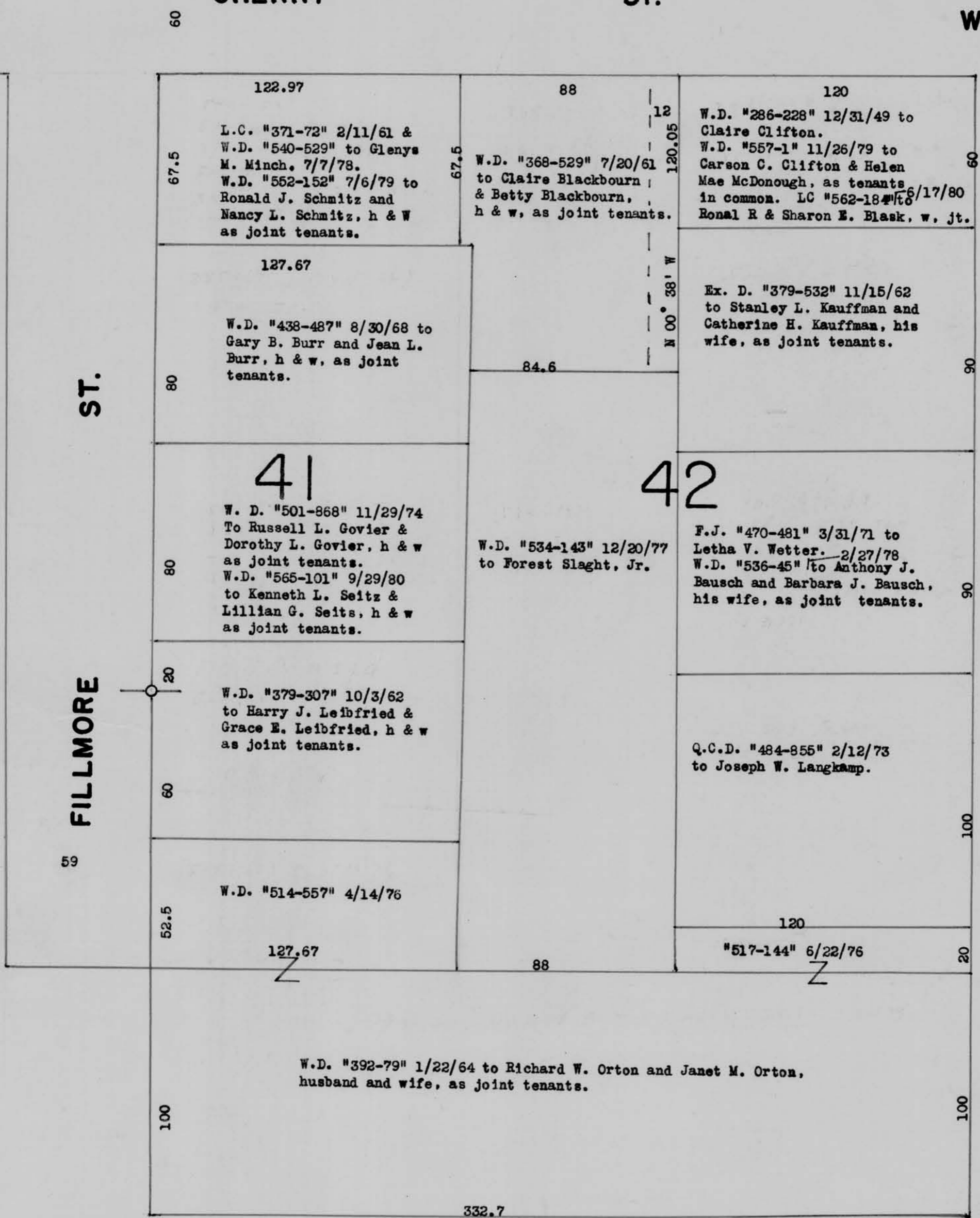
MAP OF BLOCKS 41 & 42,
ASSESSOR'S PLAT, CITY
OF LANCASTER, GRANT CO.,
WIS.



CHERRY ST.

ST.

W E



49

Prepared 11/15/82 by:

GRANT COUNTY ABSTRACT COMPANY
138 South Madison P.O. Box 71
Lancaster, WI 53813
(608) 723-4192

Legend

○ Designates center of S.W.1/4 of Section 3, T 4 N, R 3 W. of the 4th P.M., Grant County, Wisconsin.

--- Designates easement area mentioned in warranty deeds "368-529" and "534-143".