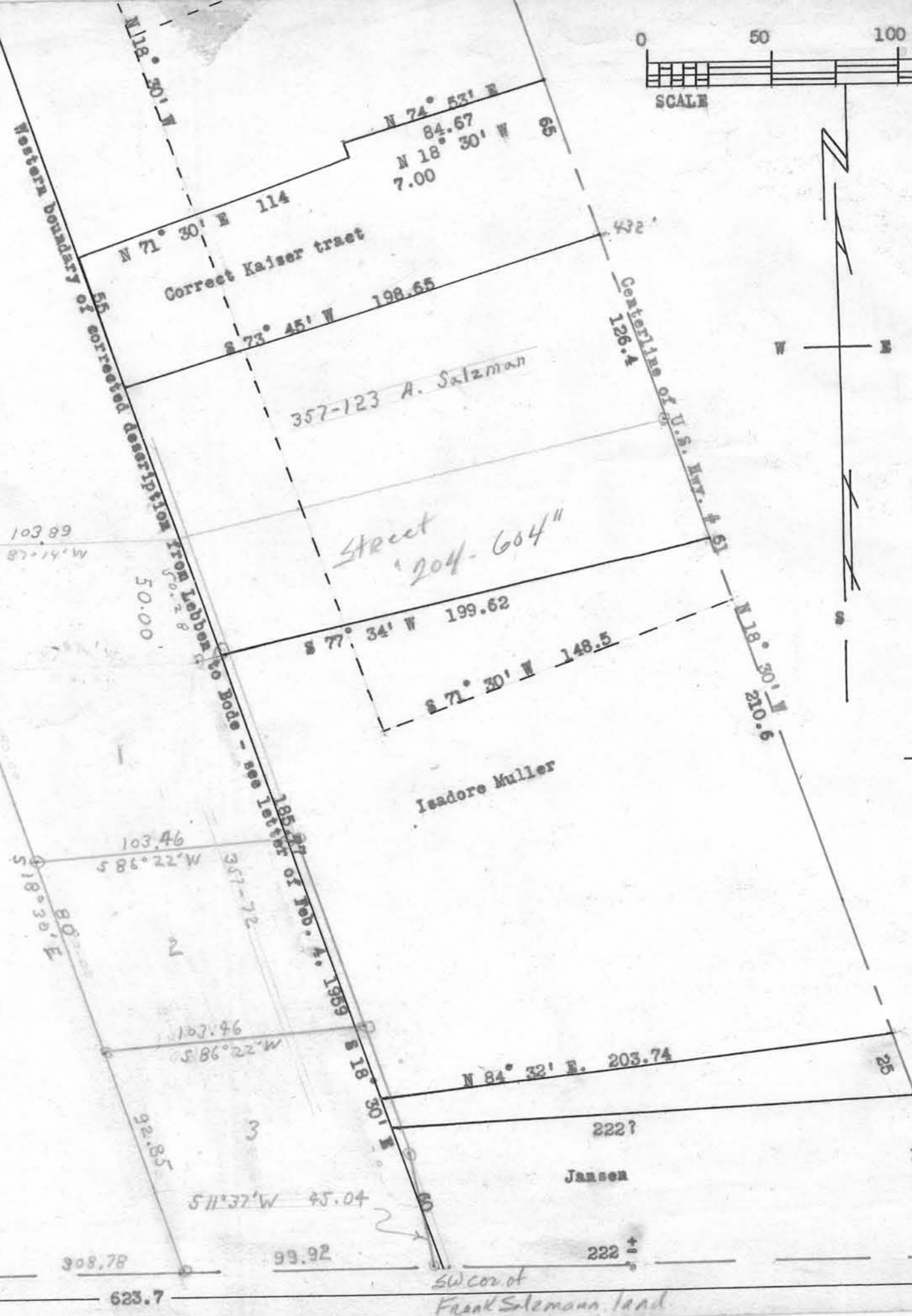




"247-563" Leon J. Dreesler

S.W. corner of S.E.1/4
of Sec. 22, T 2 N., R 2 W.
of 4th P.M., Grant Co., Wis



"172-585" & "186-577"

"194-166"
Frank Salzman

SE cor. of
Frank Salzman land
or Anderson
Joseph Bode

623.7

99.92

222 ±

103.89
S 87° 14' W

103.46
S 86° 22' W

107.46
S 86° 22' W

50.00

357-72

92.85

308.78

51.95

S 18° 30' E

Street
"204-604"

222?

Jansen

N 12° 30' W

Centerline of U.S. Hwy. # 51
129.4

50.00

357-72

92.85

308.78

51.95

S 18° 30' E

Street
"204-604"

222?

Jansen

N 12° 30' W

Centerline of U.S. Hwy. # 51
129.4

50.00

357-72

92.85

308.78

51.95

S 18° 30' E

Street
"204-604"

222?

Jansen

N 12° 30' W

Centerline of U.S. Hwy. # 51
129.4

50.00

357-72

92.85

308.78

51.95

S 18° 30' E

Street
"204-604"

222?

Jansen

N 12° 30' W

Centerline of U.S. Hwy. # 51
129.4

50.00

357-72

92.85

308.78

51.95

S 18° 30' E

Street
"204-604"

222?

Jansen

N 12° 30' W

Centerline of U.S. Hwy. # 51
129.4

50.00

357-72

92.85

308.78

51.95

S 18° 30' E

Street
"204-604"

222?

Jansen

N 12° 30' W

Centerline of U.S. Hwy. # 51
129.4

50.00

357-72

92.85

308.78

51.95

S 18° 30' E

Street
"204-604"

222?

Jansen

N 12° 30' W

Centerline of U.S. Hwy. # 51
129.4

50.00

357-72

92.85

308.78

51.95

S 18° 30' E

Street
"204-604"

222?

Jansen

N 12° 30' W

Centerline of U.S. Hwy. # 51
129.4

50.00

357-72

92.85

308.78

51.95

S 18° 30' E

Street
"204-604"

222?

Jansen

N 12° 30' W

Centerline of U.S. Hwy. # 51
129.4

50.00

357-72

92.85

308.78

51.95

S 18° 30' E

Street
"204-604"

222?

Jansen

N 12° 30' W

Centerline of U.S. Hwy. # 51
129.4

50.00

357-72

92.85

308.78

51.95

S 18° 30' E

Street
"204-604"

222?

Jansen

N 12° 30' W

Centerline of U.S. Hwy. # 51
129.4

50.00

357-72

92.85

308.78

51.95

S 18° 30' E

Street
"204-604"

222?

Jansen

N 12° 30' W

Centerline of U.S. Hwy. # 51
129.4

50.00

357-72

92.85

308.78

51.95

S 18° 30' E

Street
"204-604"

222?

Jansen

N 12° 30' W

Centerline of U.S. Hwy. # 51
129.4

50.00

357-72

92.85

308.78

51.95

S 18° 30' E

Street
"204-604"

222?

Jansen

N 12° 30' W

Centerline of U.S. Hwy. # 51
129.4

50.00

357-72

92.85

308.78

51.95

S 18° 30' E

Street
"204-604"

222?

Jansen

N 12° 30' W

Centerline of U.S. Hwy. # 51
129.4

50.00

357-72

92.85

308.78

51.95

S 18° 30' E

Street
"204-604"

222?

Jansen

N 12° 30' W

Centerline of U.S. Hwy. # 51
129.4

50.00

357-72

92.85

308.78

51.95

S 18° 30' E

Street
"204-604"

222?

Jansen

N 12° 30' W

Centerline of U.S. Hwy. # 51
129.4

50.00

357-72

92.85

308.78

51.95

S 18° 30' E

Street
"204-604"

222?

Jansen

N 12° 30' W

Centerline of U.S. Hwy. # 51
129.4

50.00

357-72

92.85

308.78

51.95

S 18° 30' E

Street
"204-604"

222?

Jansen

N 12° 30' W

Centerline of U.S. Hwy. # 51
129.4

50.00

357-72

92.85

308.78

51.95

S 18° 30' E

Street
"204-604"

222?

Jansen

N 12° 30' W

Centerline of U.S. Hwy. # 51
129.4

50.00

357-72

92.85

308.78

51.95

S 18° 30' E

Street
"204-604"

222?

Jansen

N 12° 30' W

Centerline of U.S. Hwy. # 51
129.4

50.00

357-72

92.85

308.78

51.95

S 18° 30' E

Street
"204-604"

222?

Jansen

N 12° 30' W

Centerline of U.S. Hwy. # 51
129.4

50.00

357-72

92.85

308.78

51.95

S 18° 30' E

Street
"204-604"

222?

Jansen

N 12° 30' W

Centerline of U.S. Hwy. # 51
129.4

50.00

357-72

92.85

308.78

51.95

S 18° 30' E</