

PT. ON NW CORNER OF NEISES SURVEY

33'



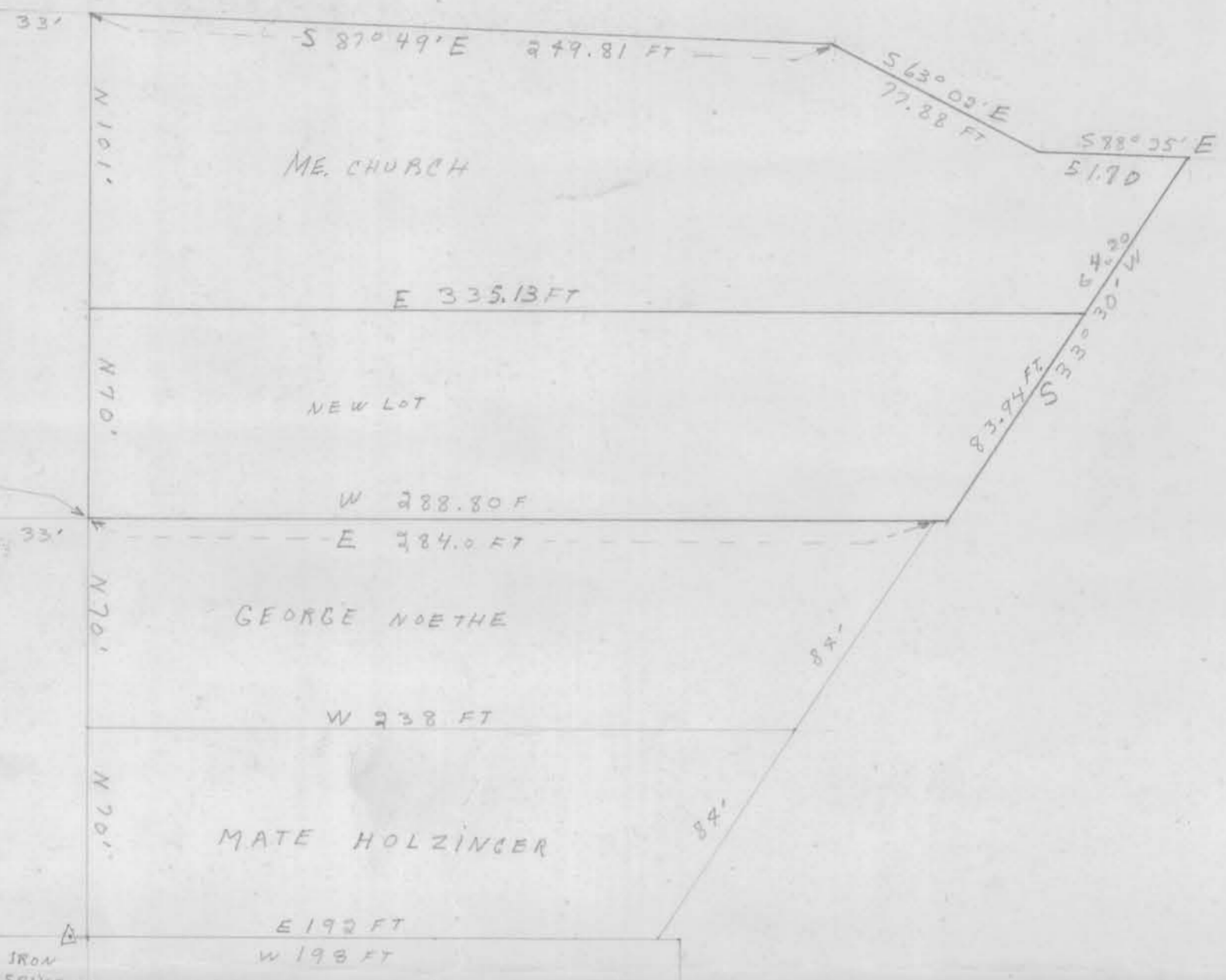
SCALE 1" = 50 FT.

IRON PIPE

214.50 FT

CENTER OF STATE HIGHWAY '35'

HROMADKA



PT. 1156.2 FT. N. AND 33.0 FT. E. OF THE CENTER OF SEC 4 T5N R5W

IRON STRIKE IN SIDEWALK

P.G. MILL LOT (ED. WISEMAN)

STONE MONUMENT AT CENTER OF SEC 4, T5N, R5W, GRANT COUNTY, WIS.