

South 2702.70'
North-South 1/4 Sec. Line



Center of Sec. 26,
T.1 N., R.2 W. of
4 P.M.

2,643.47'
West 2,591.47' Section Line

Point of Beginning



North East 1/4 of Sec. 26, T.1 N.,
R.2 W. of 4th P.M.

Total Area within red lines = 103.616 Acres
Total Area in Highway R.O.W. within same red lines area = 5.002 Acres
Net Area = 98.614 Acres

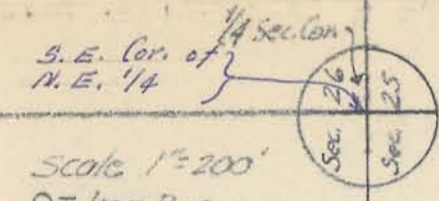
R.O.W. Line
Right-of-Way of State of Wisconsin
24' Wide Blacktop Pavement
R.O.W. Line

Curve Data on
D.T. = 12.38
L = 634.2
R = 5,130.0

Weber to May to Friedlein.
270-569
11-4-1947

FROM
BARTELS, McMANAY & COMPANY
CONSULTING ENGINEERS & SURVEYORS
2165 Main Street
DUBUQUE, IOWA

GCA 1176



Scale 1"=200'
O = Iron Pipe
O = Iron Pipe & Steel Fence Post
R = Recorded Distance
A = Actual Distance
C.L. = Center Line
R.R. = Railroad Spike
R.O.W. = Right-of-Way
H.S. = Highway Station
P.C. = Point of Curve
P.T. = Point of Tangent
- - - = Existing Fence

Exhibit C

Sheet 2 of 2