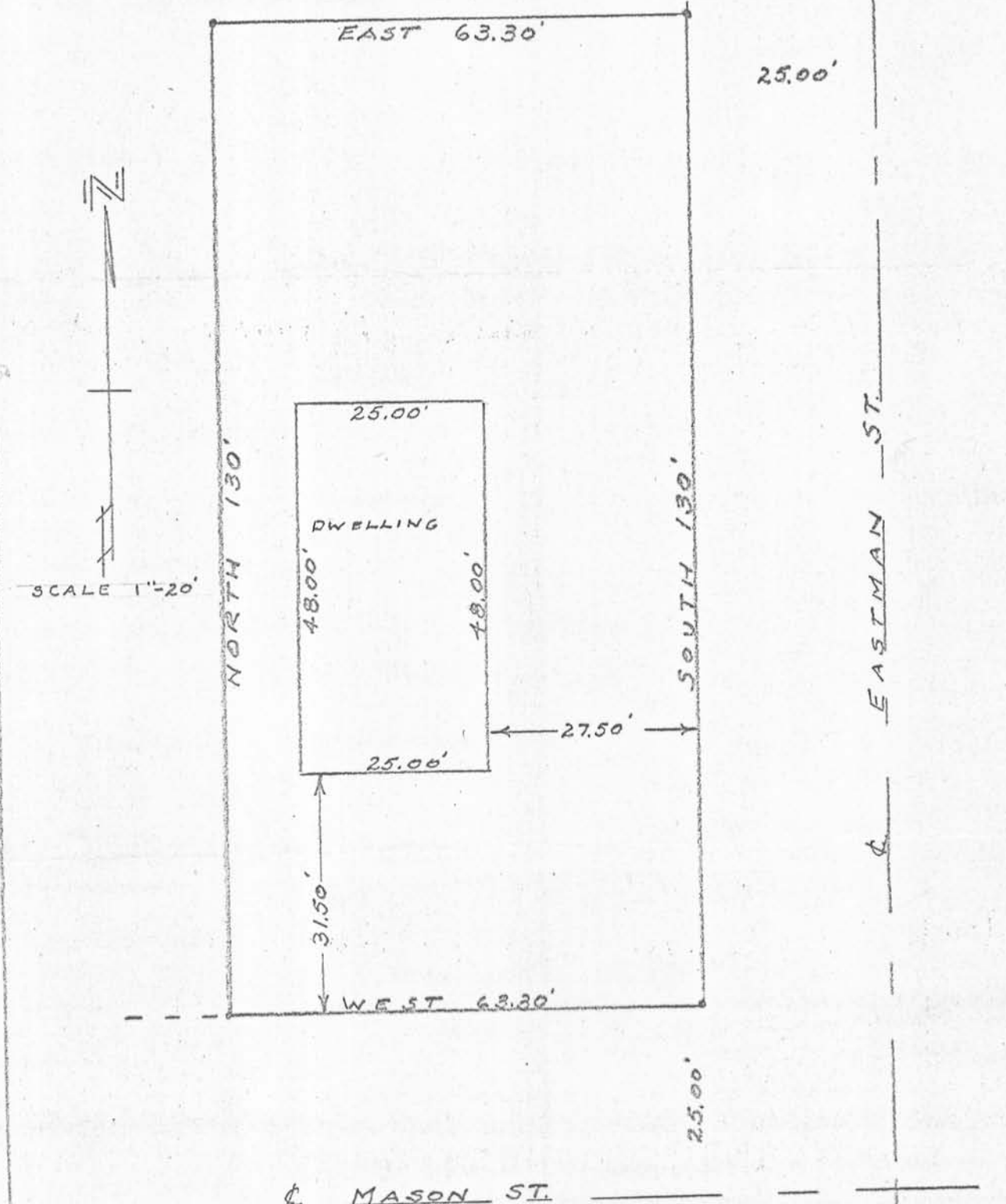


LOT 1, BLOCK "B"  
 MITCHELL ADDITION  
 CITY OF PLATTEVILLE,  
 GRANT COUNTY, WIS,



I certify that I surveyed the above described property and that the above plat is an accurate survey and a true representation thereof and correctly shows the exterior boundary lines and location of buildings on said property and the correct measurements thereof.

4/1/66

*D.C. Dixon*  
 D.C. Dixon

S-304