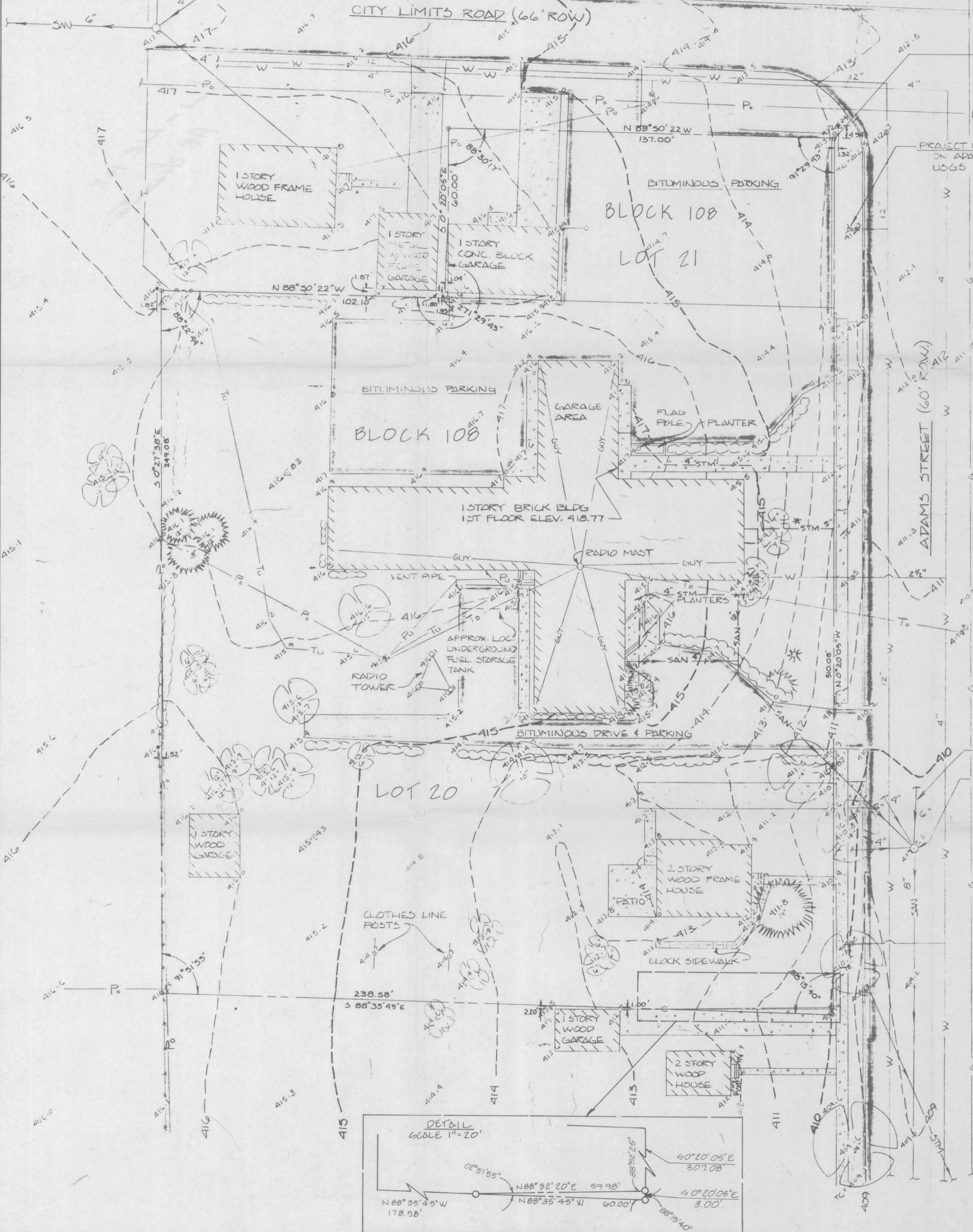


MANHOLE RIM ELEV. 417.0  
 N. INV. 410.1  
 NE. INV. 410.2  
 SE. INV. 410.0  
 W. INV. 409.9

N.E. CORNER OF BLOCK 108 OF THE  
 ASSESSMENT PLAT OF THE CITY OF  
 LANCASTER, WISCONSIN, AS RECORDED  
 IN VOLUME 1, PAGE 34 OF THE REGISTER  
 OF DEEDS OFFICE AT GRANT COUNTY, WISCONSIN.



- LEGEND**
- ===== BUILDING LINE
  - 410.4 SPOT ELEVATION
  - - - - - EXISTING CONTOUR
  - =====  
INLET
 CURVE LINE (WITH INLET)
  - TC=412.1 TOP OF CURVE ELEVATION
  - =====  
CONCRETE SURFACE
  - =====  
BITUMINOUS SURFACE
  - =====  
GRAVEL SURFACE
  - MANHOLE
  - Y HYDRANT
  - ⊗ SHUT-OFF VALVE
  - △ TRAVERSE POINT
  - LIGHT POLE (WITH RISER)
  - ⊗ POWER POLE (WITH RISER)
  - P.T.O. POWER & TELEPHONE OVERHEAD
  - P.T.U. POWER & TELEPHONE UNDERGROUND
  - - - - - SANITARY SEWER WITH FLOW DIRECTION
  - W 4" WATER LINE WITH PIPE DIAMETER
  - G GAS LINE
  - DECIDUOUS TREE WITH TRUNK DIAMETER
  - CONIFEROUS TREE WITH TRUNK DIAMETER
  - DECIDUOUS SHRUBS
  - CONIFEROUS SHRUBS
  - - - - - FENCE LINE
  - INV. INVERT
  - ROW. RIGHT OF WAY
  - - - - - STM STORM SEWER WITH FLOW DIRECTION
  - - - - - PROPERTY LINE
  - IRON PIPE FOUND
  - PROPERTY IRON SET

**LEGAL DESCRIPTION**

LEGAL DESCRIPTION FOR TRIANGULAR PARCEL OF LAND TO BE CONVEYED FROM THE GRANT COUNTY SHERIFF'S DEPARTMENT PROPERTY BY QUITCLAIM DEED.

A PARCEL OF LAND LOCATED IN THE NE 1/4 OF NE 1/4 OF SECTION 3, T 4N, R 3 W OF THE 4TH P.M. GRANT COUNTY, WISCONSIN MORE FULLY DESCRIBED AS FOLLOWS:

COMMENCING AT THE NE CORNER OF BLOCK 108 OF THE ASSESSMENT PLAT OF THE CITY OF LANCASTER, WISCONSIN AS RECORDED IN VOLUME 1, PAGE 34 IN THE OFFICE OF THE REGISTER OF DEEDS OF GRANT COUNTY, WISCONSIN; THENCE S 0°20'05" E, ALONG THE WEST RIGHT OF WAY LINE OF ADAMS STREET, 60 FEET WIDE, A DISTANCE OF 307.08 FEET TO THE POINT OF BEGINNING OF THIS DESCRIPTION; THENCE S 0°20'05" E, A DISTANCE OF 3.00 FEET; THENCE N 88°35'45" W, A DISTANCE OF 60.00 FEET; THENCE N 88°32'20" E, A DISTANCE OF 59.98 FEET TO THE POINT OF BEGINNING.

SAID PARCEL CONTAINS 90 SQUARE FEET.

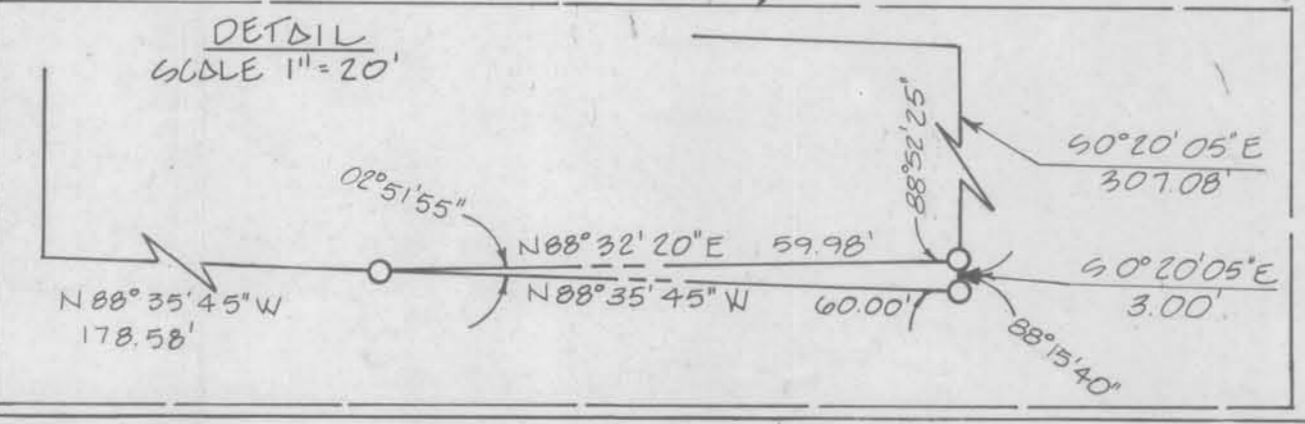
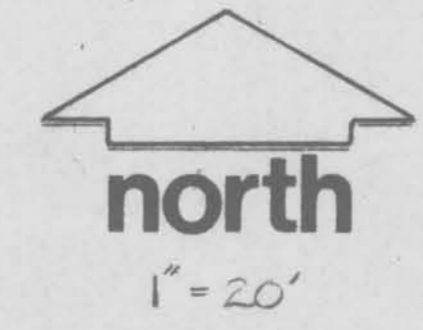
J. ROBERT W. TREFE, CERTIFY THAT I HAVE SURVEYED THE PARCEL OF LAND SHOWN, AND THAT THIS PLAT IS A CORRECT REPRESENTATION OF THE EXTERIOR BOUNDARIES OF THE LAND SURVEYED.

*Robert W. Trefe*

REGISTERED SURVEYOR #5-976  
 DATE 3-10-81



- NOTES**
- 1) CONTOUR INTERVAL IS 1 (ONE) FOOT
  - 2) BENCHMARK IS TOP NUT ON HYDRANT ON ADAMS STREET ELEV. 414.60 U.S.G.S. DATUM.
  - 3) SEWER AND WATER INFORMATION WAS OBTAINED FROM THE CITY OF LANCASTER
  - 4) GAS LINE INFORMATION WAS OBTAINED FROM WISCONSIN GAS COMPANY
  - 5) TELEPHONE INFORMATION AND UNDERGROUND POWER INFORMATION WAS OBTAINED FROM FARMERS TELEPHONE COMPANY.
  - 6) UTILITY INFORMATION WAS FIELD VERIFIED BY WARZYN ENGINEERING 3/21/79.
  - 7) TOPOGRAPHIC INFORMATION WAS OBTAINED BY WARZYN ENGINEERING 3/21/79.
- \* B) STORM SEWER AS SHOWN ON CONTRACTORS PLAN.



NO.	BY	DATE	REVISION	APPD.
GRANT COUNTY SHERIFF'S FACILITY				
PART OF NE 1/4, SECTION 3, T 4N, R 3 W, 4TH P.M. GRANT COUNTY, WISCONSIN				
PREPARED FOR GRANT COUNTY BOARD OF SUPERVISORS				
<b>WARZYN ENGINEERING INC</b>		DRAWN JLC, CPB	SCALE 1" = 20'	SHEET 1 OF 1
CHECKED B.D. NEW	DATE 3/10/81	DRAWING NO. <b>C9756-1</b>		
APPROVED <i>Robert W. Trefe</i>	REFERENCE CB323	PRINTED MAR 10 1981		