



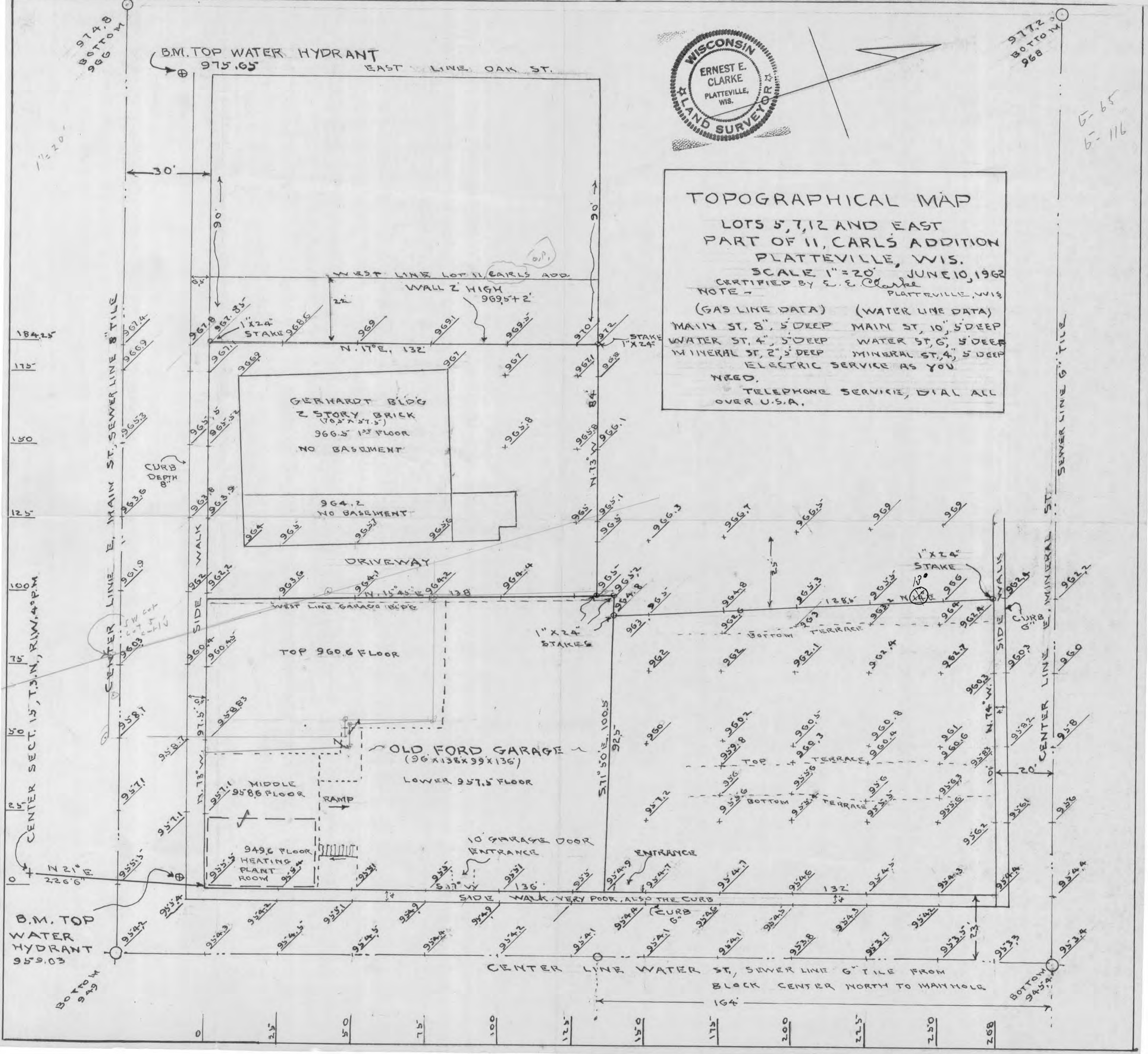
# TOPOGRAPHICAL MAP

LOTS 5, 7, 12 AND EAST PART OF 11, CARL'S ADDITION  
PLATTEVILLE, WIS.

SCALE 1"=20' JUNE 10, 1962

CERTIFIED BY E. E. Clarke  
NOTE - PLATTEVILLE, WIS.

(GAS LINE DATA) (WATER LINE DATA)  
MAIN ST, 8", 5' DEEP MAIN ST, 10", 5' DEEP  
WATER ST, 4", 5' DEEP WATER ST, 6", 5' DEEP  
MINERAL ST, 2", 5' DEEP MINERAL ST, 4", 5' DEEP  
ELECTRIC SERVICE AS YOU  
NEED.  
TELEPHONE SERVICE, DIAL ALL  
OVER U.S.A.



5-65  
6-116

65



S. LINE E. MINERAL ST. 101' LOT LINE, N. 74° W.

WEST LOT LINE 128.5' 125'

S. 13° W.

80'

MAIN BUILDING 125' X 80'  
(KROGER MARKET)

125'

LOAD RAMP WITH ROOF

OPEN SPACE

LOADING RAMP

WALK AND OVER COVER WALK

LOT LINE N. 73° W. 84'

80'

ST. LOT LINE N. LINE WATER

268'

S. 17° W.

PARKING AREA

N. 17° E. WEST LOT LINE 132'

N. 73° W.

184.5'

N. LINE E. MAIN ST LOT LINE

LOTS 5, 7, 12 CARLS ADDITION AND E. PART OF LOT 11, ORIGINAL PLAT, PLATTEVILLE, GRANT CO, WIS.

SCALE 1"=20' APRIL 20, 1963, BY E. E. Clarke