



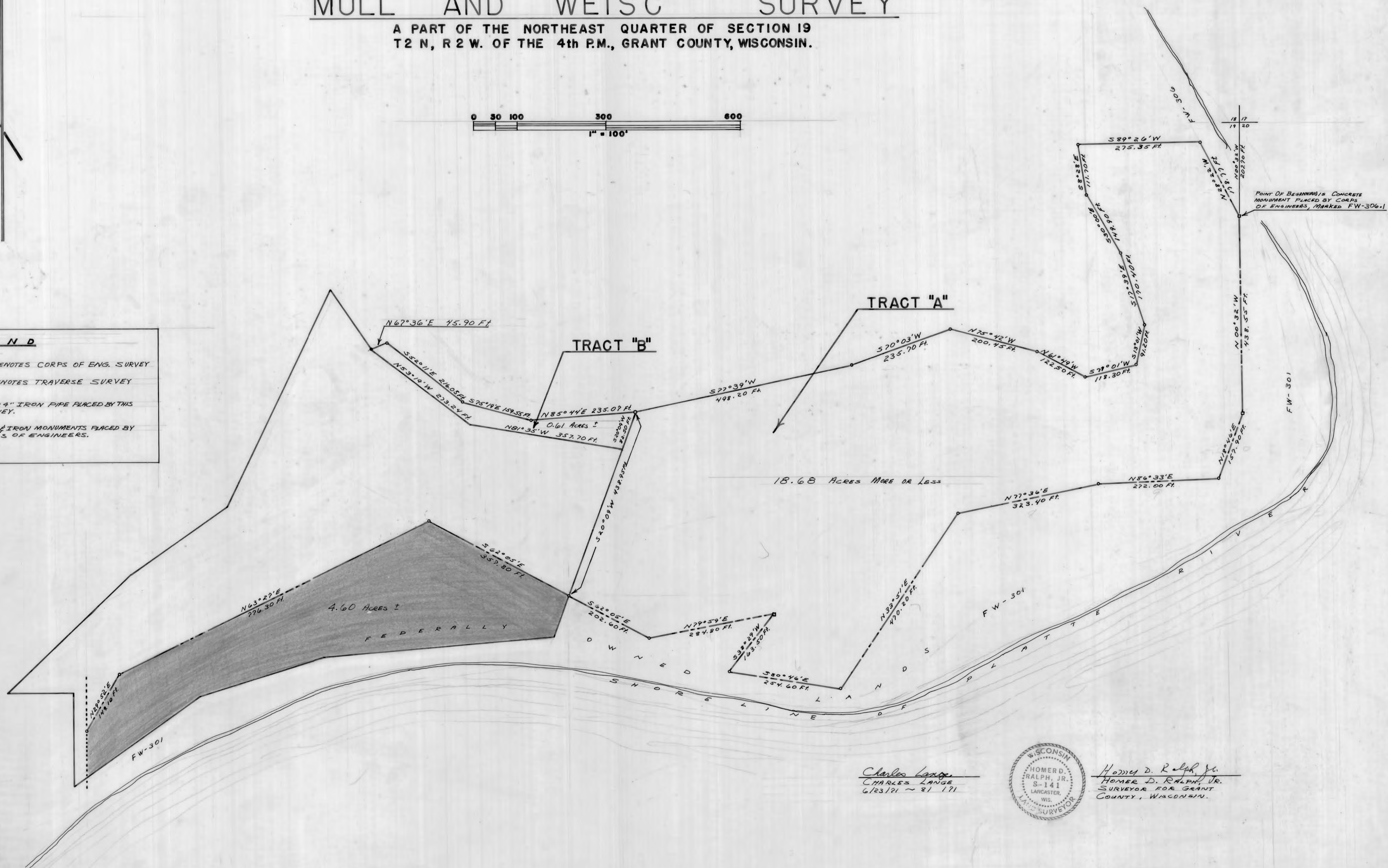
MULL AND WEISC SURVEY

A PART OF THE NORTHEAST QUARTER OF SECTION 19
T2 N, R2 W. OF THE 4th P.M., GRANT COUNTY, WISCONSIN.

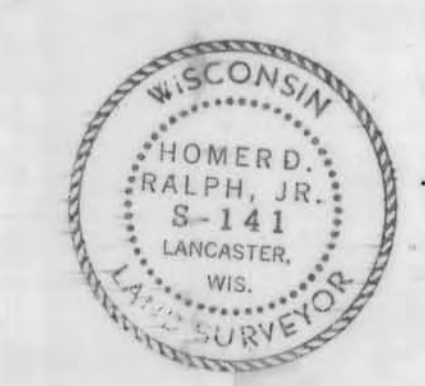


LEGEND

- DENOTES CORPS OF ENGS. SURVEY
- DENOTES TRAVERSE SURVEY
- 1" X 24" IRON PIPE PLACED BY THIS SURVEY.
- CONCRETE & IRON MONUMENTS PLACED BY THE CORPS OF ENGINEERS.



Charles Lange
CHARLES LANGE
6/23/21 ~ 8/1/21



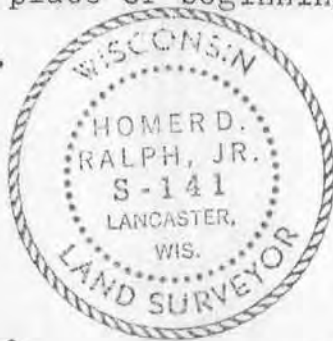
Homer D. Ralph, Jr.
HOMER D. RALPH, JR.
SURVEYOR FOR GRANT COUNTY, WISCONSIN.

MULL AND WEISC SURVEY

DESCRIPTION FOR TRACT "A"

A part of the Northeast Quarter of Section 19, T 2 N, R 2 W. of the 4th P.M., Grant County, Wisconsin, described as follows to-wit:

Begin at a standard concrete monument placed by the Corps of Engineers and stamped FW-306.1, which is South 00° 32' East 207.70 feet from the Northeast corner of said Section 19; thence North 28° 22' West 178.77 feet; thence South 89° 26' West 275.35 feet; thence South 08° 28' East 111.70 feet; thence South 30° 00' East 149.90 feet; thence South 17° 39' East 170.40 feet; thence South 13° 01' West 91.20 feet; thence South 77° 01' West 118.30 feet; thence North 61° 49' West 122.50 feet; thence North 75° 42' West 200.45 feet; thence South 70° 03' West 235.70 feet; thence South 77° 39' West 498.20 feet; thence South 20° 09' West 438.95 feet; thence South 62° 05' East 202.60 feet; thence North 29° 59' East 284.80 feet; thence South 38° 29' West 163.50 feet; thence South 80° 46' East 254.60 feet; thence North 33° 51' East 470.20 feet; thence North 77° 36' East 323.40 feet; thence North 86° 33' East 272.00 feet; thence North 18° 46' East 157.90 feet; thence North 00° 32' West 438.55 feet to the place of beginning. Containing 18.68 acres more or less.



Charles Lange
Charles Lange
6/23/71 - 8/23/71

Homer D. Ralph, Jr.
Homer D. Ralph, Jr.
Surveyor for Grant
County, Wisconsin

MULL AND WEISC SURVEY

DESCRIPTION FOR TRACT "B"

A part of Government Lot 2 in Section 19, T 2 N, R 2 W. of the 4th P.M., Grant County, Wisconsin, described as follows, to-wit:

Begin at a standard concrete monument placed by the Corps of Engineers and stamped FW-306.1, which is South 00° 32' East 207.70 feet from the Northeast corner of said section 19; thence South 442.82 feet and West 1363.60 feet to the place of beginning; thence South 20° 09' West 82.50 feet; thence North 81° 35' West 357.70 feet; thence North 53° 19' West 273.24 feet; thence North 67° 36' East 45.90 feet; thence South 52° 11' East 216.05 feet; thence South 75° 19' East 159.55 feet; thence North 85° 44' East 235.07 feet to the point of beginning. Containing 0.61 acres more or less.



Charles Lange
Charles Lange
6/23/71-8/24/71

Homer D. Ralph, Jr.
Homer D. Ralph, Jr.,
Surveyor for Grant
County, Wisconsin.