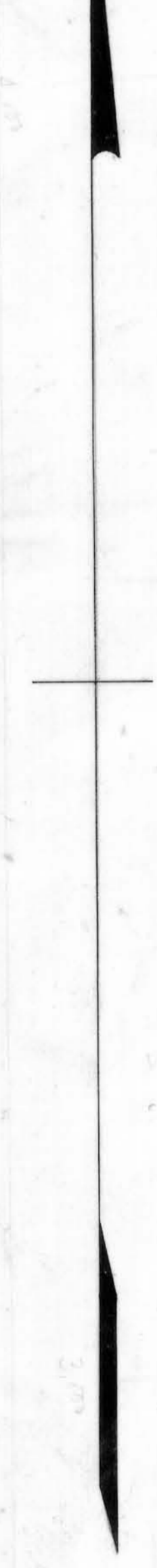
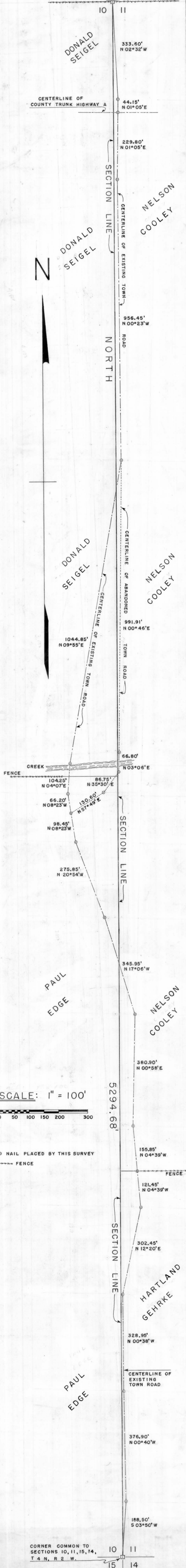
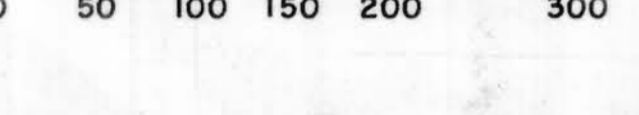


CORNER COMMON TO SECTIONS 3, 2, 10, 11, T 4 N., R 2 W.



SCALE: 1" = 100'



○ NAIL PLACED BY THIS SURVEY
--- FENCE

CORNER COMMON TO SECTIONS 10, 11, 15, 14, T 4 N., R 2 W.

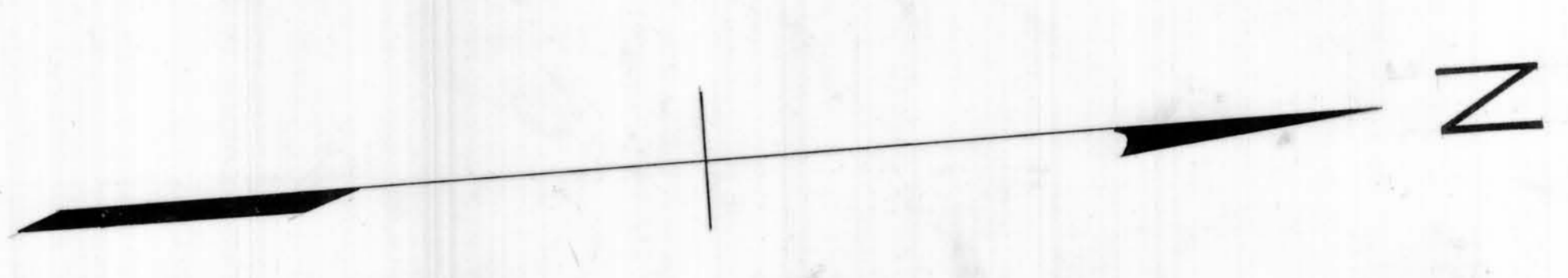
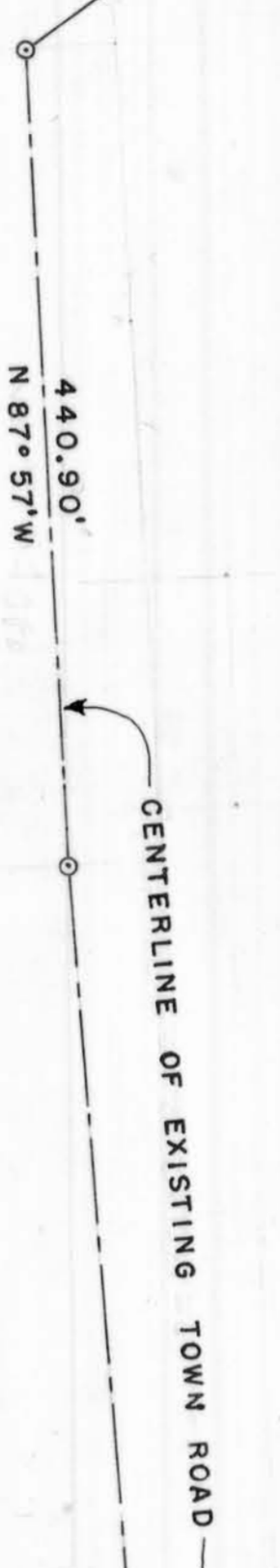
SOUTH QUARTER CORNER OF SECTION 10, T 4 N., R 2 W. WOODEN FENCE POST

2665.36
S 88° 43' E

COMMON CORNER TO SECTIONS 10, 11, 14, 15, T 4 N., R 2 W.

2659.03
S 88° 43' E

SOUTH QUARTER CORNER OF SECTION 11, T 4 N., R 2 W. ROUND STEEL POST IN CONCRETE



458.60' N 89° 35' W

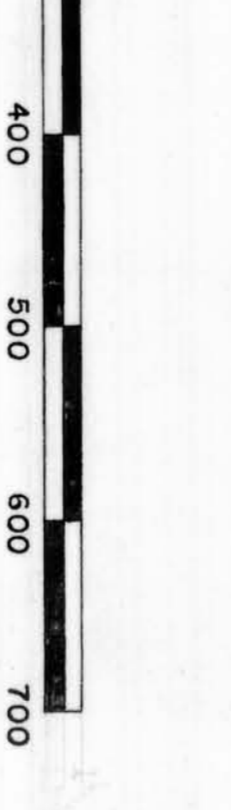
148.80' N 89° 31' W

124.55' N 89° 16' W

700.00' S 00° 48' W

620.15' S 00° 50' W

SCALE: 1" = 100'



LEGEND:

○ NAIL PLACED BY THIS SURVEY
--- FENCE



Homer D. Ralph, Jr.
HOMER D. RALPH, JR.
SURVEYOR FOR GRANT
COUNTY, WISCONSIN.
6/8/75 - 6/18/75