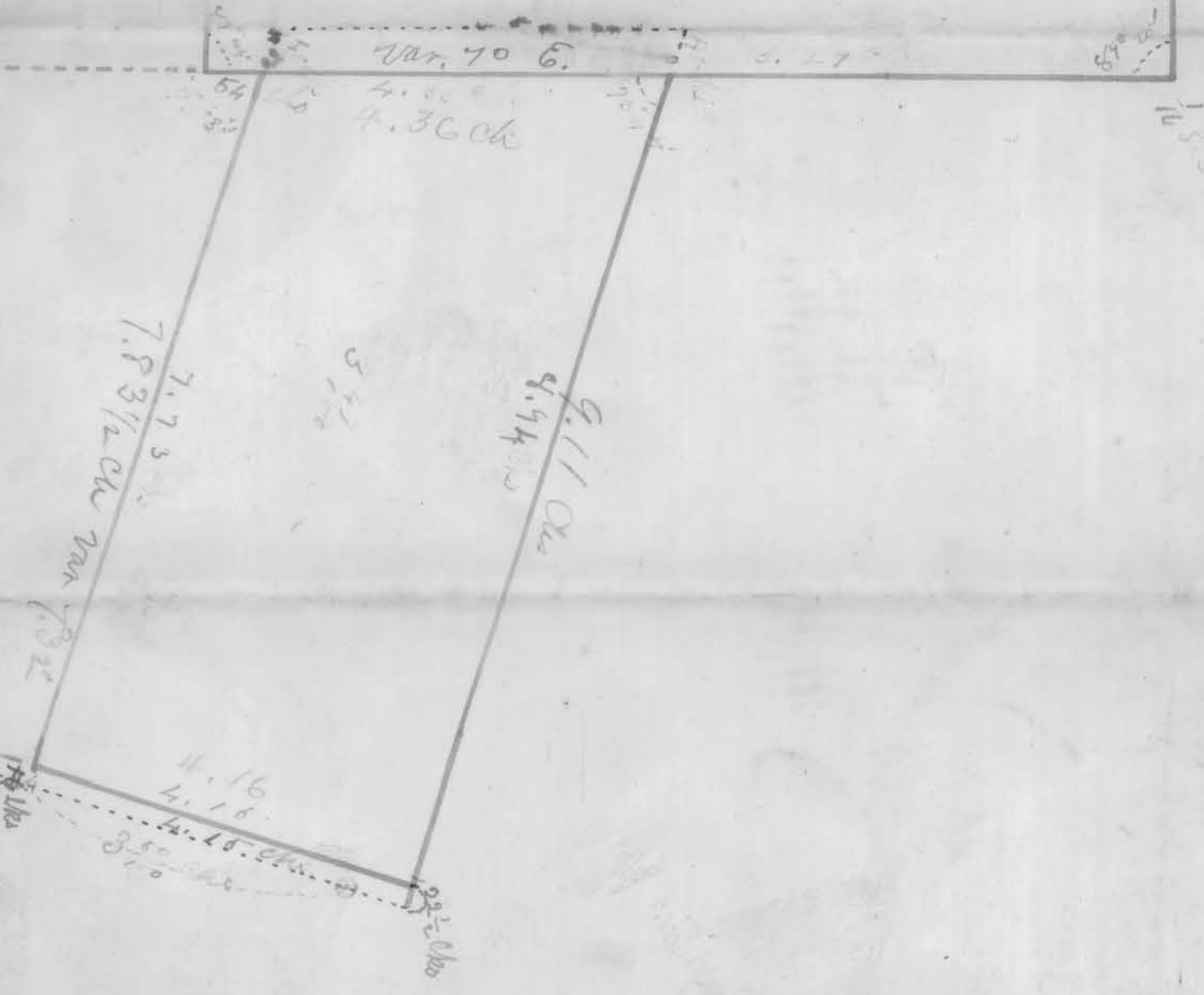


State of Ohio }  
County of }  
J. Lewis Thompson

Survey in and for the County of }  
State of Ohio }  
When the above plat of }  
is from lots 8 north of Range 1 west of }  
the base of the }  
and contains of }  
and more or less }  
of }  
for in the deed

Given under my hand at Frankfort Ohio Sept 1844

Charles J. ...  
County ...



N. 17 1/2° E var 70 32 8.51 Ch  
var 70 32 8.51 Ch  
var 70 32 8.51 Ch