

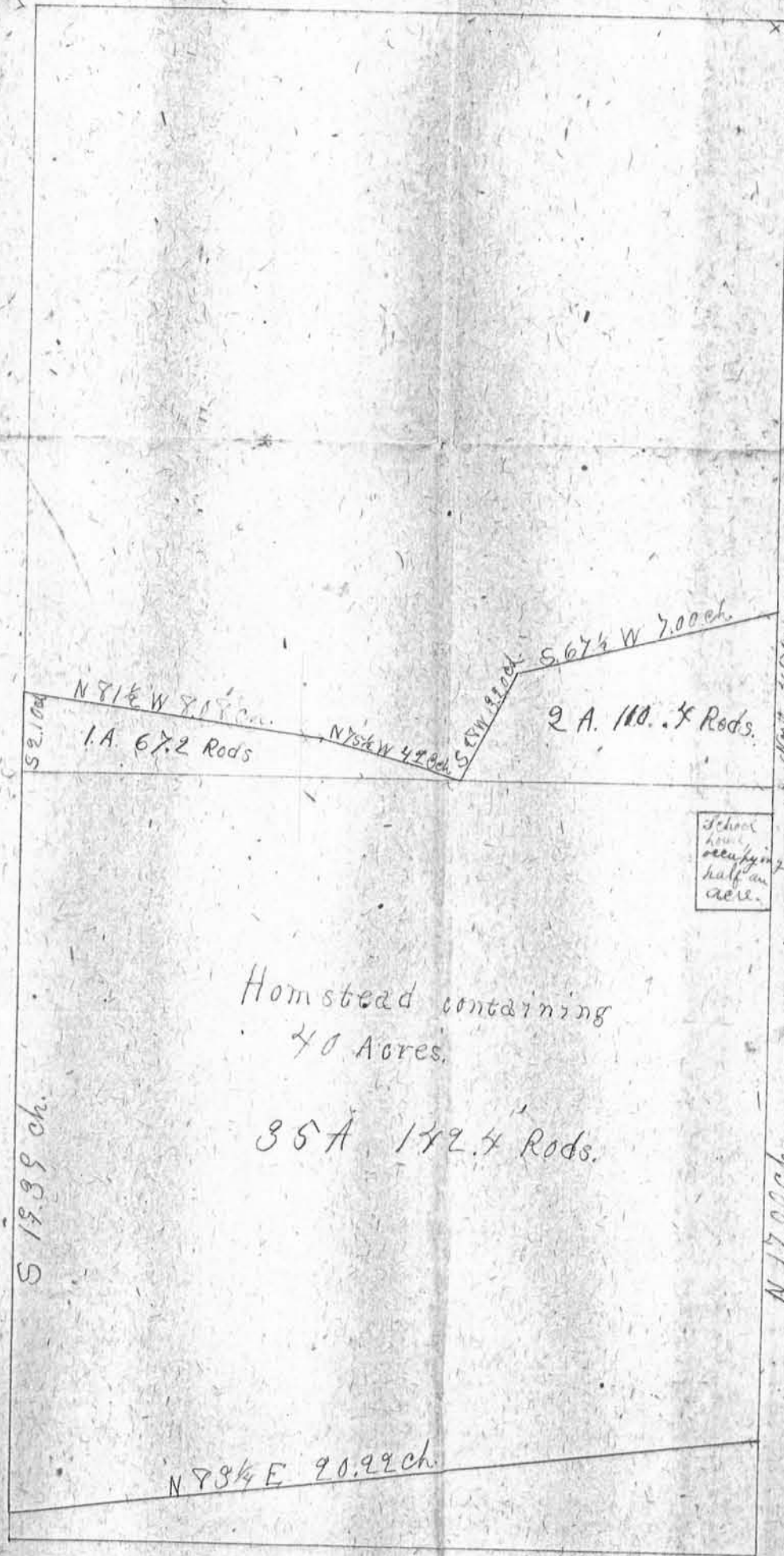
I hereby certify that the above is a true plat of survey of Homestead, on E. 1/2 of N. W. 1/4 of Section 16 T. 2 N., R. 2 W., under the direction of commissioners appointed for that purpose, commencing on east side of said tract of land at the 1/4 Section corner - thence north 7.50 ch. thence S 76 1/2 W. 7.00 ch. - thence S 78 W. 3.20 ch. - thence N 75 1/2 W. 4.23 ch. - thence N 81 1/2 W. 8.08 ch. - thence S 2.10 ch. to 1/4 Section corner on west side of said tract of land - thence S 19.39 ch. thence N 83 1/2 E. 20.22 ch. thence N. 17.00 ch. to place of beginning, containing forty acres.

H. A. W. McNair, Surveyor.

North

West

East



Homestead containing 40 Acres.

35 A. 142.4 Rods.

N 71 1/2 W 8.17 ch.

N 78 1/2 W 4.23 ch.

S 76 1/2 W 7.00 ch.

S 19.39 ch.

N 17.00 ch.

N 83 1/2 E 20.22 ch.

South

Surveyor's fee \$3.00

151