

207-267

Center Corner Sec. 23. T. 5N. R. 5W. 4th P.M.
 NE Corner NW 1/4 of SE 1/4 Sec. 23
 1/4 Sec. line 19.78 chains

NW 1/4 of SE 1/4 Sec. 23
 T. 5N., R. 5W.
 40.20 Acs.

certified to 8/16/66
 Dixon Survey

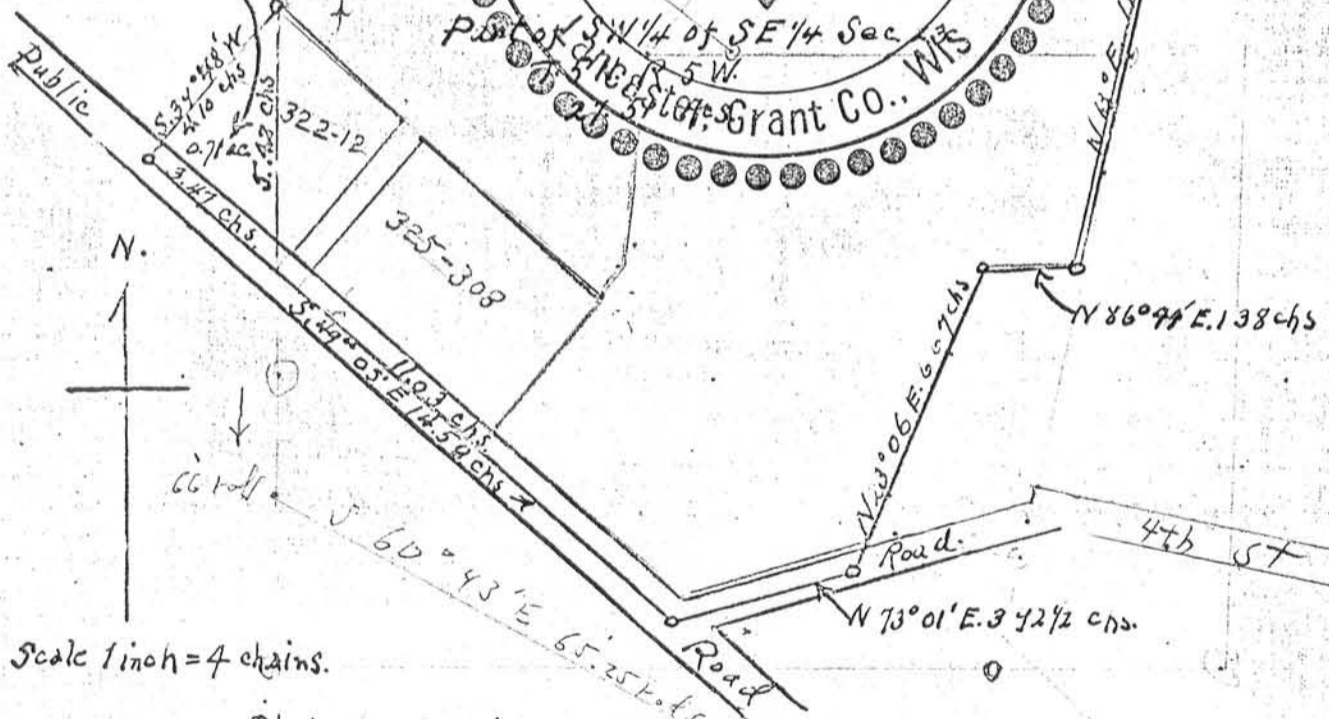
Part of SE 1/4 of SW 1/4 Sec. 23. 0.71 Acs.

South 26.47 chains.
 20.07 chs.

1/8 Sec. line 20.00 chs.

SE Corner NW 1/4 of SE 1/4 Sec. 23. T. 5N. R. 5W.

East 84 links



Scale 1 inch = 4 chains.

Plot showing land in NW 1/4 of SE 1/4 and SE 1/4 of SW 1/4, Sec. 23. T. 5N. R. 5W. Grant County, Wisconsin, Surveyed June 9th 1920, for Mr. Fred Cooper.

The areas are as follows:

| | |
|---------------------|--------------------|
| N. W 1/4 of SE 1/4 | 40.20 Acres |
| Part of SW 1/4 " " | 27.51 " |
| " " SE 1/4 " SW 1/4 | 0.71 " |
| Total | 68.42 Acres |

Galena, Ill. 6/18/20.

J. C. Scott.