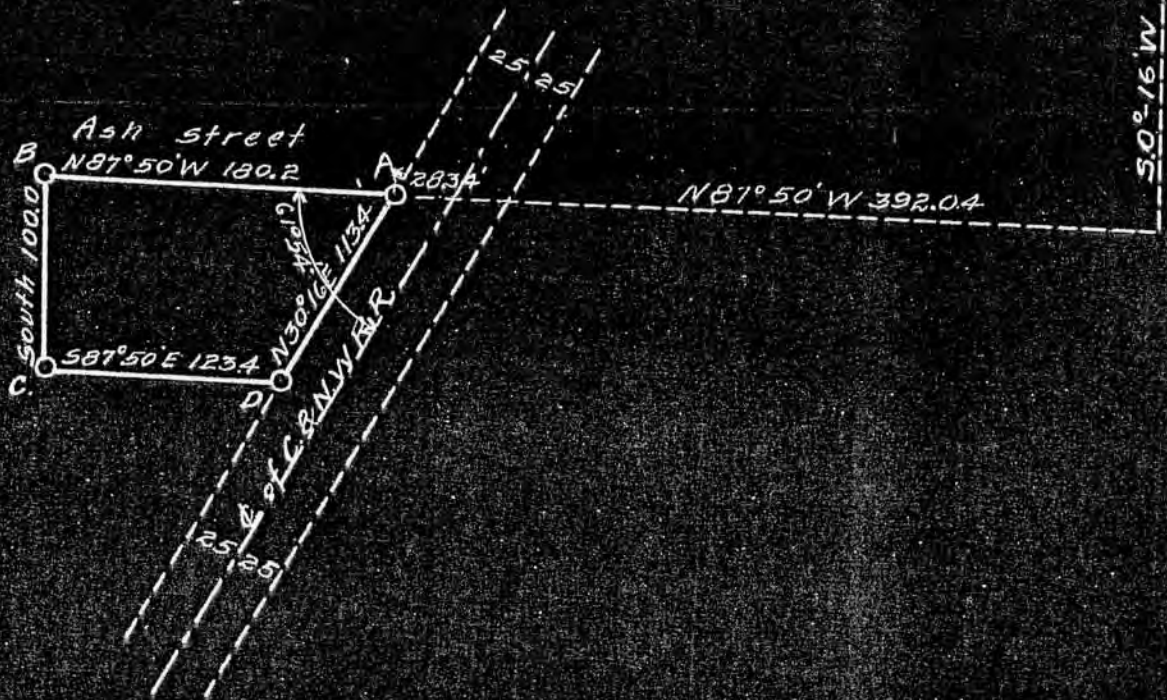


Surveyed June 29 & 30 - 1925
 Mike Kiley,
 John T. Buser
 Co. Surveyor.

587°50'E 753.06'

At N.E. Corner of N.W. 1/4 of N.E. 1/4 of Sec. 3 T4N R3W of the 4th P.M. drove a piece of Gas Pipe 2 1/2 feet long x 1" in ϕ below surface of ground. From this corner the East side of the stand pipe bears S. 28° 45' W. The N.W. corner of the Canning Factory bears S. 24° 50' W 146.7 feet. The N.W. corner of cellar wall of house now occupied by Mrs. Damer bears S. 50° 38' E 104.0 feet.

North 5371
 This line used as base line for direction



- At A Gas pipe 1.6ft. long 1" ϕ 2.5 feet N.E. of telephone pole.
- At B " " 1.4 feet long 1" ϕ 7.6 ft. N.E. of N.E. corner of barn.
- At C " " 1.6 feet x 3/4" ϕ
- At D " " 16 inches long 3/8" ϕ .

Description:- Commencing at the N.E. corner of N.W. 1/4 of N.E. 1/4 of Section 3 T4N R3W of the 4th P.M. in the City of Lancaster, Grant Co., Wis., thence S. 0° 16' W 590.7 feet, thence N 87° 50' W 392.04 feet to place of beginning; thence N 87° 50' W 180.2 feet; thence South 100.0 feet; thence S 87° 50' E 123.4 feet; thence N 30° 16' E 113.4 feet to place of beginning, iron stakes are driven at each corner of above described tract. (see sketch).

Dated at Platteville Wis. July 1, 1925

John T. Buser
 County Surveyor

17 X = 33.10

