

Record of Survey.

OF SECTION, QUARTER SECTION AND QUARTER QUARTER SECTION CORNERS

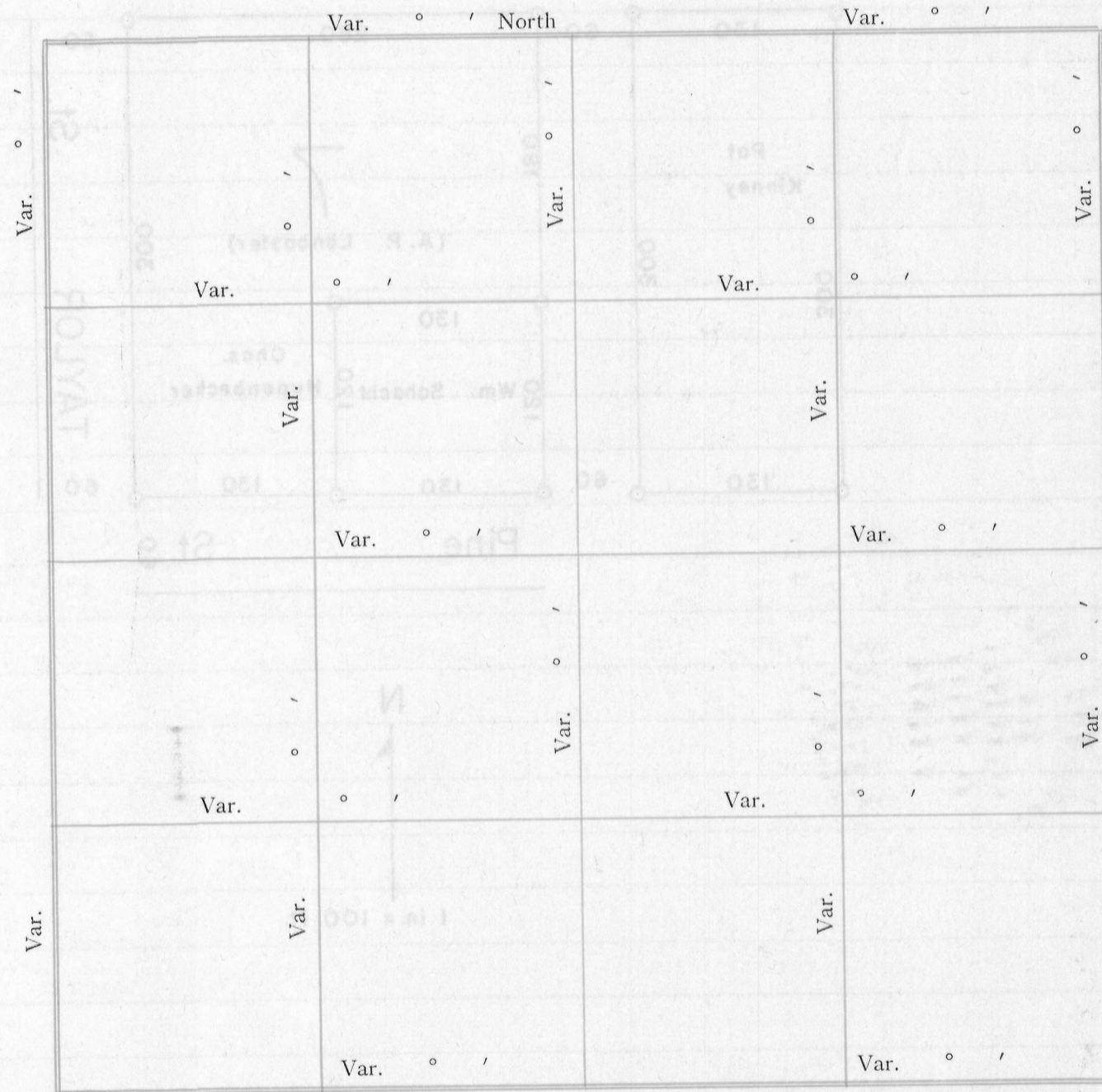
Form 1742 H. C. MILLER CO., MILWAUKEE

Township 4, North of Range 3 W of 4 Principal Meridian as presented by the courses and distances on the following plat, and annexed field-notes of survey:

Established the center of the section at the point of intersection of STRAIGHT quarter lines.

Established all quarter-quarter corners upon the section boundary at proportional distances between known section and quarter section corners, according to the original field-notes of the Government survey.

Established all lost corners at proportionate distances between known corners, according to the original field notes of the Government survey.



Plat of Section 3, Township 4 North, Range 3 W of 4 Principal Meridian Scale 80 chains to 6 inches. The figures in red ink are the lengths of the lines as stated in the field-notes of the Government survey.

Declination of the Magnetic Meridian from the True Meridian.....

Surveyed and sub-divided May 1 A. D. 1952, in accordance with the State Laws and Instructions of the Commissioner of the General Land office, and recorded on pages of Register in the County Clerk's office.

Witness my hand this 21st day of May A. D. 1952

H. D. Ralph SURVEYOR.

see reverse side

GOVERNMENT CORNERS				Subdivision Corners													
No.	Bearing Trees	In. Dia.	Courses they bear	Links Distant	No.	Bearing Trees	In. Dia.	Courses they bear	Links Distant	Bearing Trees	In. Dia.	Courses they bear	Links Distant	Bearing Trees	In. Dia.	Courses they bear	Links Distant
1.					1.												
2.					2.												
3.					3.												
4.					4.												
5.					5.												
6.					6.												
7.					7.												
8.					8.												
					9.												
					10.												
					11.												
					12.												
					13.												
					14.												
					15.												
					16.												
					17.												

NAMES OF SWORN ASSISTANTS

CHAINMEN	FLAGMEN	AXMEN
<u>Wm. Schacht</u>		

DESCRIPTION

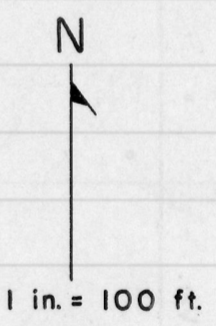
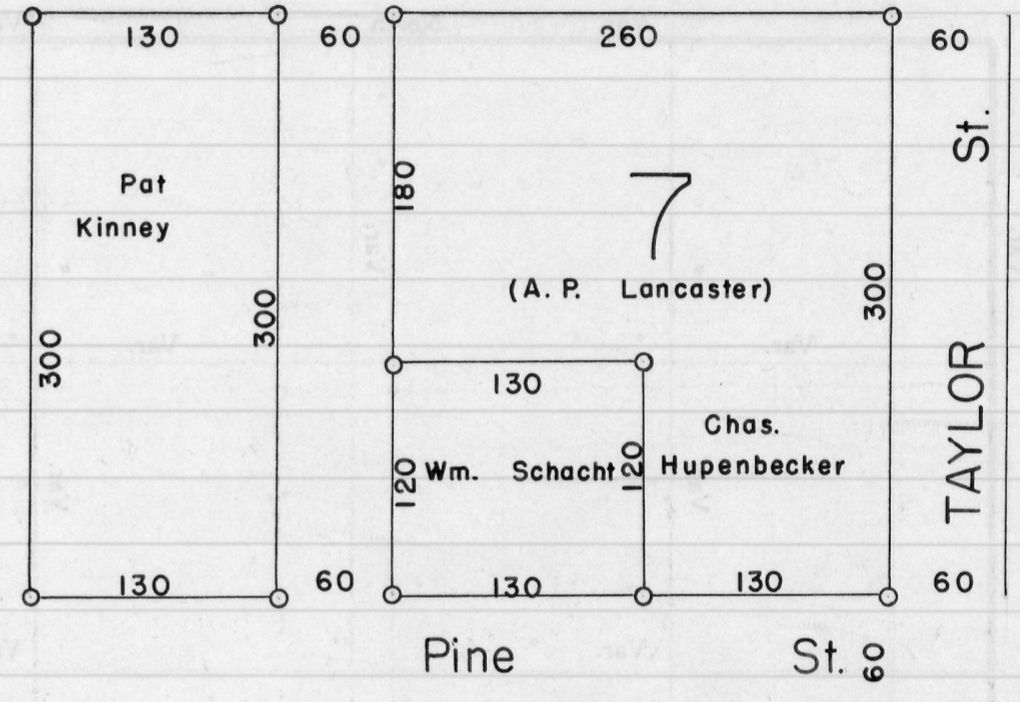
OF SECTION, QUARTER SECTION AND QUARTER QUARTER SECTION CORNERS

Record of Survey

OVER

Section	Quarter Section	Quarter Quarter Section	Distance	Direction	Remarks
1	1	1	130	W	Pat Kinney
1	1	2	130	W	Pat Kinney
1	1	3	130	W	Pat Kinney
1	1	4	130	W	Pat Kinney
1	2	1	130	W	Pat Kinney
1	2	2	130	W	Pat Kinney
1	2	3	130	W	Pat Kinney
1	2	4	130	W	Pat Kinney
1	3	1	130	W	Pat Kinney
1	3	2	130	W	Pat Kinney
1	3	3	130	W	Pat Kinney
1	3	4	130	W	Pat Kinney
1	4	1	130	W	Pat Kinney
1	4	2	130	W	Pat Kinney
1	4	3	130	W	Pat Kinney
1	4	4	130	W	Pat Kinney
2	1	1	130	W	Pat Kinney
2	1	2	130	W	Pat Kinney
2	1	3	130	W	Pat Kinney
2	1	4	130	W	Pat Kinney
2	2	1	130	W	Pat Kinney
2	2	2	130	W	Pat Kinney
2	2	3	130	W	Pat Kinney
2	2	4	130	W	Pat Kinney
2	3	1	130	W	Pat Kinney
2	3	2	130	W	Pat Kinney
2	3	3	130	W	Pat Kinney
2	3	4	130	W	Pat Kinney
2	4	1	130	W	Pat Kinney
2	4	2	130	W	Pat Kinney
2	4	3	130	W	Pat Kinney
2	4	4	130	W	Pat Kinney
3	1	1	130	W	Pat Kinney
3	1	2	130	W	Pat Kinney
3	1	3	130	W	Pat Kinney
3	1	4	130	W	Pat Kinney
3	2	1	130	W	Pat Kinney
3	2	2	130	W	Pat Kinney
3	2	3	130	W	Pat Kinney
3	2	4	130	W	Pat Kinney
3	3	1	130	W	Pat Kinney
3	3	2	130	W	Pat Kinney
3	3	3	130	W	Pat Kinney
3	3	4	130	W	Pat Kinney
3	4	1	130	W	Pat Kinney
3	4	2	130	W	Pat Kinney
3	4	3	130	W	Pat Kinney
3	4	4	130	W	Pat Kinney
4	1	1	130	W	Pat Kinney
4	1	2	130	W	Pat Kinney
4	1	3	130	W	Pat Kinney
4	1	4	130	W	Pat Kinney
4	2	1	130	W	Pat Kinney
4	2	2	130	W	Pat Kinney
4	2	3	130	W	Pat Kinney
4	2	4	130	W	Pat Kinney
4	3	1	130	W	Pat Kinney
4	3	2	130	W	Pat Kinney
4	3	3	130	W	Pat Kinney
4	3	4	130	W	Pat Kinney
4	4	1	130	W	Pat Kinney
4	4	2	130	W	Pat Kinney
4	4	3	130	W	Pat Kinney
4	4	4	130	W	Pat Kinney

Established the center of the section at the point of intersection of straight quarter lines. Established the quarter corners upon the section boundary at proportional distances between known section and quarter section corners, according to the original field notes of the Government survey. Contained all lost corners at proportional distances between known corners, according to the original field notes of the Government survey.



NAMES OF SWORN ASSISTANTS

Witness my hand this 1st day of May, 1922, at the County Clerk's office.

Surveyed and subdivided North Range, T. 24 N., R. 10 W., according to the original field notes of the Government survey, and recorded on pages 100 and 101 of the County Clerk's office.

Witness my hand this 1st day of May, 1922, at the County Clerk's office.