



# Record of Survey.

# DESCRIPTION

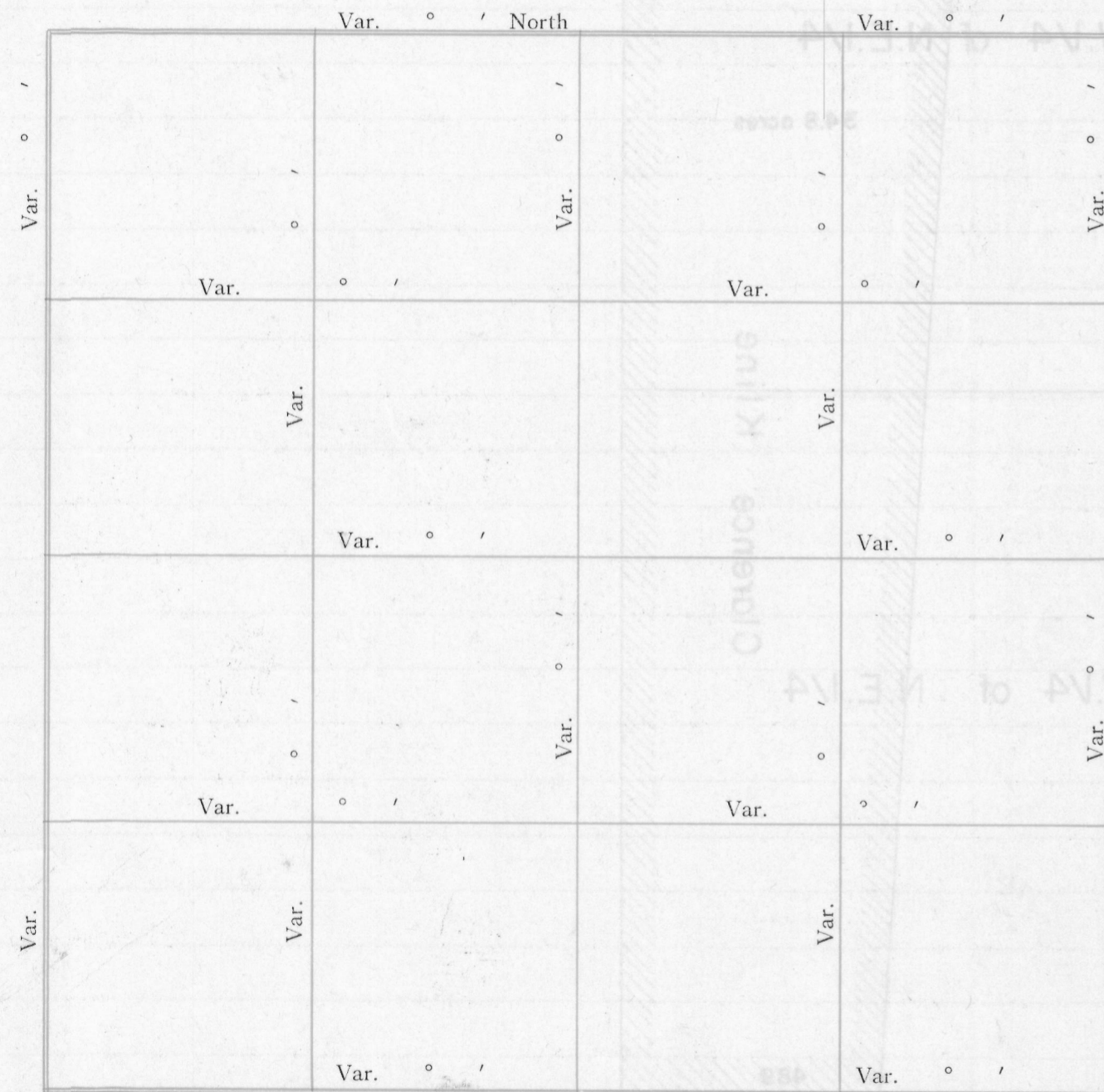
OF SECTION, QUARTER SECTION AND QUARTER QUARTER SECTION CORNERS

Township 3, North of Range 2 W of 4 Principal Meridian as presented by the courses and distances on the following plat, and annexed field-notes of survey:

Established the center of the section at the point of intersection of STRAIGHT quarter lines.

Established all quarter-quarter corners upon the section boundary at proportional distances between known section and quarter section corners, according to the original field-notes of the Government survey.

Established all lost corners at proportionate distances between known corners, according to the original field notes of the Government survey.



Plat of Section 24, Township 3 North, Range 2 W of 4 Principal Meridian Scale 80 chains to 6 inches. The figures in red ink are the lengths of the lines as stated in the field-notes of the Government survey.

Declination of the Magnetic Meridian from the True Meridian.....

Surveyed and sub-divided March 24 21 A. D. 1903, in accordance with the State Laws and Instructions of the Commissioner of the General Land office, and recorded on pages ..... of Register in the County Clerk's office.

Witness my hand this 25 day of May A. D. 1903

Henry D. Ralph jr. SURVEYOR.

(See Reverse side Hereof)

Form 1742 H. C. MILLER CO., MILWAUKEE

GOVERNMENT CORNERS	Bearing Trees	In. Dia.	Courses they bear	Links Distant	Bearing Trees	In. Dia.	Courses they bear	Links Distant	Bearing Trees	In. Dia.	Courses they bear	Links Distant	Bearing Trees	In. Dia.	Courses they bear	Links Distant
1. N. W. Sec. Cor. identified,																
2. N. E. Sec. Cor. identified,																
3. S. E. Sec. Cor. identified,																
4. S. W. Sec. Cor. identified,																
5. N. 1/4 Sec. Cor. identified,																
6. E. 1/4 Sec. Cor. identified,																
7. S. 1/4 Sec. Cor. identified,																
8. W. 1/4 Sec. Cor. identified,																
Subdivision Corners																
1. Center 1/4 Sec. Cor.																
2. North 1/4-1/4s N. W. qr.,																
3. East 1/4-1/4s N. W. qr.,																
4. South 1/4-1/4s N. W. qr.,																
5. West 1/4-1/4s N. W. qr.,																
6. Center 1/4-1/4s N. W. qr.,																
7. North 1/4-1/4s N. E. qr.,																
8. East 1/4-1/4s N. E. qr.,																
9. South 1/4-1/4s N. E. qr.,																
10. Center 1/4-1/4s N. E. qr.,																
11. East 1/4-1/4s S. E. qr.,																
12. South 1/4-1/4s S. E. qr.,																
13. West 1/4-1/4s S. E. qr.,																
14. Center 1/4-1/4s S. E. qr.,																
15. South 1/4-1/4s S. W. qr.,																
16. West 1/4-1/4s S. W. qr.,																
17. Center 1/4-1/4s S. W. qr.,																

## NAMES OF SWORN ASSISTANTS

CHAINMEN	FLAGMEN	AXMEN
Archie Wolf Clarence Kline	Harry Dunn	Wm. Dunn